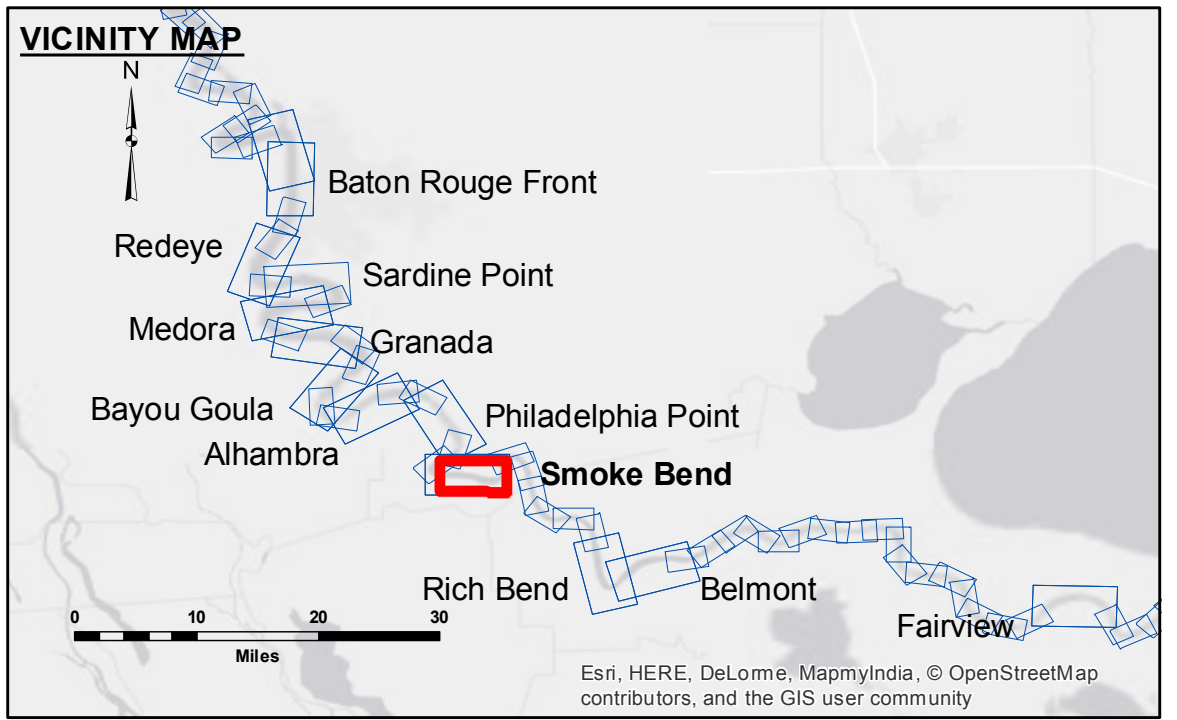


DISCLAIMER
 The information depicted on this map represents the results of a survey conducted by the U.S. Army Corps of Engineers. The user is responsible for the accuracy, completeness, reliability, usability or suitability for any particular purpose of the information. The user is responsible for the results of the application of the data for other than its intended purpose. The information depicted on this map represents the results of a survey conducted by the U.S. Army Corps of Engineers. The user is responsible for the accuracy, completeness, reliability, usability or suitability for any particular purpose of the information. The user is responsible for the results of the application of the data for other than its intended purpose. The information depicted on this map represents the results of a survey conducted by the U.S. Army Corps of Engineers. The user is responsible for the accuracy, completeness, reliability, usability or suitability for any particular purpose of the information. The user is responsible for the results of the application of the data for other than its intended purpose.

U.S. ARMY CORPS OF ENGINEERS NEW ORLEANS DISTRICT	
Submitted:	Surveyed By: DS/PS
Recommended: Chief Survey Section	Plotted By: BD
Approved: Chief Waterways Maintenance Section	Checked By: AC

**MISSISSIPPI RIVER - B.R. TO GULF
 SMOKE BEND RECON
 MR_22_SMB_20170328_CS
 28 March 2017**



LEGEND		0' and above	
--- Federal Navigation Channel	○ Cable Area	0' to -5'	
— Federal Navigation Center Line	□ Placement Area	-5' to -10'	
— As-built Pipeline/Cable	□ Anchorage Area	-10' to -20'	
..... Unconfirmed Pipeline/Cable	⊗ Obstruction Point	-20' to -30'	
— Project Depth Contour	★ Beacon, General	-30' to -35'	
	◆ Red Navigation Buoy	-35' to -40'	
	◆ Wrecks-Submerged	-40' to 45'	
	◆ Green Navigation Buoy	-45' and below	
	□ Borrow Area		
	● Shoalest Sounding**		

LWRP: 1.4
 Gage Reading: BR:20.2 D:12.8 USED:12.5 NGVD
 Sea Conditions: CALM
 Vessel Name: M/V LAFOURCHE
 Survey Type: CONDITION
 Sounding Frequency***: HIGH

NOTES:
 Horizontal Coordinate System:
 North American Datum of 1983 (NAD83), projected to the State Plane Coordinate System (SPCS), Louisiana South Zone. Distance units in U.S. Survey Feet.
 Vertical Datum:
 Soundings are shown in feet and indicate depths below Low Water Reference Plane 2007 (NGVD).
 Distances on the Mississippi River, above and below Head of Passes are shown at 1 mile intervals.
 The location of navigation aids are base on and provided by the U.S. Coast Guard and USACE crew.
 2010 Aerial Photography data source: NAIP, USDA-FSA-APFO Aerial Photography Field Office.
 Reference is N.O.A. Navigation Chart No. 11370.
 ** Shoalest Sounding per Quarter per Reach.
 *** High frequency (200 kHz) survey data represents the first signal return at a sounding location and will include suspended solids, known as "fluff", if present. Low frequency (20 kHz) survey data normally penetrates through this "fluff" layer to depict elevations of consolidated bottom material. Low frequency accuracies may vary depending on channel conditions and bathymeter settings.

**Sheet Reference Number
 22 of 97**

Revision Number:
 3.13-20160811