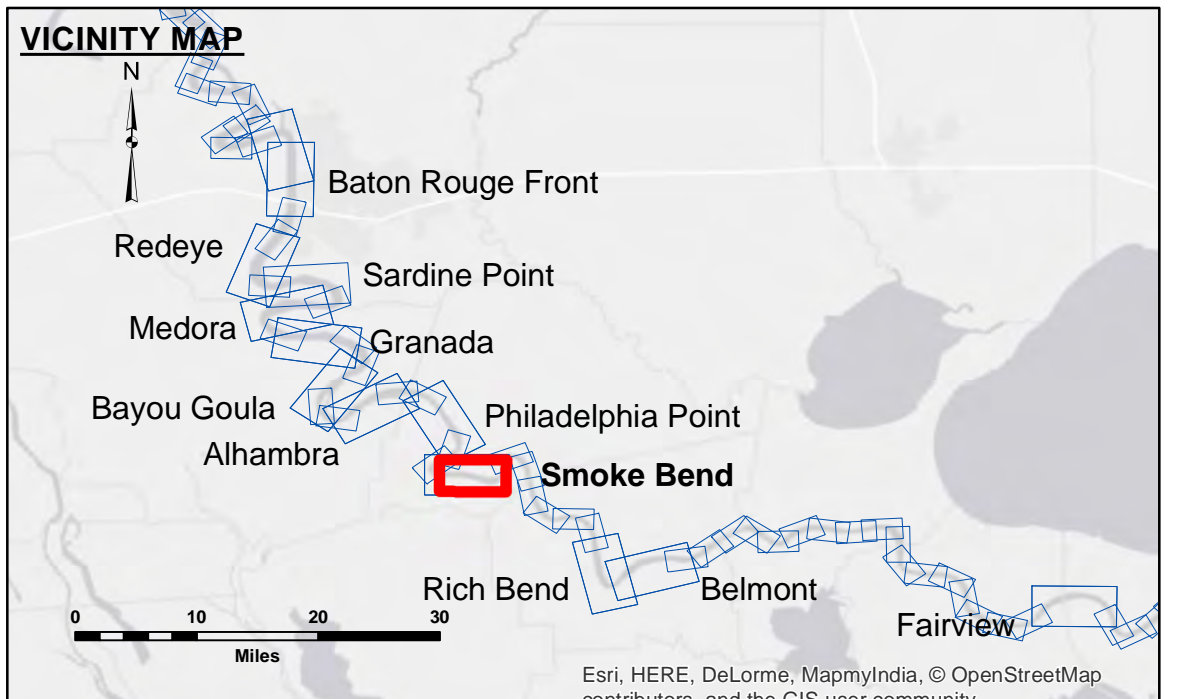


DISCLAIMER
 The information depicted on this map represents the results of a survey conducted by the U.S. Army Corps of Engineers. The user is responsible for the accuracy, completeness, and reliability of the data. The user is responsible for the results of the application of the data for other than its intended purpose. Data Constants: Hydrographic survey data is subject to change due to several factors including but not limited to changing hydrographic conditions which develop after the date of the survey. The user is responsible for the accuracy of the data. The user is responsible for the results of the application of the data for other than its intended purpose. The user is responsible for the results of the application of the data for other than its intended purpose. The user is responsible for the results of the application of the data for other than its intended purpose.

| | | |
|--------------|--------------|-------|
| Submitted: | Surveyed By: | DS/PS |
| Recommended: | Plotted By: | BD |
| Approved: | Checked By: | AC |

U.S. ARMY CORPS OF ENGINEERS
 NEW ORLEANS DISTRICT

**MISSISSIPPI RIVER - B.R. TO GULF
 SMOKE BEND RECON
 MR_22_SMB_20170815_CS
 15 August 2017**



LEGEND

| | | | |
|----------------------------------|---------------------|-------------------------|----------------|
| --- Federal Navigation Channel | ○ Cable Area | □ Borrow Area | 0' and above |
| — Federal Navigation Center Line | □ Placement Area | ● Shoalest Sounding** | 0' to -5' |
| — As-built Pipeline/Cable | □ Anchorage Area | ★ Beacon, General | -5' to -10' |
| Unconfirmed Pipeline/Cable | ⊗ Obstruction Point | ◆ Red Navigation Buoy | -10' to -20' |
| — Project Depth Contour | ✈ Wrecks-Submerged | ◆ Green Navigation Buoy | -20' to -30' |
| | | | -30' to -35' |
| | | | -35' to -40' |
| | | | -40' to -45' |
| | | | -45' and below |

NOTES:

Horizontal Coordinate System:
 North American Datum of 1983 (NAD83), projected to the State Plane Coordinate System (SPCS), Louisiana South Zone. Distance units in U.S. Survey Feet.

Vertical Datum:
 Soundings are shown in feet and indicate depths below Low Water Reference Plane 2007 (NGVD).

Distances on the Mississippi River, above and below Head of Passes are shown at 1 mile intervals.

The location of navigation aids are base on and provided by the U.S. Coast Guard and USACE crew.
 2010 Aerial Photography data source: NAIP, USDA-FSA-APFO Aerial Photography Field Office.

Reference is N.O.A. Navigation Chart No. 11370.

** Shoalest Sounding per Quarter per Reach.

*** High frequency (200 kHz) survey data represents the first signal return at a sounding location and will include suspended solids, known as "fluff", if present. Low frequency (20 kHz) survey data normally penetrates through this "fluff" layer to depict elevations of consolidated bottom material. Low frequency accuracies may vary depending on channel conditions and fathometer settings.

LWRP: 1.4
 Gage Reading: BR:17.2 D:10.0 USED:10.0 NGVD
 Sea Conditions: CALM
 Vessel Name: LAFORCHE
 Survey Type: RCONDITION
 Sounding Frequency***: HIGH

0 500 1,000 1,500 2,000 2,500 Feet

**Sheet Reference Number
 22 of 97**