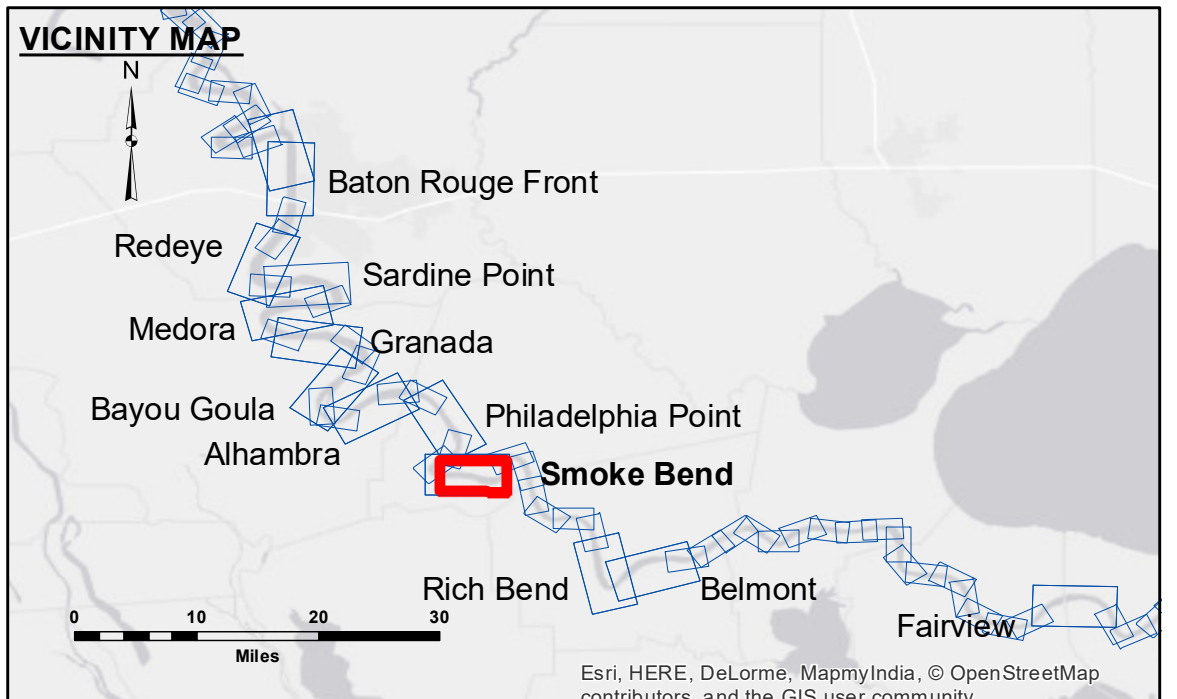


DISCLAIMER
 The United States Government furnishes these data and the recipient accepts and uses them with the express understanding that the Government makes no warranty, expressed or implied, concerning the accuracy, completeness, reliability, usability or suitability for any particular purpose of the data. The user is responsible for the accuracy, completeness, reliability, usability or suitability of the data for other than its intended purpose. These data are provided to the recipient under no liability whatsoever to any person by reason of any use made thereof. These data belong to the Government. Therefore, the recipient may not transfer, disseminate, or otherwise use these data to others without also transferring the disclaimer. The information depicted on this map represents the results of a hydrographic survey conducted on the date of the survey. The information is not intended to represent the general condition existing at that time. Product maintainers should not rely solely upon this information.

Submitted:	Surveyed By:
Recommended:	SPPS
Approved:	Plotted By:
Chief, Survey Section	BD
Chief, Waterways Maintenance Section	Checked By:
	AC

MISSISSIPPI RIVER - B.R. TO GULF
SMOKE BEND RECON
MR_22_SMB_20170823_CS
23 August 2017



LEGEND

--- Federal Navigation Channel	○ Cable Area	□ Borrow Area	■ 0' and above
— Federal Navigation Center Line	□ Placement Area	● Shoalest Sounding**	■ 0' to -5'
— As-built Pipeline/Cable	□ Anchorage Area	★ Beacon, General	■ -5' to -10'
..... Unconfirmed Pipeline/Cable	⊗ Obstruction Point	◆ Red Navigation Buoy	■ -10' to -20'
— Project Depth Contour	⚓ Wrecks-Submerged	◆ Green Navigation Buoy	■ -20' to -30'
			■ -30' to -35'
			■ -35' to -40'
			■ -40' to 45'
			■ -45' and below

NOTES:

Horizontal Coordinate System:
 North American Datum of 1983 (NAD83), projected to the State Plane Coordinate System (SPCS), Louisiana South Zone. Distance units in U.S. Survey Feet.

Vertical Datum:
 Soundings are shown in feet and indicate depths below Low Water Reference Plane 2007 (NGVD).

Distances on the Mississippi River, above and below Head of Passes are shown at 1 mile intervals.

The location of navigation aids are based on and provided by the U.S. Coast Guard and USACE crew.

2010 Aerial Photography data source: NAIP, USDA-FSA-APFO Aerial Photography Field Office.

Reference is N.O.A.A. Navigation Chart No. 11370.

** Shoalest Sounding per Quarter per Reach.

*** High frequency (200 kHz) survey data represents the first signal return at a sounding location and will include suspended solids, known as "fluff", if present. Low frequency (20 kHz) survey data normally penetrates through this "fluff" layer to depict elevations of consolidated bottom material. Low frequency accuracies may vary depending on channel conditions and fathometer settings.

LWRP: 1.4
 Gage Reading: BR:16.0 D:9.28 USED: 9.2 NGVD
 Sea Conditions: CALM
 Vessel Name: M/V LAFOURCHE
 Survey Type: CONDITION
 Sounding Frequency***: HIGH

0 500 1,000 1,500 2,000 2,500 Feet

Sheet Reference Number
22 of 97