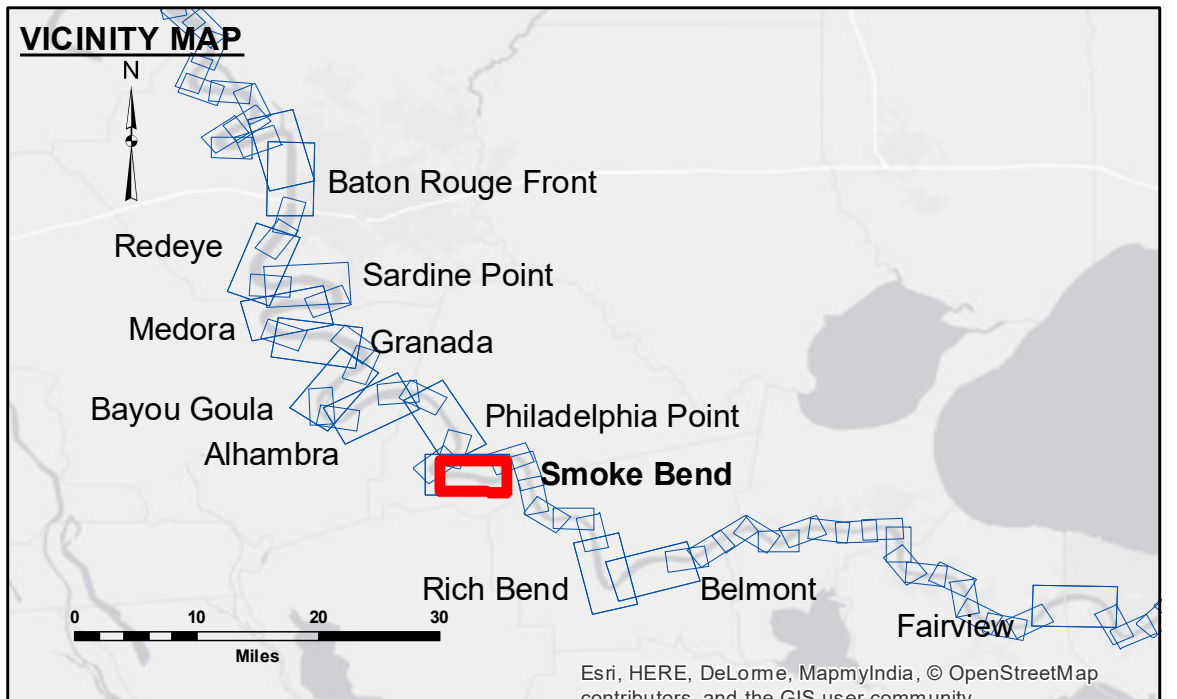


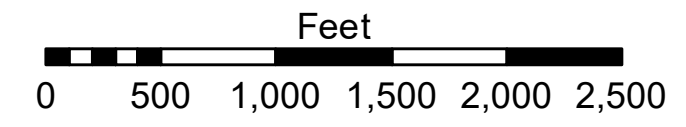
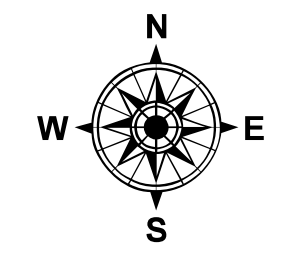
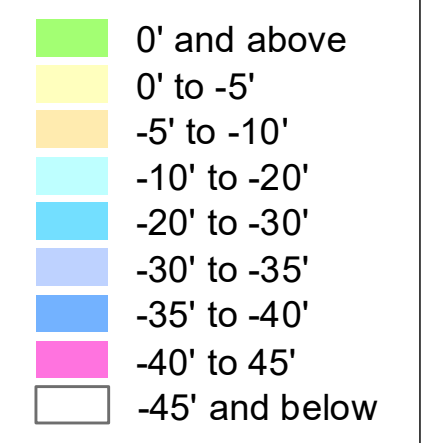
DISCLAIMER: The data represented on this map represents the results of a specific US Army Corps of Engineers survey. The data is only valid for its intended use, and accuracy is not guaranteed for other purposes. The user is responsible for the results of any application of the data for other than its intended purpose. The information depicted on this map represents the results of a specific US Army Corps of Engineers survey. The data is only valid for its intended use, and accuracy is not guaranteed for other purposes. The user is responsible for the results of any application of the data for other than its intended purpose.

Submitted:	Surveyed By:	JHPS
Recommended:	Plotted By:	BD
Approved:	Checked By:	AC

**MISSISSIPPI RIVER - B.R. TO GULF
SMOKE BEND RECON
MR_22_SMB_20181016_CS
16 October 2018**



LEGEND	
--- Federal Navigation Channel	● Cable Area
— Federal Navigation Center Line	■ Placement Area
— As-built Pipeline/Cable	□ Anchorage Area
..... Unconfirmed Pipeline/Cable	⊗ Obstruction Point
— Project Depth Contour	✈ Wrecks-Submerged
□ Borrow Area	★ Beacon, General
● Shoalest Sounding**	◆ Red Navigation Buoy
★ Beacon, General	◆ Green Navigation Buoy



LWRP: 1.4
Gage Reading: BR:26.62 D:17.67 USED:17.7 NGVD
Sea Conditions: CALM
Vessel Name: M/V LAFOURCHE
Survey Type: CONDITION
Sounding Frequency***: HIGH

NOTES:
Horizontal Coordinate System: North American Datum of 1983 (NAD83), projected to the State Plane Coordinate System (SPCS), Louisiana South Zone. Distance units in U.S. Survey Feet.
Vertical Datum: Soundings are shown in feet and indicate depths below Low Water Reference Plane 2007 (NGVD).
Distances on the Mississippi River, above and below Head of Passes are shown at 1 mile intervals.
The location of navigation aids are based on and provided by the U.S. Coast Guard and USACE crew.
2015 Aerial Photography data source: NAIP, USDA-FSA-APFO Aerial Photography Field Office.
Reference is N.O.A. Navigation Chart No. 11370.
** Shoalest Sounding per Quarter per Reach.
*** High frequency (200 kHz) survey data represents the first signal return at a sounding location and will include suspended solids, known as "fluff", if present. Low frequency (20 kHz) survey data normally penetrates through this "fluff" layer to depict elevations of consolidated bottom material. Low frequency accuracies may vary depending on channel conditions and fathometer settings.

**Sheet Reference Number
22 of 97**