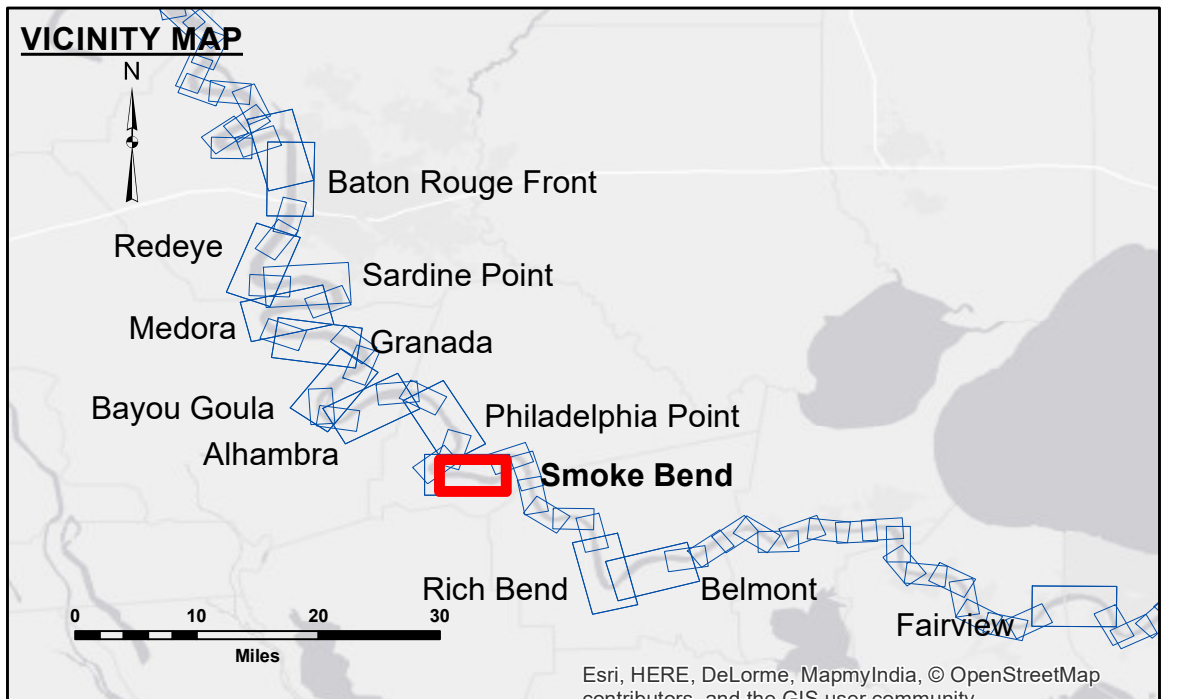


DISCLAIMER
 Access Conditions: The United States Government furnishes these data and the recipient accepts and uses them with the express understanding that they are not intended for navigation purposes. The user is responsible for the accuracy, completeness, readability, usability or suitability for any particular purpose of the information provided. The user is responsible for the results of the application of the data for other than its intended purpose.
 Data Constraints: Hydrographic survey data is subject to change rapidly due to several factors including but not limited to dredging operations, channel shifts, and changes in bathymetry. The Army Corps of Engineers accepts no responsibility for changes in the hydrographic conditions when developed after the date of the survey. The information depicted on this map represents the results of a survey and is not intended to be used for navigation purposes. The information is provided for informational purposes only and should not be used for navigation purposes. The information is provided for informational purposes only and should not be used for navigation purposes.

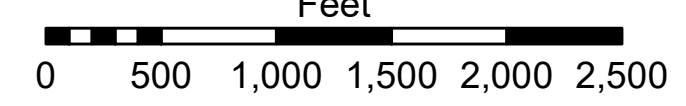
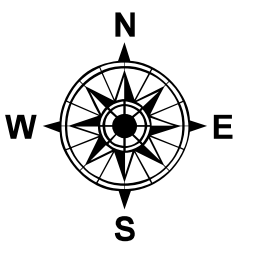
Submitted:	Surveyed By:
Recommended:	JH/PS
Approved:	Plotted By:
Chief, Survey Section	BD
Chief, Waterways Maintenance Section	Checked By:
	AC

**MISSISSIPPI RIVER - B.R. TO GULF
 SMOKE BEND RECON
 MR_22_SMB_20181031_CS
 31 October 2018**



LEGEND

— Federal Navigation Channel	○ Cable Area	□ Borrow Area	■ 0' and above
— Federal Navigation Center Line	□ Placement Area	● Shoalest Sounding**	■ 0' to -5'
— As-built Pipeline/Cable	□ Anchorage Area	★ Beacon, General	■ -5' to -10'
..... Unconfirmed Pipeline/Cable	⊗ Obstruction Point	◆ Red Navigation Buoy	■ -10' to -20'
— Project Depth Contour	⚓ Wrecks-Submerged	◆ Green Navigation Buoy	■ -20' to -30'
			■ -30' to -35'
			■ -35' to -40'
			■ -40' to -45'
			■ -45' and below



LWRP: 1.4
 Gage Reading: BR:29.62 D:20.39 USED:20.3 NGVD
 Sea Conditions: CALM
 Vessel Name: M/V LAFOURCHE
 Survey Type: CONDITION
 Sounding Frequency***: HIGH

NOTES:
 Horizontal Coordinate System:
 North American Datum of 1983 (NAD83), projected to the State Plane Coordinate System (SPCS), Louisiana South Zone. Distance units in U.S. Survey Feet.
 Vertical Datum:
 Soundings are shown in feet and indicate depths below Low Water Reference Plane 2007 (NGVD).
 Distances on the Mississippi River, above and below Head of Passes are shown at 1 mile intervals.
 The location of navigation aids are base on and provided by the U.S. Coast Guard and USACE crew.
 2015 Aerial Photography data source: NAIP, USDA-FSA-APFO Aerial Photography Field Office.
 Reference is N.O.A. Navigation Chart No. 11370.
 ** Shoalest Sounding per Quarter per Reach.
 *** High frequency (200 kHz) survey data represents the first signal return at a sounding location and will include suspended solids, known as "fluff", if present. Low frequency (20 kHz) survey data normally penetrates through this "fluff" layer to depict elevations of consolidated bottom material. Low frequency accuracies may vary depending on channel conditions and bathymeter settings.

**Sheet Reference Number
 22 of 97**