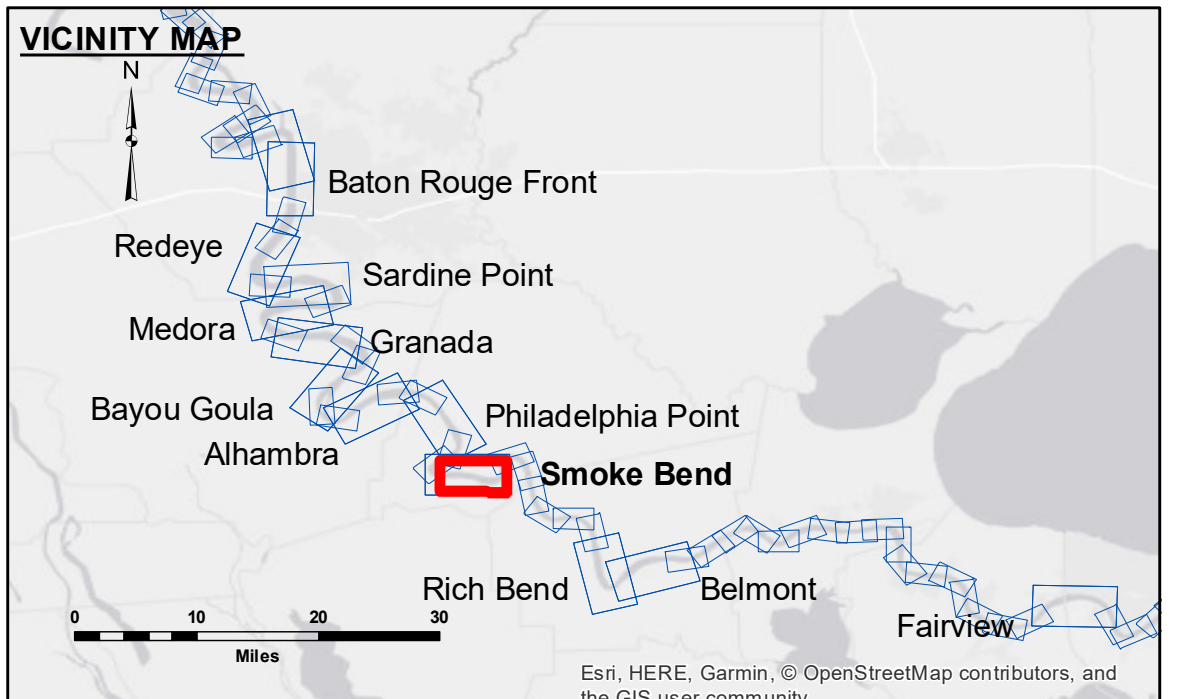


DISCLAIMER: The data represented on this map represents the results of a specific US Army Corps of Engineers survey. The user is responsible for the results of the application of the data for other than its intended purpose. The user is responsible for the results of the application of the data for other than its intended purpose. The user is responsible for the results of the application of the data for other than its intended purpose. The user is responsible for the results of the application of the data for other than its intended purpose.

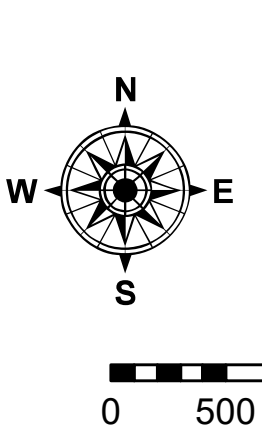
Submitted:	Surveyed By: JH/SPS
Recommended: Chief Survey Section	Plotted By: BD
Approved: Chief Waterways Maintenance Section	Checked By: AC

**MISSISSIPPI RIVER - B.R. TO GULF
SMOKE BEND RECON
MR_22_SMB_20190605_CS
05 June 2019**

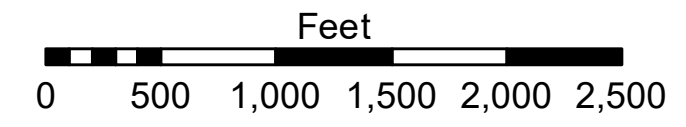


LEGEND	
--- Federal Navigation Channel	○ Cable Area
— Federal Navigation Center Line	□ Placement Area
— As-built Pipeline/Cable	□ Anchorage Area
..... Unconfirmed Pipeline/Cable	⊗ Obstruction Point
— Project Depth Contour	✈ Wrecks-Submerged
□ Borrow Area	★ Beacon, General
● Shoalest Sounding**	♦ Red Navigation Buoy
★ Beacon, General	♦ Green Navigation Buoy

0' and above	Green
0' to -5'	Yellow
-5' to -10'	Orange
-10' to -20'	Light Blue
-20' to -30'	Blue
-30' to -35'	Dark Blue
-35' to -40'	Light Purple
-40' to -45'	Dark Purple
-45' and below	White



LWRP: 1.4
Gage Reading: BR:43.1 D:31.1 USED:31.0 NGVD
Sea Conditions: CALM
Vessel Name: M/V LAFOURCHE
Survey Type: CONDITION
Sounding Frequency***: HIGH



NOTES:
Horizontal Coordinate System: North American Datum of 1983 (NAD83), projected to the State Plane Coordinate System (SPCS), Louisiana South Zone. Distance units in U.S. Survey Feet.
Vertical Datum: Soundings are shown in feet and indicate depths below Low Water Reference Plane 2007 (NGVD).
Distances on the Mississippi River, above and below Head of Passes are shown at 1 mile intervals.
The location of navigation aids are base on and provided by the U.S. Coast Guard and USACE crew.
2015 Aerial Photography data source: NAIP, USDA-FSA-APFO Aerial Photography Field Office.
Reference is N.O.A.A. Navigation Chart No. 11370.
** Shoalest Sounding per Quarter per Reach.
*** High frequency (200 kHz) survey data represents the first signal return at a sounding location and will include suspended solids, known as "fluff", if present. Low frequency (20 kHz) survey data normally penetrates through this "fluff" layer to depict elevations of consolidated bottom material. Low frequency accuracies may vary depending on channel conditions and fathometer settings.

**Sheet Reference Number
22 of 97**

Revision Number: 3.13-20160811