

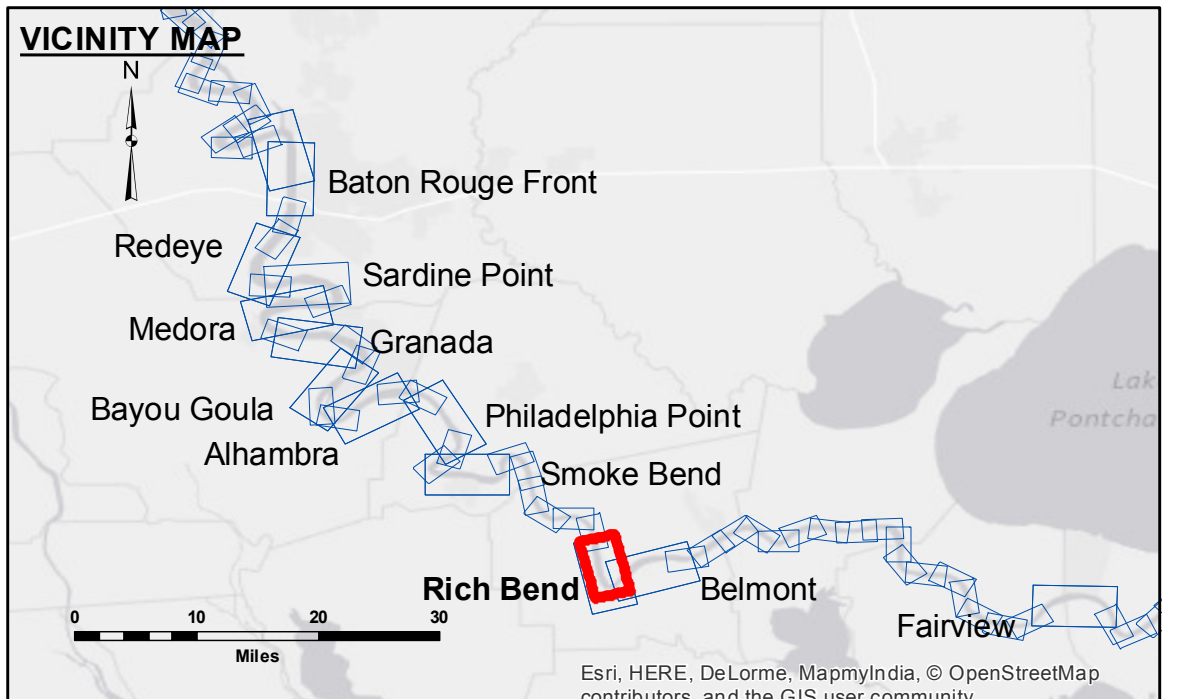
Access/Availability: The United States Government furnishes this data and the recipient agrees and uses them with the express understanding that the data is not to be used for any purpose other than that for which it was specifically prepared. The user is responsible for the results, accuracy, reliability, usability or suitability for any particular purpose of the data. The user shall not be held liable for any damage or injury resulting from the use of this data. The user shall not be held liable for any damage or injury resulting from the use of this data.

Disclaimer: The information depicted on this map represents the results of a survey conducted by the United States Army Corps of Engineers. The Corps of Engineers makes no warranty, expressed or implied, regarding the accuracy, reliability, or completeness of the information. The user is responsible for the results of any use of this information. The user shall not be held liable for any damage or injury resulting from the use of this information.

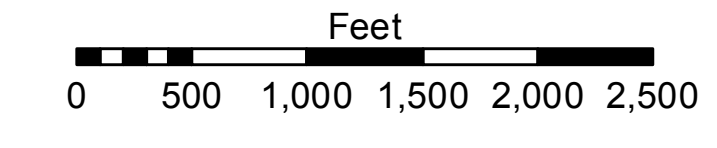
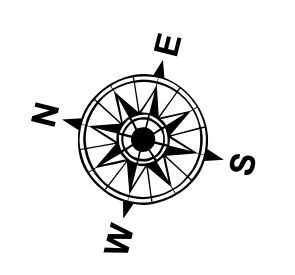
Submitted:		Recommended:		Approved:	
SPPM		BTD		MSK	
Surveyed By:		Plotted By:		Checked By:	
SPPM		BTD		MSK	

MISSISSIPPI RIVER - B.R. TO GULF RICH BEND RECON
MR_29_RIB_20160205
 05 February 2016

Sheet Reference Number
29 of 97



LEGEND			
	Federal Navigation Channel		0' and above
	Federal Navigation Center Line		0' to -5'
	As-built Pipeline/Cable		-5' to -10'
	Unconfirmed Pipeline/Cable		-10' to -20'
	Project Depth Contour		-20' to -30'
	Cable Area		-30' to -35'
	Placement Area		-35' to -40'
	Borrow Area		-40' to 45'
	Shoalest Sounding**		-45' and below
	Beacon, General		
	Red Navigation Buoy		
	Green Navigation Buoy		
	Anchorage Area		
	Obstruction Point		
	Wrecks-Submerged		



LWRP: 1.3
 Gage Reading: D:23.99 R:18.48 USED:21.5 NGVD
 Sea Conditions: CHOPPY
 Vessel Name: OB-167
 Survey Type: CONDITION
 Sounding Frequency***: HIGH

NOTES:

Horizontal Coordinate System:
 North American Datum of 1983 (NAD83), projected to the State Plane Coordinate System (SPCS), Louisiana South Zone. Distance units in U.S. Survey Feet.

Vertical Datum:
 Soundings are shown in feet and indicate depths below Low Water Reference Plane 2007 (NGVD).

Distances on the Mississippi River, above and below Head of Passes are shown at 1 mile intervals.

The location of navigation aids are based on and provided by the U.S. Coast Guard and USACE crew.

2010 Aerial Photography data source: NAIP, USDA-FSA-APFO Aerial Photography Field Office.

Reference is N.O.A.A. Navigation Chart No. 11370.

** Shoalest Sounding per Quarter per Reach.

*** High frequency (200 kHz) survey data represents the first signal return at a sounding location and will include suspended solids, known as "fluff", if present. Low frequency (20 kHz) survey data normally penetrates through this "fluff" layer to depict elevations of consolidated bottom material. Low frequency accuracies may vary depending on channel conditions and bathymeter settings.