

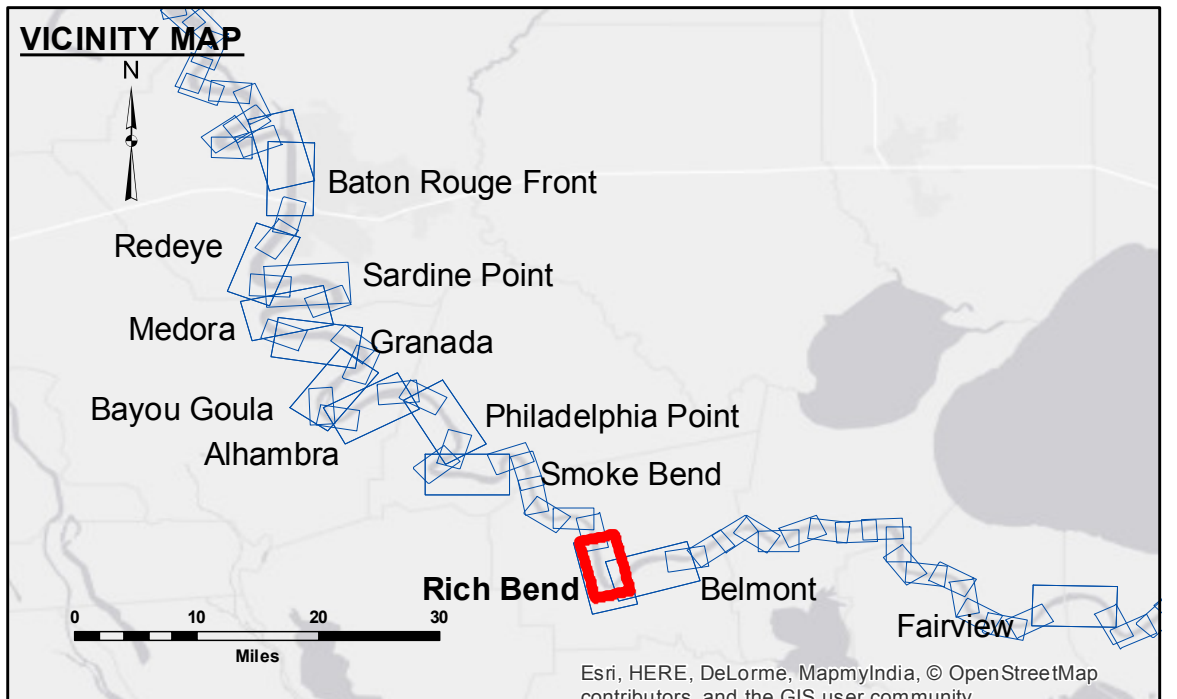
US Army Corps of Engineers
District: CEMVN

DISCLAIMER: The data represents the results of data collection processing for a specific US Army Corps of Engineers project. The data is only valid for its intended use, and accuracy is not guaranteed. The user is responsible for the results. The application of the data for other than its intended purpose is not recommended. Hydrographic survey data is subject to change due to several factors including but not limited to dredging, channel migration, and changes in bathymetry. The US Army Corps of Engineers does not assume any liability for changes in the hydrographic conditions when developed after the date of the survey. The information depicted on this map represents the results of a survey and should not be used for navigation. The Corps of Engineers is not responsible for any damage or loss resulting from the use of this information. Product maintainers should not rely solely on this information.

Submitted:	Chart Survey Section
Recommended:	Chart Survey Section
Approved:	Chart, Waterways Maintenance Section
Surveyed By:	DR, JA
Plotted By:	BTJ
Checked By:	MSK

MISSISSIPPI RIVER - B.R. TO GULF
RICH BEND RECON
MR_29_RIB_20160323
23 March 2016

Sheet Reference Number
29 of 97



LEGEND

--- Federal Navigation Channel	● Cable Area	□ Borrow Area	■ 0' and above
— Federal Navigation Center Line	□ Placement Area	● Shoalest Sounding**	■ 0' to -5'
— As-built Pipeline/Cable	□ Anchorage Area	☆ Beacon, General	■ -5' to -10'
..... Unconfirmed Pipeline/Cable	⊗ Obstruction Point	◆ Red Navigation Buoy	■ -10' to -20'
— Project Depth Contour	⚓ Wrecks-Submerged	◆ Green Navigation Buoy	■ -20' to -30'
			■ -30' to -35'
			■ -35' to -40'
			■ -40' to -45'
			■ -45' and below

NOTES:

Horizontal Coordinate System:
North American Datum of 1983 (NAD83), projected to the State Plane Coordinate System (SPCS), Louisiana South Zone. Distance units in U.S. Survey Feet.

Vertical Datum:
Soundings are shown in feet and indicate depths below Low Water Reference Plane 2007 (NGVD).

Distances on the Mississippi River, above and below Head of Passes are shown at 1 mile intervals.

The location of navigation aids are based on and provided by the U.S. Coast Guard and USACE crew.
2010 Aerial Photography data source: NAIP, USDA-FSA-APFO Aerial Photography Field Office.

Reference is N.O.A. Navigation Chart No. 11370.

** Shoalest Sounding per Quarter per Reach.

*** High frequency (200 kHz) survey data represents the first signal return at a sounding location and will include suspended solids, known as "fluff", if present. Low frequency (20 kHz) survey data normally penetrates through this "fluff" layer to depict elevations of consolidated bottom material. Low frequency accuracies may vary depending on channel conditions and fathometer settings.

LWRP: 1.3
Gage Reading: D:27.7 R:21.3 USED:24.80 NGVD
Sea Conditions: CALM
Vessel Name: OB-167
Survey Type: CONDITION
Sounding Frequency***: HIGH

Feet
0 500 1,000 1,500 2,000 2,500