

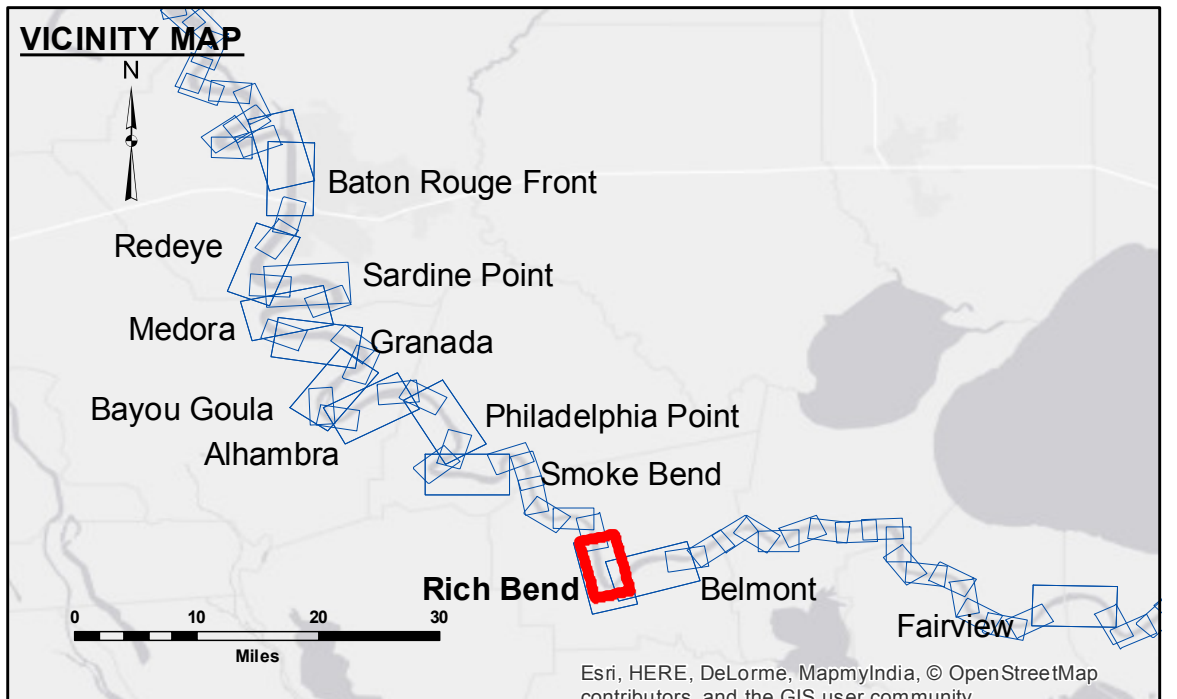


ACCESS NOTES:
 Access Restrictions: The United States Government furnishes these data and the recipient accepts and uses them with the express understanding that they are not to be distributed, reproduced, or used for any purpose other than that for which they were provided. The user is responsible for the results of any use of the data for other than its intended purpose. The application of the data for other than its intended purpose is at the user's risk. The Corps of Engineers does not assume any liability for the use of the data for other than its intended purpose. The information depicted on the map represents the results of a survey conducted by the Corps of Engineers and is not to be used for any other purpose without the express approval of the Corps of Engineers. The information depicted on the map represents the results of a survey conducted by the Corps of Engineers and is not to be used for any other purpose without the express approval of the Corps of Engineers.

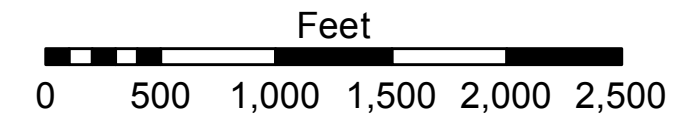
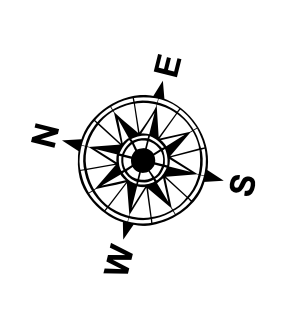
U.S. ARMY CORPS OF ENGINEERS NEW ORLEANS DISTRICT		
Submitted:	Surveyed By: DS/PS	Plotted By: AO
Recommended:	Checked By: ML	Checked By: ML
Approved:	Chief, Waterways Maintenance Section	

**MISSISSIPPI RIVER - B.R. TO GULF
 RICH BEND RECON
 MR_29_RIB_20160504
 04 May 2016**

**Sheet Reference Number
 29 of 97**



LEGEND	
Federal Navigation Channel	Cable Area
Federal Navigation Center Line	Placement Area
As-built Pipeline/Cable	Anchorage Area
Unconfirmed Pipeline/Cable	Obstruction Point
Project Depth Contour	Wrecks-Submerged
Borrow Area	Shoalest Sounding**
Beacon, General	Red Navigation Buoy
Green Navigation Buoy	Green Navigation Buoy



LWRP: 1.3
 Gage Reading: D:18.5R:14.1 USED:16.5 NGVD
 Sea Conditions: SMOOTH
 Vessel Name: LAFORCHE
 Survey Type: RECON
 Sounding Frequency***: HIGH

NOTES:
 Horizontal Coordinate System:
 North American Datum of 1983 (NAD83), projected to the State Plane Coordinate System (SPCS), Louisiana South Zone. Distance units in U.S. Survey Feet.
 Vertical Datum:
 Soundings are shown in feet and indicate depths below Low Water Reference Plane 2007 (NGVD).
 Distances on the Mississippi River, above and below Head of Passes are shown at 1 mile intervals.
 The location of navigation aids are base on and provided by the U.S. Coast Guard and USACE crew.
 2010 Aerial Photography data source: NAIP, USDA-FSA-APFO Aerial Photography Field Office.
 Reference is N.O.A. Navigation Chart No. 11370.
 ** Shoalest Sounding per Quarter per Reach.
 *** High frequency (200 kHz) survey data represents the first signal return at a sounding location and will include suspended solids, known as "fluff", if present. Low frequency (20 kHz) survey data normally penetrates through this "fluff" layer to depict elevations of consolidated bottom material. Low frequency accuracies may vary depending on channel conditions and fathometer settings.

Esri, HERE, DeLorme, MapmyIndia, © OpenStreetMap contributors, and the GIS user community