



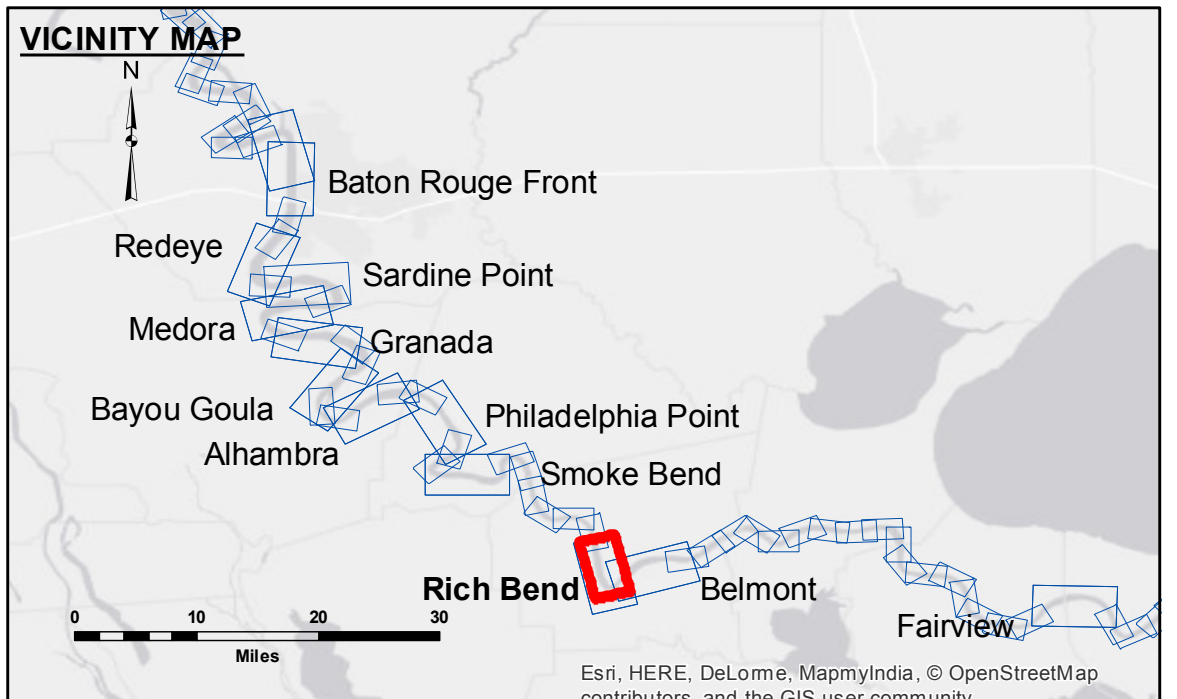
**ACCESS NOTES**  
 Access to this map is restricted to authorized personnel only. The information depicted on this map represents the results of a survey conducted by the U.S. Army Corps of Engineers and is not to be used for purposes other than those intended. The user is responsible for the accuracy, completeness, reliability, and suitability of the information for their intended use. The information depicted on this map represents the results of a survey conducted by the U.S. Army Corps of Engineers and is not to be used for purposes other than those intended. The user is responsible for the accuracy, completeness, reliability, and suitability of the information for their intended use. The information depicted on this map represents the results of a survey conducted by the U.S. Army Corps of Engineers and is not to be used for purposes other than those intended. The user is responsible for the accuracy, completeness, reliability, and suitability of the information for their intended use.

Submitted:	Chart Survey Section
Reviewed By:	BD
Checked By:	AC

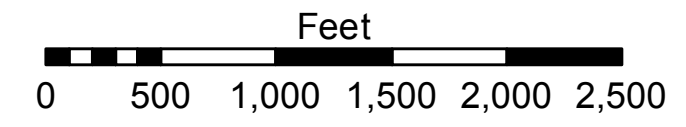
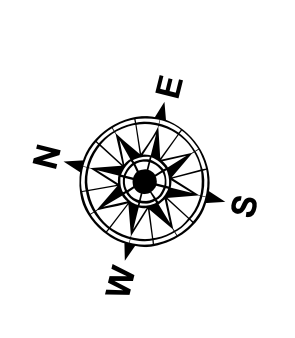
U.S. ARMY CORPS OF ENGINEERS  
 NEW ORLEANS DISTRICT

**MISSISSIPPI RIVER - B.R. TO GULF**  
**RICH BEND RECON**  
**MR\_29\_RIB\_20161003**  
**03 October 2016**

**Sheet Reference Number**  
**29 of 97**



LEGEND	
— Federal Navigation Channel	○ Cable Area
— Federal Navigation Center Line	□ Placement Area
— As-built Pipeline/Cable	□ Anchorage Area
⋯ Unconfirmed Pipeline/Cable	⊗ Obstruction Point
— Project Depth Contour	⚓ Wrecks-Submerged
□ Borrow Area	☆ Beacon, General
● Shoalest Sounding**	◆ Red Navigation Buoy
☆ Beacon, General	◆ Green Navigation Buoy
◆ Red Navigation Buoy	■ 0' and above
◆ Green Navigation Buoy	■ 0' to -5'
	■ -5' to -10'
	■ -10' to -20'
	■ -20' to -30'
	■ -30' to -35'
	■ -35' to -40'
	■ -40' to -45'
	■ -45' and below



LWRP: 1.3  
 Gage Reading: D:8.9 R:6.9 USED:8.0 NGVD  
 Sea Conditions: CALM  
 Vessel Name: M/V LAFOURCHE  
 Survey Type: CONDITION  
 Sounding Frequency\*\*\*: HIGH

**NOTES:**  
 Horizontal Coordinate System: North American Datum of 1983 (NAD83), projected to the State Plane Coordinate System (SPCS), Louisiana South Zone. Distance units in U.S. Survey Feet.  
 Vertical Datum: Soundings are shown in feet and indicate depths below Low Water Reference Plane 2007 (NGVD). Distances on the Mississippi River, above and below Head of Passes are shown at 1 mile intervals.  
 The location of navigation aids are based on and provided by the U.S. Coast Guard and USACE crew. 2010 Aerial Photography data source: NAIP, USDA-FSA-APFO Aerial Photography Field Office.  
 Reference is N.O.A. Navigation Chart No. 11370.  
 \*\* Shoalest Sounding per Quarter per Reach.  
 \*\*\* High frequency (200 kHz) survey data represents the first signal return at a sounding location and will include suspended solids, known as "fluff", if present. Low frequency (20 kHz) survey data normally penetrates through this "fluff" layer to depict elevations of consolidated bottom material. Low frequency accuracies may vary depending on channel conditions and fathometer settings.

Esri, HERE, DeLorme, MapmyIndia, © OpenStreetMap contributors, and the GIS user community