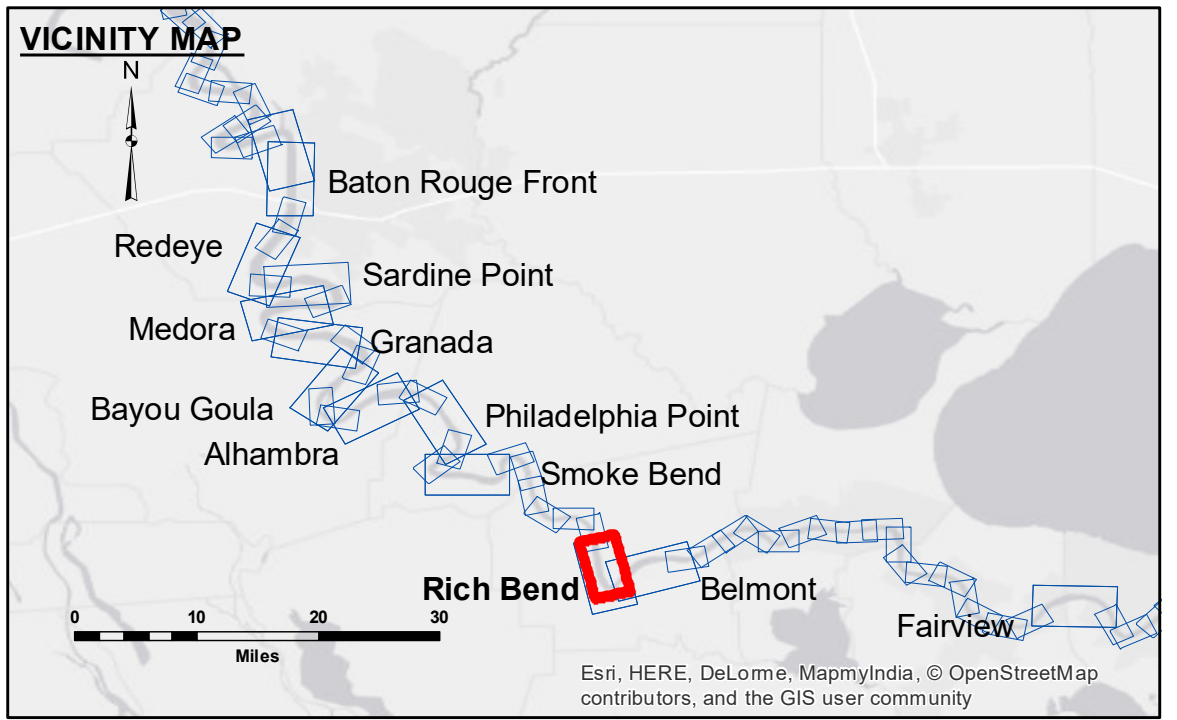


DISCLAIMER
 The information depicted on this map represents the results of a survey conducted by the U.S. Army Corps of Engineers. The user is responsible for the accuracy, reliability, and use of the data. The Corps of Engineers does not warrant the accuracy, reliability, or use of the data for any purpose other than that intended. The Corps of Engineers is not responsible for any damage or injury resulting from the use of the data. The Corps of Engineers is not responsible for any damage or injury resulting from the use of the data. The Corps of Engineers is not responsible for any damage or injury resulting from the use of the data.

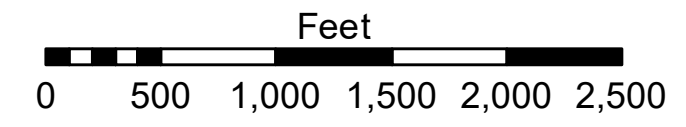
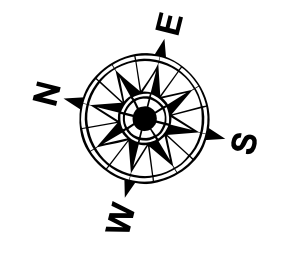
Submitted:	Surveyed By:	SPPS
Recommended:	Plotted By:	BD
Approved:	Checked By:	MS

U.S. ARMY CORPS OF ENGINEERS
 NEW ORLEANS DISTRICT

**MISSISSIPPI RIVER - B.R. TO GULF
 RICH BEND RECON
 MR_29_RIB_20171214_CS
 14 December 2017**



LEGEND		Borrow Area		Depth Contours	
--- Federal Navigation Channel	○ Cable Area	□ Borrow Area	■ 0' and above	■ -5' to -10'	■ -10' to -20'
— Federal Navigation Center Line	□ Placement Area	● Shoalest Sounding**	■ -5' to -10'	■ -10' to -20'	■ -20' to -30'
— As-built Pipeline/Cable	□ Anchorage Area	★ Beacon, General	■ -10' to -20'	■ -20' to -30'	■ -30' to -35'
..... Unconfirmed Pipeline/Cable	⊗ Obstruction Point	◆ Red Navigation Buoy	■ -20' to -30'	■ -30' to -35'	■ -35' to -40'
— Project Depth Contour	⚓ Wrecks-Submerged	◆ Green Navigation Buoy	■ -30' to -35'	■ -35' to -40'	■ -40' to 45'
			■ -35' to -40'	■ -40' to 45'	■ -45' and below



LWRP: 1.3
 Gage Reading: D:4.7 R:3.45 USED: 4.1 NGVD
 Sea Conditions: CHOP
 Vessel Name: OB-167
 Survey Type: CONDITION
 Sounding Frequency***: HIGH

NOTES:
 Horizontal Coordinate System:
 North American Datum of 1983 (NAD83), projected to the State Plane Coordinate System (SPCS), Louisiana South Zone. Distance units in U.S. Survey Feet.
 Vertical Datum:
 Soundings are shown in feet and indicate depths below Low Water Reference Plane 2007 (NGVD).
 Distances on the Mississippi River, above and below Head of Passes are shown at 1 mile intervals.
 The location of navigation aids are base on and provided by the U.S. Coast Guard and USACE crew.
 2010 Aerial Photography data source: NAIP, USDA-FSA-APFO Aerial Photography Field Office.
 Reference is N.O.A. Navigation Chart No. 11370.
 ** Shoalest Sounding per Quarter per Reach.
 *** High frequency (200 kHz) survey data represents the first signal return at a sounding location and will include suspended solids, known as "fluff", if present. Low frequency (20 kHz) survey data normally penetrates through this "fluff" layer to depict elevations of consolidated bottom material. Low frequency accuracies may vary depending on channel conditions and fathometer settings.

**Sheet Reference Number
 29 of 97**