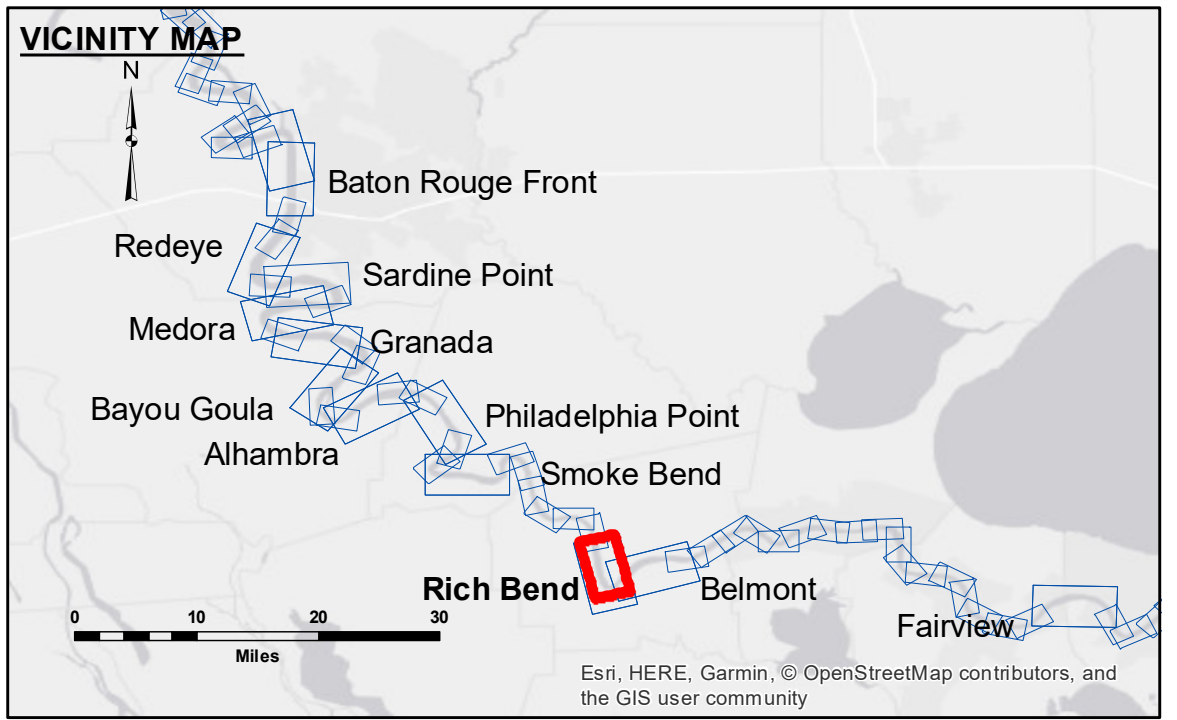




**DISTRIBUTION STATEMENT:** This data represents the results of data collection processing for a specific US Army Corps of Engineers project. It is not to be used for any other purpose than the one for which it was prepared. The user is responsible for the results of any application of this data for purposes other than those intended. The user is responsible for the results of any application of this data for purposes other than those intended. The user is responsible for the results of any application of this data for purposes other than those intended.

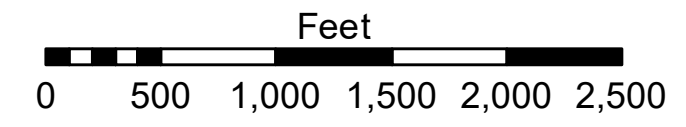
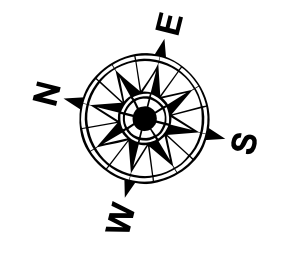
Submitted:	Surveyed By:	Plotted By:	Checked By:
	RYLANDHOSHMAN	AO	AO
Recommended:	Chart Survey Section		
Approved:	Chart, Waterways Maintenance Section		

**MISSISSIPPI RIVER - B.R. TO GULF RICH BEND RECON**  
MR\_29\_RIB\_20180410\_CS  
10 April 2018



**LEGEND**

--- Federal Navigation Channel	○ Cable Area	□ Borrow Area	■ 0' and above
— Federal Navigation Center Line	□ Placement Area	● Shoalest Sounding**	■ 0' to -5'
— As-built Pipeline/Cable	□ Anchorage Area	★ Beacon, General	■ -5' to -10'
..... Unconfirmed Pipeline/Cable	⊗ Obstruction Point	◆ Red Navigation Buoy	■ -10' to -20'
— Project Depth Contour	⚓ Wrecks-Submerged	◆ Green Navigation Buoy	■ -20' to -30'
			■ -30' to -35'
			■ -35' to -40'
			■ -40' to -45'
			■ -45' and below



LWRP: 1.3  
Gage Reading: D:26.3R:20.2 USED:23.5 NGVD  
Sea Conditions: CALM  
Vessel Name: M/v OB 189  
Survey Type: CONDITION  
Sounding Frequency\*\*\*: HIGH

**NOTES:**  
Horizontal Coordinate System: North American Datum of 1983 (NAD83), projected to the State Plane Coordinate System (SPCS), Louisiana South Zone. Distance units in U.S. Survey Feet.  
Vertical Datum: Soundings are shown in feet and indicate depths below Low Water Reference Plane 2007 (NGVD).  
Distances on the Mississippi River, above and below Head of Passes are shown at 1 mile intervals.  
The location of navigation aids are based on and provided by the U.S. Coast Guard and USACE crew.  
2010 Aerial Photography data source: NAIP, USDA-FSA-APFO Aerial Photography Field Office.  
Reference is N.O.A. Navigation Chart No. 11370.  
\*\* Shoalest Sounding per Quarter per Reach.  
\*\*\* High frequency (200 kHz) survey data represents the first signal return at a sounding location and will include suspended solids, known as "fluff", if present. Low frequency (20 kHz) survey data normally penetrates through this "fluff" layer to depict elevations of consolidated bottom material. Low frequency accuracies may vary depending on channel conditions and fathometer settings.

**Sheet Reference Number**  
29 of 97