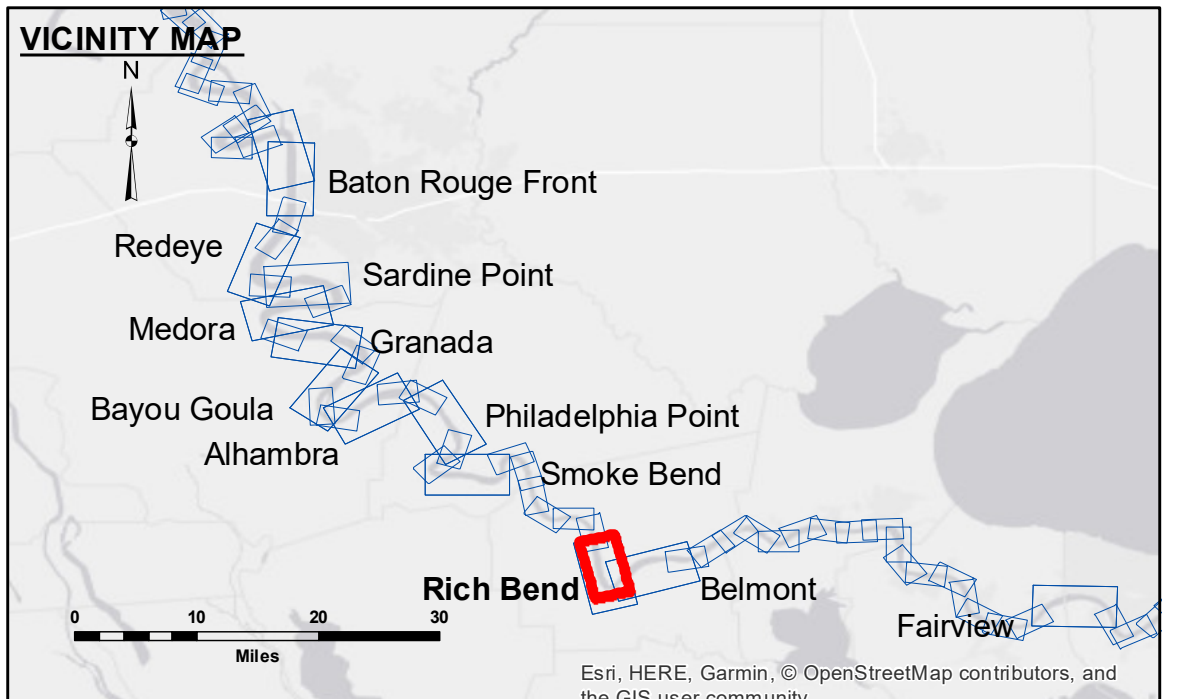


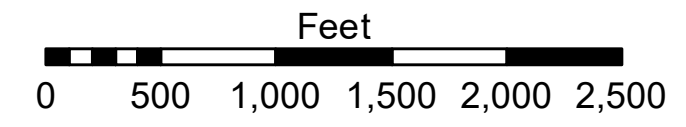
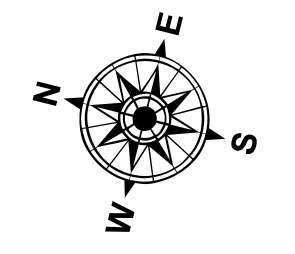
DISCLAIMER: The United States Government furnishes these data and the recipient accepts and uses them with the express understanding that the Government makes no warranty, expressed or implied, as to the accuracy, completeness, reliability, usability or suitability for any particular purpose of the information. The user is responsible for the results obtained from the application of the data for other than its intended purpose. Data Contained: Hydrographic survey data is subject to change due to several factors including but not limited to dredging, sedimentation, and other factors. The user is responsible for the accuracy of the data. The information depicted on this map represents the results of a survey conducted on the date of the survey. The information is not to be used for any purpose other than that for which it was collected. The user is responsible for the accuracy of the information. The information is not to be used for any purpose other than that for which it was collected. The user is responsible for the accuracy of the information.

Submitted:	Checked By:
Recommended:	Checked By:
Approved:	Checked By:

MISSISSIPPI RIVER - B.R. TO GULF RICH BEND RECON
MR_29_RIB_20181127_CS
27 November 2018



LEGEND		Borrow Area		Depth Contours	
--- Federal Navigation Channel	○ Cable Area	□ Borrow Area	■ 0' and above	■ 0' to -5'	■ -5' to -10'
— Federal Navigation Center Line	□ Placement Area	● Shoalest Sounding**	■ -10' to -20'	■ -20' to -30'	■ -30' to -35'
— As-built Pipeline/Cable	□ Anchorage Area	★ Beacon, General	■ -35' to -40'	■ -40' to -45'	■ -45' and below
..... Unconfirmed Pipeline/Cable	⊗ Obstruction Point	◆ Red Navigation Buoy			
— Project Depth Contour	⚓ Wrecks-Submerged	◆ Green Navigation Buoy			



LWRP: 1.9
 Gage Reading: BR:30.7D:21.3 USED:19.1 NGVD
 Sea Conditions: 1
 Vessel Name: LAFORUCHE
 Survey Type: CS
 Sounding Frequency***: HIGH

NOTES:
 Horizontal Coordinate System:
 North American Datum of 1983 (NAD83), projected to the State Plane Coordinate System (SPCS), Louisiana South Zone. Distance units in U.S. Survey Feet.
 Vertical Datum:
 Soundings are shown in feet and indicate depths below Low Water Reference Plane 2007 (NGVD).
 Distances on the Mississippi River, above and below Head of Passes are shown at 1 mile intervals.
 The location of navigation aids are base on and provided by the U.S. Coast Guard and USACE crew.
 2010 Aerial Photography data source: NAIP, USDA-FSA-APFO Aerial Photography Field Office.
 Reference is N.O.A. Navigation Chart No. 11370.
 ** Shoalest Sounding per Quarter per Reach.
 *** High frequency (200 kHz) survey data represents the first signal return at a sounding location and will include suspended solids, known as "fluff", if present. Low frequency (20 kHz) survey data normally penetrates through this "fluff" layer to depict elevations of consolidated bottom material. Low frequency accuracies may vary depending on channel conditions and fathometer settings.

Sheet Reference Number
29 of 97