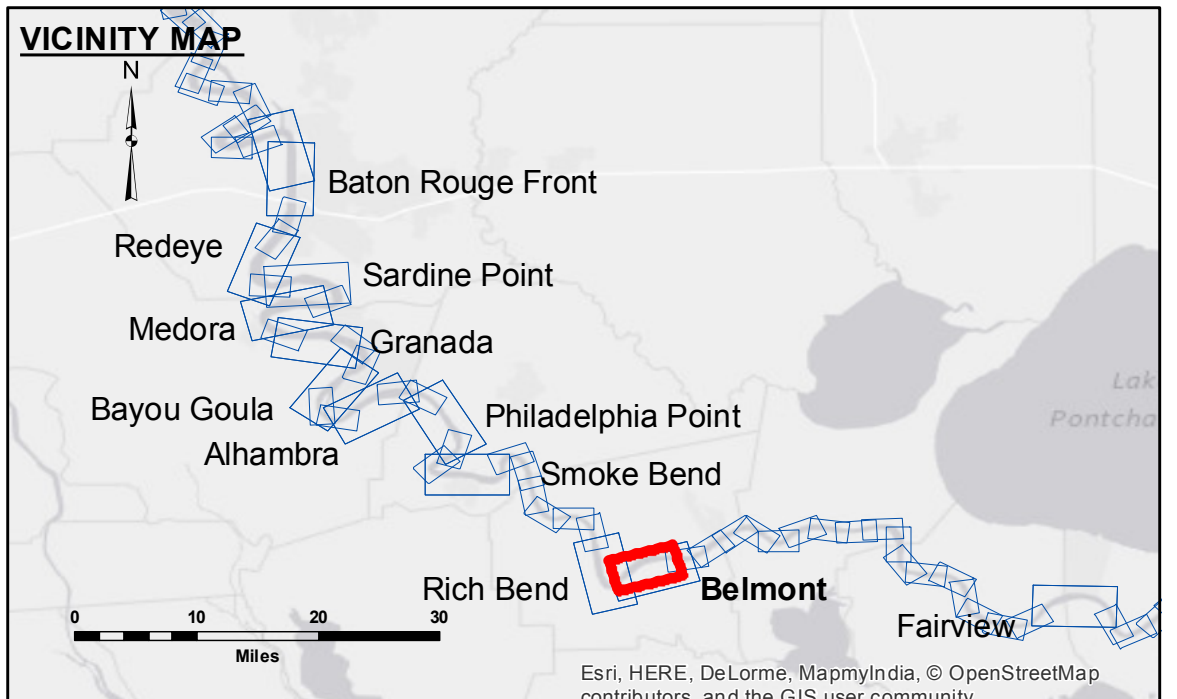


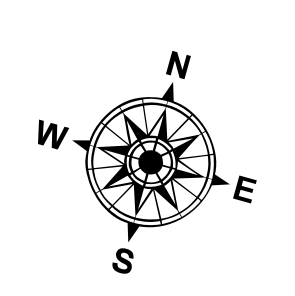
DISCLAIMER
The information depicted on this map represents the results of a survey conducted by the U.S. Army Corps of Engineers. The user is responsible for the accuracy, reliability, usability, or suitability for any particular purpose of the information. The user is responsible for the accuracy, reliability, usability, or suitability for any particular purpose of the information. The user is responsible for the accuracy, reliability, usability, or suitability for any particular purpose of the information.

U.S. ARMY CORPS OF ENGINEERS NEW ORLEANS DISTRICT	
Submitted:	Surveyed By: PS DS SP
Recommended:	Plotted By: BTD
Approved:	Checked By: MSK

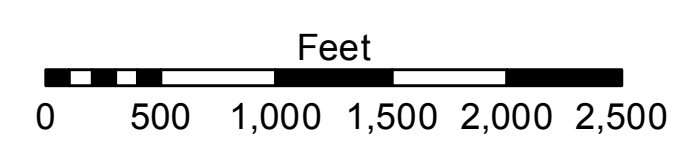
MISSISSIPPI RIVER - B.R. TO GULF
BELMONT RECON
MR_30_BEL_20151203
03 December 2015



LEGEND		
— Federal Navigation Channel	○ Cable Area	□ Borrow Area
— Federal Navigation Center Line	□ Placement Area	● Shoalest Sounding**
— As-built Pipeline/Cable	□ Anchorage Area	★ Beacon, General
..... Unconfirmed Pipeline/Cable	⊗ Obstruction Point	◆ Red Navigation Buoy
— Project Depth Contour	⚓ Wrecks-Submerged	◆ Green Navigation Buoy
		0' and above
		0' to -5'
		-5' to -10'
		-10' to -20'
		-20' to -30'
		-30' to -35'
		-35' to -40'
		-40' to 45'
		-45' and below



LWRP: 1.3
Gage Reading: D:16.39 R:11.13 USED:13.4 NGVD
Sea Conditions: CALM
Vessel Name: LAFOURCHE
Survey Type: CONDITION
Sounding Frequency***: HIGH



NOTES:
Horizontal Coordinate System: North American Datum of 1983 (NAD83), projected to the State Plane Coordinate System (SPCS), Louisiana South Zone. Distance units in U.S. Survey Feet.
Vertical Datum: Soundings are shown in feet and indicate depths below Low Water Reference Plane 2007 (NGVD). Distances on the Mississippi River, above and below Head of Passes are shown at 1 mile intervals.
The location of navigation aids are based on and provided by the U.S. Coast Guard and USACE crew. 2010 Aerial Photography data source: NAIP, USDA-FSA-APFO Aerial Photography Field Office.
Reference is N.O.A.A. Navigation Chart No. 11370.
** Shoalest Sounding per Quarter per Reach.
*** High frequency (200 kHz) survey data represents the first signal return at a sounding location and will include suspended solids, known as "fluff", if present. Low frequency (20 kHz) survey data normally penetrates through this "fluff" layer to depict elevations of consolidated bottom material. Low frequency accuracies may vary depending on channel conditions and bathymeter settings.

Sheet Reference Number
30 of 97