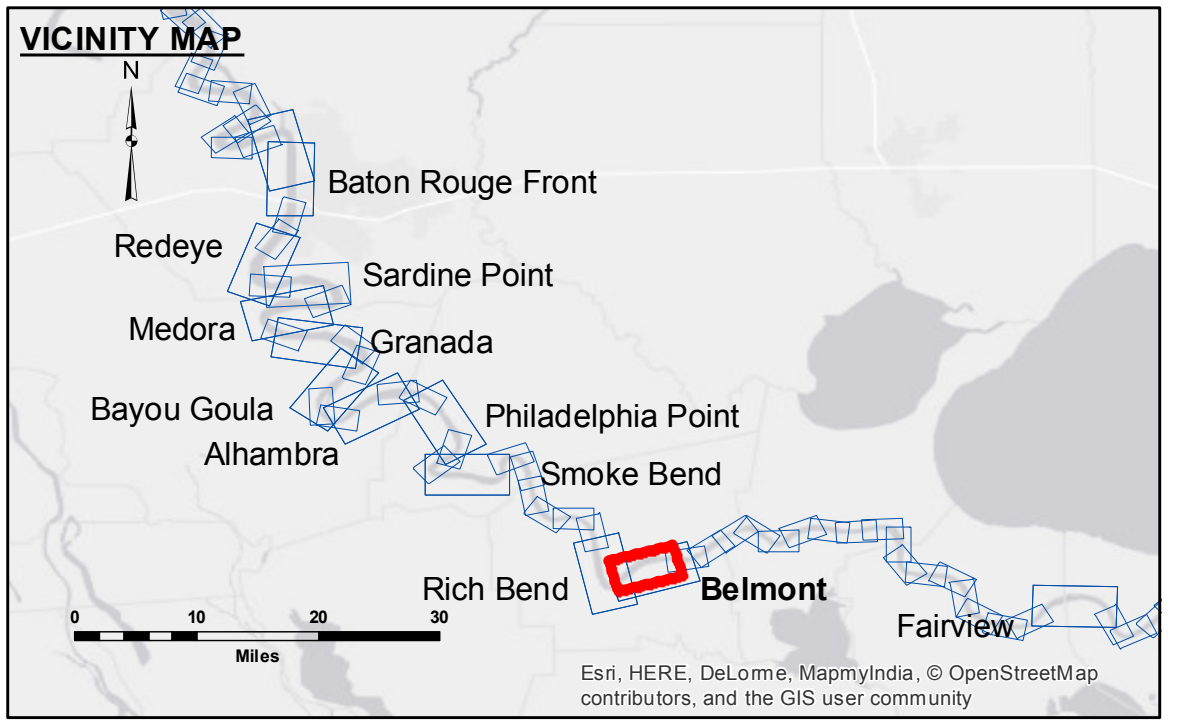


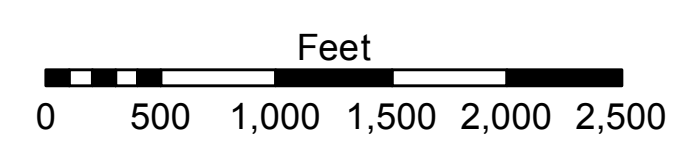
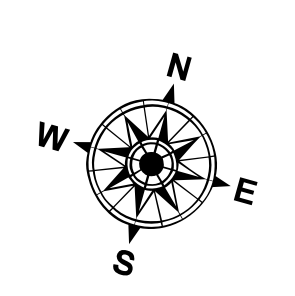
DISCLAIMER: The data represented on this map represents the results of a survey conducted by the U.S. Army Corps of Engineers. The data is provided for informational purposes only and is not intended for use in any legal proceeding. The user is responsible for the accuracy, completeness, and reliability of the data. The Corps of Engineers does not warrant the accuracy or completeness of the data. The Corps of Engineers is not responsible for any errors or omissions in the data. The Corps of Engineers is not responsible for any damages or losses resulting from the use of the data. The Corps of Engineers is not responsible for any claims or liabilities arising from the use of the data. The Corps of Engineers is not responsible for any claims or liabilities arising from the use of the data.

U.S. ARMY CORPS OF ENGINEERS NEW ORLEANS DISTRICT		
Submitted:	Surveyed By: DS/PS	Plotted By: BTD
Recommended: Chief Survey Section	Checked By: AC	Approved: Chief Waterways Maintenance Section

**MISSISSIPPI RIVER - B.R. TO GULF
BELMONT RECON
MR_30_BEL_20160818
18 August 2016**



LEGEND	
--- Federal Navigation Channel	● Cable Area
— Federal Navigation Center Line	■ Placement Area
— As-built Pipeline/Cable	□ Anchorage Area
..... Unconfirmed Pipeline/Cable	⊗ Obstruction Point
— Project Depth Contour	✶ Wrecks-Submerged
□ Borrow Area	★ Beacon, General
● Shoalest Sounding**	◆ Red Navigation Buoy
☆ Beacon, General	◆ Green Navigation Buoy
■ Placement Area	■ 0' and above
□ Anchorage Area	■ 0' to -5'
⊗ Obstruction Point	■ -5' to -10'
✶ Wrecks-Submerged	■ -10' to -20'
◆ Red Navigation Buoy	■ -20' to -30'
◆ Green Navigation Buoy	■ -30' to -35'
	■ -35' to -40'
	■ -40' to 45'
	■ -45' and below



LWRP: 1.3
Gage Reading: GAGE_READING
Sea Conditions: CALM
Vessel Name: OB-167
Survey Type: CONDITION
Sounding Frequency***: HIGH

NOTES:
Horizontal Coordinate System:
North American Datum of 1983 (NAD83), projected to the State Plane Coordinate System (SPCS), Louisiana South Zone. Distance units in U.S. Survey Feet.
Vertical Datum:
Soundings are shown in feet and indicate depths below Low Water Reference Plane 2007 (NGVD).
Distances on the Mississippi River, above and below Head of Passes are shown at 1 mile intervals.
The location of navigation aids are base on and provided by the U.S. Coast Guard and USACE crew.
2010 Aerial Photography data source: NAIP, USDA-FSA-APFO Aerial Photography Field Office.
Reference is N.O.A. Navigation Chart No. 11370.
** Shoalest Sounding per Quarter per Reach.
*** High frequency (200 kHz) survey data represents the first signal return at a sounding location and will include suspended solids, known as "fluff", if present. Low frequency (20 kHz) survey data normally penetrates through this "fluff" layer to depict elevations of consolidated bottom material. Low frequency accuracies may vary depending on channel conditions and fathometer settings.

**Sheet Reference Number
30 of 97**