

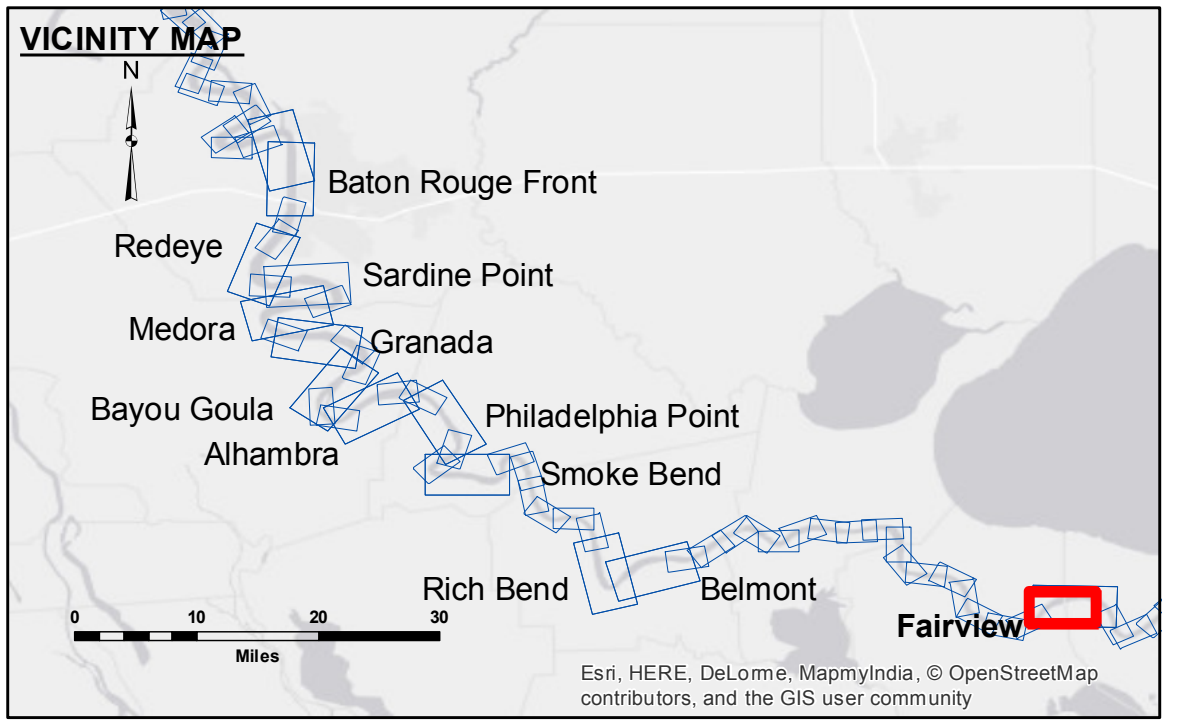
Access to Information: The United States Government furnishes these data and the recipient accepts and uses them with the express understanding that they are not to be used for any purpose other than that for which they were prepared. The user is responsible for the results of any use of the data for other than its intended purpose.

Disclaimer: Hydrographic survey data is subject to change rapidly due to several factors including but not limited to dredging, sedimentation, and other natural processes. The Corps of Engineers does not warrant the accuracy of the data for any purpose other than that for which it was collected. The information depicted on this map represents the results of a survey conducted on or about the date of the survey. The Corps of Engineers does not warrant the accuracy of the information for any purpose other than that for which it was collected.

U.S. ARMY CORPS OF ENGINEERS NEW ORLEANS DISTRICT		
Submitted:	Surveyed By: PMS/PS	Plotted By: BTD
Recommended:	Chart Survey Section	Checked By: AC
Approved:	Chart Waterways Maintenance Section	

**MISSISSIPPI RIVER - B. R. TO GULF
FAIRVIEW RECON
MR_48_FRV_20160810
10 August 2016**

**Sheet
Reference
Number
48 of 97**



LEGEND		0' and above	
--- Federal Navigation Channel	○ Cable Area	0' to -5'	
— Federal Navigation Center Line	□ Placement Area	-5' to -10'	
— As-built Pipeline/Cable	□ Anchorage Area	-10' to -20'	
..... Unconfirmed Pipeline/Cable	⊗ Obstruction Point	-20' to -30'	
— Project Depth Contour	★ Beacon, General	-30' to -35'	
	◆ Red Navigation Buoy	-35' to -40'	
	◆ Wrecks-Submerged	-40' to 45'	
		-45' and below	
	□ Borrow Area		
	● Shoalest Sounding**		

LWRP: 1.1
 Gage Reading: R:7.31 NO:5.61 USED:6.20 NGVD
 Sea Conditions: CALM
 Vessel Name: OB-167
 Survey Type: CONDITION
 Sounding Frequency***: HIGH

NOTES:

Horizontal Coordinate System:
 North American Datum of 1983 (NAD83), projected to the State Plane Coordinate System (SPCS), Louisiana South Zone. Distance units in U.S. Survey Feet.

Vertical Datum:
 Soundings are shown in feet and indicate depths below Low Water Reference Plane 2007 (NGVD).

Distances on the Mississippi River, above and below Head of Passes are shown at 1 mile intervals.

The location of navigation aids are base on and provided by the U.S. Coast Guard and USACE crew.

2010 Aerial Photography data source: NAIP, USDA-FSA-APFO Aerial Photography Field Office.

Reference is N.O.A. Navigation Chart No. 11370.

** Shoalest Sounding per Quarter per Reach.

*** High frequency (200 kHz) survey data represents the first signal return at a sounding location and will include suspended solids, known as "fluff", if present. Low frequency (20 kHz) survey data normally penetrates through this "fluff" layer to depict elevations of consolidated bottom material. Low frequency accuracies may vary depending on channel conditions and fathometer settings.