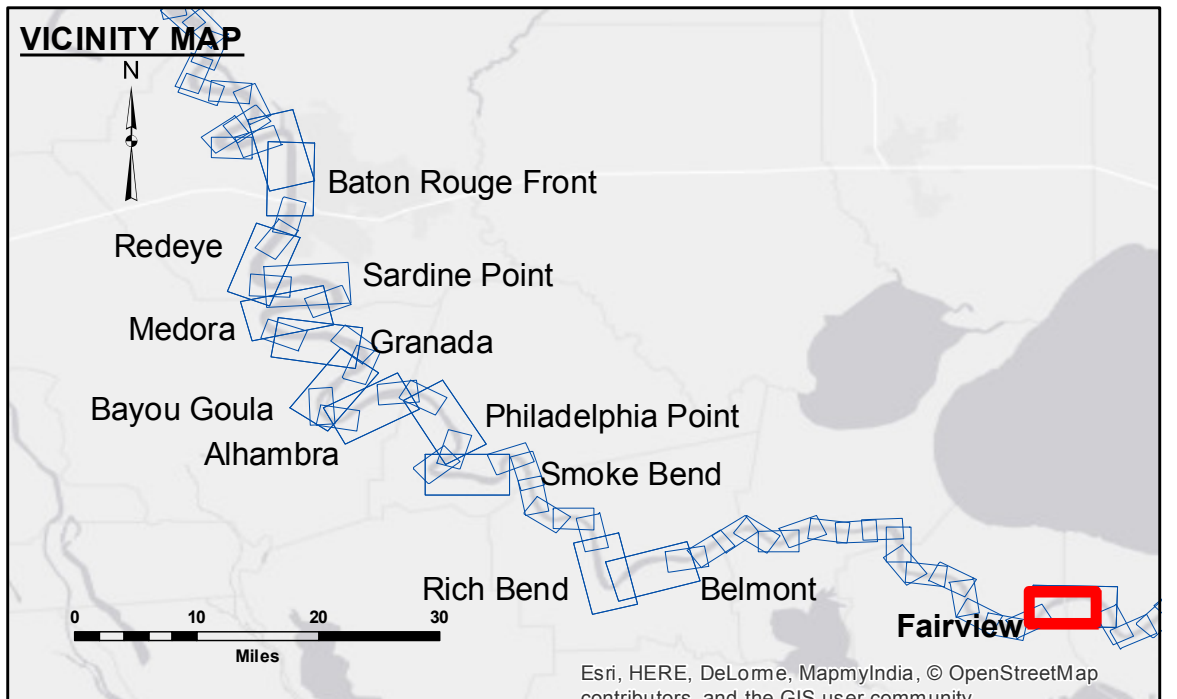


**DISCLAIMER:** The data represented on this map represents the results of a specific US Army Corps of Engineers project. The data is only valid for its intended use, control, time and accuracy. The user is responsible for the results. The application of the data for other than its intended purpose is not recommended. The US Army Corps of Engineers is not responsible for any errors or omissions in the data or for any damage or injury resulting from the use of the data. The information depicted on this map represents the results of a specific project and is not to be used for any other purpose. The user is responsible for the results. The application of the data for other than its intended purpose is not recommended. The US Army Corps of Engineers is not responsible for any errors or omissions in the data or for any damage or injury resulting from the use of the data.

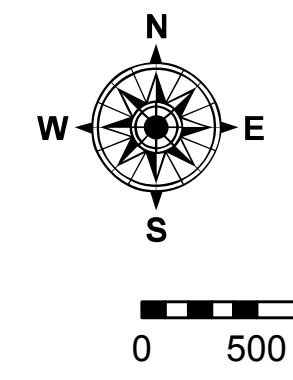
U.S. ARMY CORPS OF ENGINEERS NEW ORLEANS DISTRICT		
Submitted:	Surveyed By: DR,JA	Plotted By: AO
Recommended: Chief, Survey Section	Checked By: AO	Checked By: AO
Approved: Chief, Waterways Maintenance Section		

**MISSISSIPPI RIVER - B. R. TO GULF  
FAIRVIEW RECON  
MR\_48\_FRV\_20161202  
02 December 2016**



LEGEND	
— Federal Navigation Channel	○ Cable Area
— Federal Navigation Center Line	□ Placement Area
— As-built Pipeline/Cable	□ Anchorage Area
..... Unconfirmed Pipeline/Cable	⊗ Obstruction Point
— Project Depth Contour	⊗ Wrecks-Submerged
□ Borrow Area	★ Beacon, General
● Shoalest Sounding**	◆ Red Navigation Buoy
◆ Green Navigation Buoy	

0' and above	0' to -5'
-5' to -10'	-10' to -20'
-20' to -30'	-30' to -35'
-35' to -40'	-40' to -45'
-45' and below	



LWRP: 1.1  
Gage Reading: R:3.5NO:2.6 USED:2.90 NGVD  
Sea Conditions: CALM  
Vessel Name: M/V BURRWOOD  
Survey Type: CONDITION  
Sounding Frequency\*\*\*: HIGH

**NOTES:**  
Horizontal Coordinate System:  
North American Datum of 1983 (NAD83), projected to the State Plane Coordinate System (SPCS), Louisiana South Zone. Distance units in U.S. Survey Feet.  
Vertical Datum:  
Soundings are shown in feet and indicate depths below Low Water Reference Plane 2007 (NGVD).  
Distances on the Mississippi River, above and below Head of Passes are shown at 1 mile intervals.  
The location of navigation aids are base on and provided by the U.S. Coast Guard and USACE crew.  
2010 Aerial Photography data source: NAIP, USDA-FSA-APFO Aerial Photography Field Office.  
Reference is N.O.A. Navigation Chart No. 11370.  
\*\* Shoalest Sounding per Quarter per Reach.  
\*\*\* High frequency (200 kHz) survey data represents the first signal return at a sounding location and will include suspended solids, known as "fluff", if present. Low frequency (20 kHz) survey data normally penetrates through this "fluff" layer to depict elevations of consolidated bottom material. Low frequency accuracies may vary depending on channel conditions and fathometer settings.

**Sheet Reference Number  
48 of 97**

Revision Number:  
3.8-0-20150202