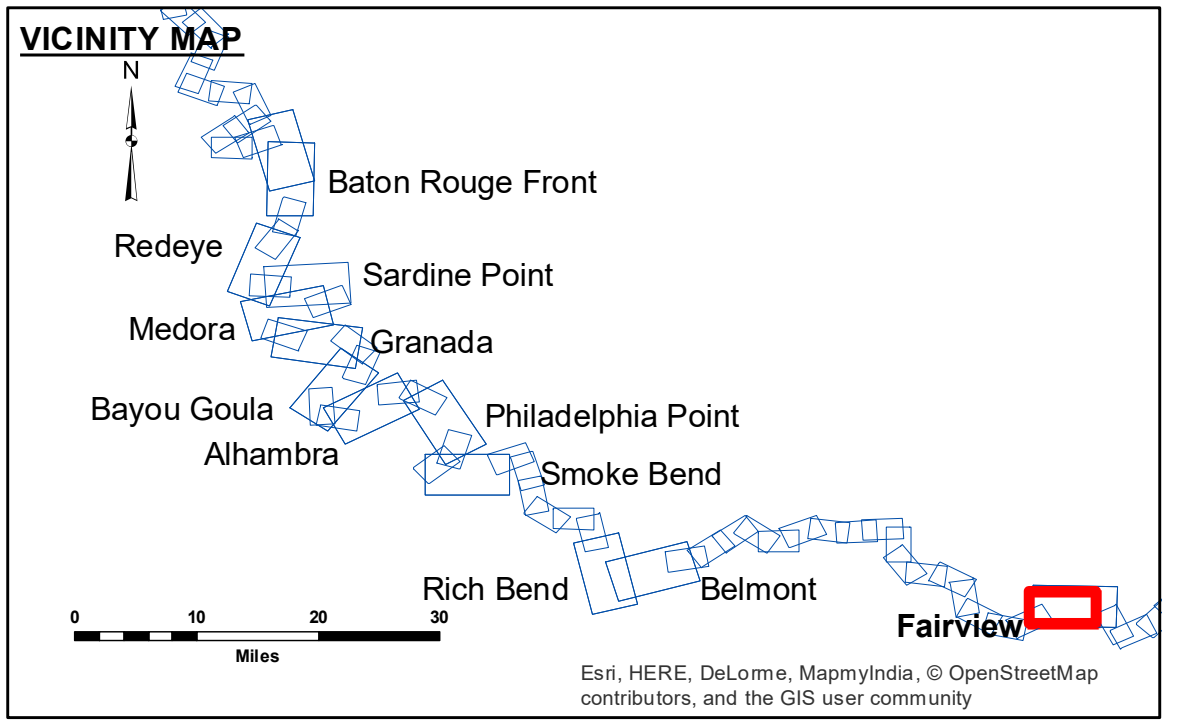


**DISCLAIMER**  
 The United States Government furnishes these data and the recipient accepts and uses them with the express understanding that the data are not to be used for any purpose other than that for which they were originally prepared. The user is responsible for the results obtained from the application of the data for other than its intended purpose.  
 The information depicted on this map represents the results of a survey conducted on or about the date of the survey. The Corps of Engineers does not warrant the accuracy of the information for purposes other than those for which it was prepared. The Corps of Engineers is not responsible for any errors or omissions in this map or for any consequences arising from its use. The Corps of Engineers is not responsible for any damage to property or injury to persons resulting from the use of this map.

U.S. ARMY CORPS OF ENGINEERS NEW ORLEANS DISTRICT		
Submitted:	Surveyed By: SPPM	Plotted By: BD
Recommended: Chart Survey Section	Checked By: MS	Approved By: MS

**MISSISSIPPI RIVER - B.R. TO GULF  
 FAIRVIEW RECON  
 MR\_48\_FRV\_20171207\_CS  
 07 December 2017**

**Sheet  
 Reference  
 Number  
 48 of 97**



LEGEND		
--- Federal Navigation Channel	○ Cable Area	□ Borrow Area
— Federal Navigation Center Line	▭ Placement Area	● Shoalest Sounding**
— As-built Pipeline/Cable	⊗ Anchorage Area	☆ Beacon, General
..... Unconfirmed Pipeline/Cable	⊗ Obstruction Point	◆ Red Navigation Buoy
— Project Depth Contour	⚓ Wrecks-Submerged	◆ Green Navigation Buoy
		0' and above
		0' to -5'
		-5' to -10'
		-10' to -20'
		-20' to -30'
		-30' to -35'
		-35' to -40'
		-40' to -45'
		-45' and below

**NOTES:**  
 Horizontal Coordinate System:  
 North American Datum of 1983 (NAD83), projected to the State Plane Coordinate System (SPCS), Louisiana South Zone. Distance units in U.S. Survey Feet.  
 Vertical Datum:  
 Soundings are shown in feet and indicate depths below Low Water Reference Plane 2007 (NGVD).  
 Distances on the Mississippi River, above and below Head of Passes are shown at 1 mile intervals.  
 The location of navigation aids are based on and provided by the U.S. Coast Guard and USACE crew.  
 2010 Aerial Photography data source: NAIP, USDA-FSA-APFO Aerial Photography Field Office.  
 Reference is N.O.A. Navigation Chart No. 11370.  
 \*\* Shoalest Sounding per Quarter per Reach.  
 \*\*\* High frequency (200 kHz) survey data represents the first signal return at a sounding location and will include suspended solids, known as "fluff", if present. Low frequency (20 kHz) survey data normally penetrates through this "fluff" layer to depict elevations of consolidated bottom material. Low frequency accuracies may vary depending on channel conditions and fathometer settings.

LWRP: 1.1  
 Gage Reading: R:6.06 NO:4.5 USED: 5.10 NGVD  
 Sea Conditions: CHOPPY  
 Vessel Name: OB-167  
 Survey Type: CONDITION  
 Sounding Frequency\*\*\*: HIGH

0 500 1,000 1,500 2,000 2,500 Feet