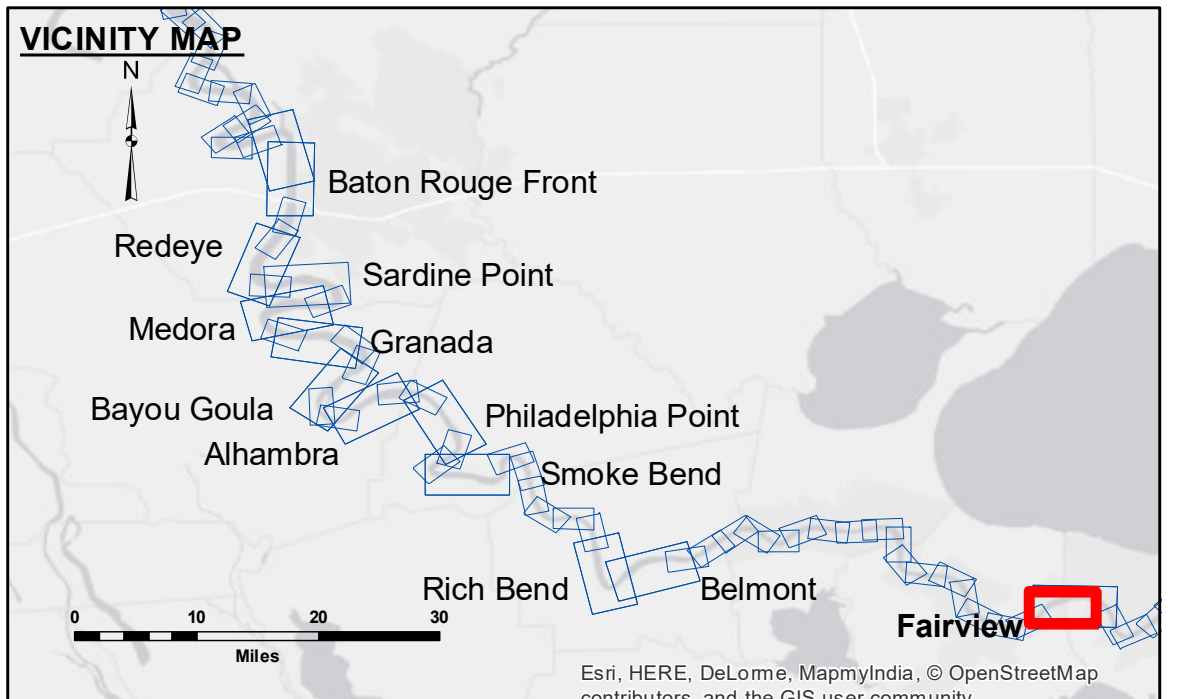


**DISTRIBUTION LIABILITY:** The data represents the results of data collection processing for a specific US Army Corps of Engineers project. It is only valid for its intended use, control, time and accuracy specifications. The user is responsible for the results. The user's application of the data for other than its intended purpose. Data Collection: Hydrographic survey data is subject to change due to several factors including but not limited to dredging, shoaling, and other channel conditions. The user is responsible for the hydrographic conditions when developed after the date of the survey. The information depicted on this map represents the results of a survey conducted on the ground and is not to be considered as a representation of the general condition existing at that time.

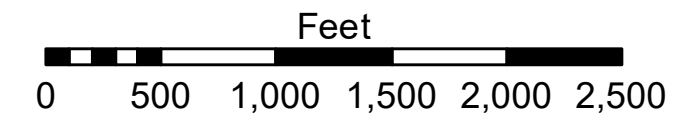
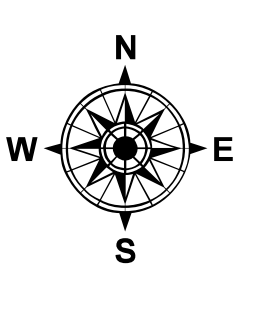
U.S. ARMY CORPS OF ENGINEERS NEW ORLEANS DISTRICT		
Submitted:	Surveyed By: DS/PS	Plotted By: BD
Recommended: Chart Survey Section	Checked By: AC	Approved: Chart Waterways Maintenance Section

**MISSISSIPPI RIVER - B.R. TO GULF  
FAIRVIEW RECON  
MR\_48\_FRV\_20180123\_CS  
23 January 2018**



LEGEND	
--- Federal Navigation Channel	● Cable Area
— Federal Navigation Center Line	■ Placement Area
— As-built Pipeline/Cable	□ Anchorage Area
..... Unconfirmed Pipeline/Cable	⊗ Obstruction Point
— Project Depth Contour	★ Wrecks-Submerged
□ Borrow Area	★ Beacon, General
● Shoalest Sounding**	◆ Red Navigation Buoy
◆ Green Navigation Buoy	

0' and above	Green
0' to -5'	Yellow
-5' to -10'	Orange
-10' to -20'	Light Blue
-20' to -30'	Blue
-30' to -35'	Dark Blue
-35' to -40'	Light Purple
-40' to -45'	Dark Purple
-45' and below	White



LWRP: 1.1  
 Gage Reading: R:4.37 NO:2.95 USED:3.5 NGVD  
 Sea Conditions: CALM  
 Vessel Name: M/V LAFOURCHE  
 Survey Type: CONDITION  
 Sounding Frequency\*\*\*: HIGH

**NOTES:**  
 Horizontal Coordinate System:  
 North American Datum of 1983 (NAD83), projected to the State Plane Coordinate System (SPCS), Louisiana South Zone. Distance units in U.S. Survey Feet.  
 Vertical Datum:  
 Soundings are shown in feet and indicate depths below Low Water Reference Plane 2007 (NGVD).  
 Distances on the Mississippi River, above and below Head of Passes are shown at 1 mile intervals.  
 The location of navigation aids are based on and provided by the U.S. Coast Guard and USACE crew.  
 2010 Aerial Photography data source: NAIP, USDA-FSA-APFO Aerial Photography Field Office.  
 Reference is N.O.A. Navigation Chart No. 11370.  
 \*\* Shoalest Sounding per Quarter per Reach.  
 \*\*\* High frequency (200 kHz) survey data represents the first signal return at a sounding location and will include suspended solids, known as "fluff", if present. Low frequency (20 kHz) survey data normally penetrates through this "fluff" layer to depict elevations of consolidated bottom material. Low frequency accuracies may vary depending on channel conditions and fathometer settings.

**Sheet Reference Number  
48 of 97**