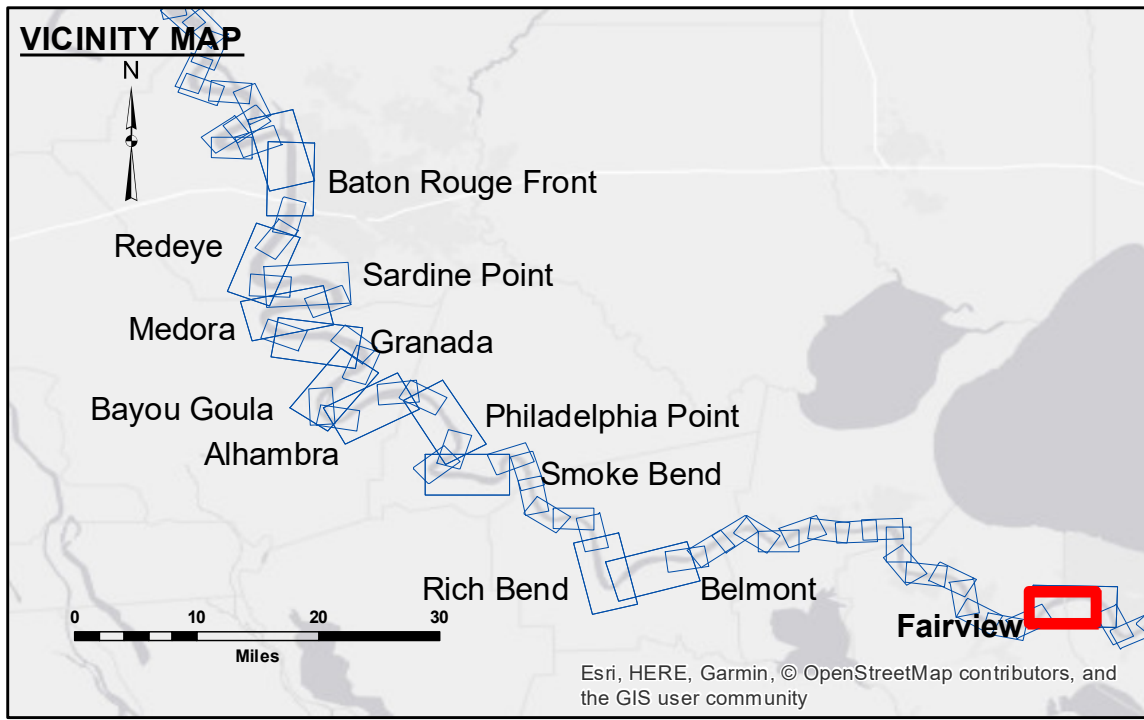


DISCLAIMER: The data represents the results of data collection processing for a specific US Army Corps of Engineers project. The data is not intended for use in any other project. The user is responsible for the results of any application of the data for other than its intended purpose. Data Collection: Hydrographic survey data is subject to change due to several factors including but not limited to dredging, sedimentation, and changes in bathymetry. The user is responsible for the results of any application of the data for other than its intended purpose. The information depicted on this map represents the results of a survey conducted on the date of the survey and is not intended to represent the general condition existing at that time.

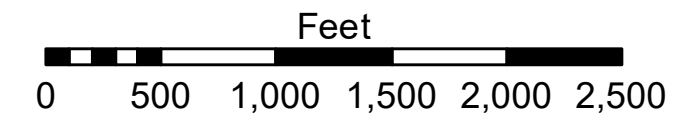
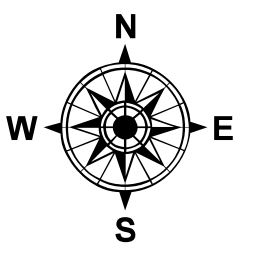
| | | |
|--|----------------------|--|
| U.S. ARMY CORPS OF ENGINEERS NEW ORLEANS DISTRICT | | |
| Submitted: | Surveyed By: SPPM | Plotted By: BD |
| Recommended: Chart Survey Section | Checked By: AC | Approved: Chart Waterways Maintenance Section |

**MISSISSIPPI RIVER - B.R. TO GULF
FAIRVIEW RECON
MR_48_FRV_20190412_CS
12 April 2019**

**Sheet Reference Number
48 of 97**



| LEGEND | | |
|----------------------------------|---------------------|-------------------------|
| --- Federal Navigation Channel | ○ Cable Area | □ Borrow Area |
| — Federal Navigation Center Line | □ Placement Area | ● Shoalest Sounding** |
| — As-built Pipeline/Cable | □ Anchorage Area | ★ Beacon, General |
| Unconfirmed Pipeline/Cable | ⊗ Obstruction Point | ◆ Red Navigation Buoy |
| — Project Depth Contour | ⚓ Wrecks-Submerged | ◆ Green Navigation Buoy |
| | | 0' and above |
| | | 0' to -5' |
| | | -5' to -10' |
| | | -10' to -20' |
| | | -20' to -30' |
| | | -30' to -35' |
| | | -35' to -40' |
| | | -40' to -45' |
| | | -45' and below |



LWRP: 1.1
Gage Reading: R:22.98 NO:15.98 USED:18.4 NGVD
Sea Conditions: CHOPPY
Vessel Name: OB-167
Survey Type: CONDITION
Sounding Frequency***: HIGH

NOTES:
Horizontal Coordinate System: North American Datum of 1983 (NAD83), projected to the State Plane Coordinate System (SPCS), Louisiana South Zone. Distance units in U.S. Survey Feet.
Vertical Datum: Soundings are shown in feet and indicate depths below Low Water Reference Plane 2007 (NGVD).
Distances on the Mississippi River, above and below Head of Passes are shown at 1 mile intervals.
The location of navigation aids are based on and provided by the U.S. Coast Guard and USACE crew.
2015 Aerial Photography data source: NAIP, USDA-FSA-APFO Aerial Photography Field Office.
Reference is N.O.A. Navigation Chart No. 11370.
** Shoalest Sounding per Quarter per Reach.
*** High frequency (200 kHz) survey data represents the first signal return at a sounding location and will include suspended solids, known as "fluff", if present. Low frequency (20 kHz) survey data normally penetrates through this "fluff" layer to depict elevations of consolidated bottom material. Low frequency accuracies may vary depending on channel conditions and fathometer settings.