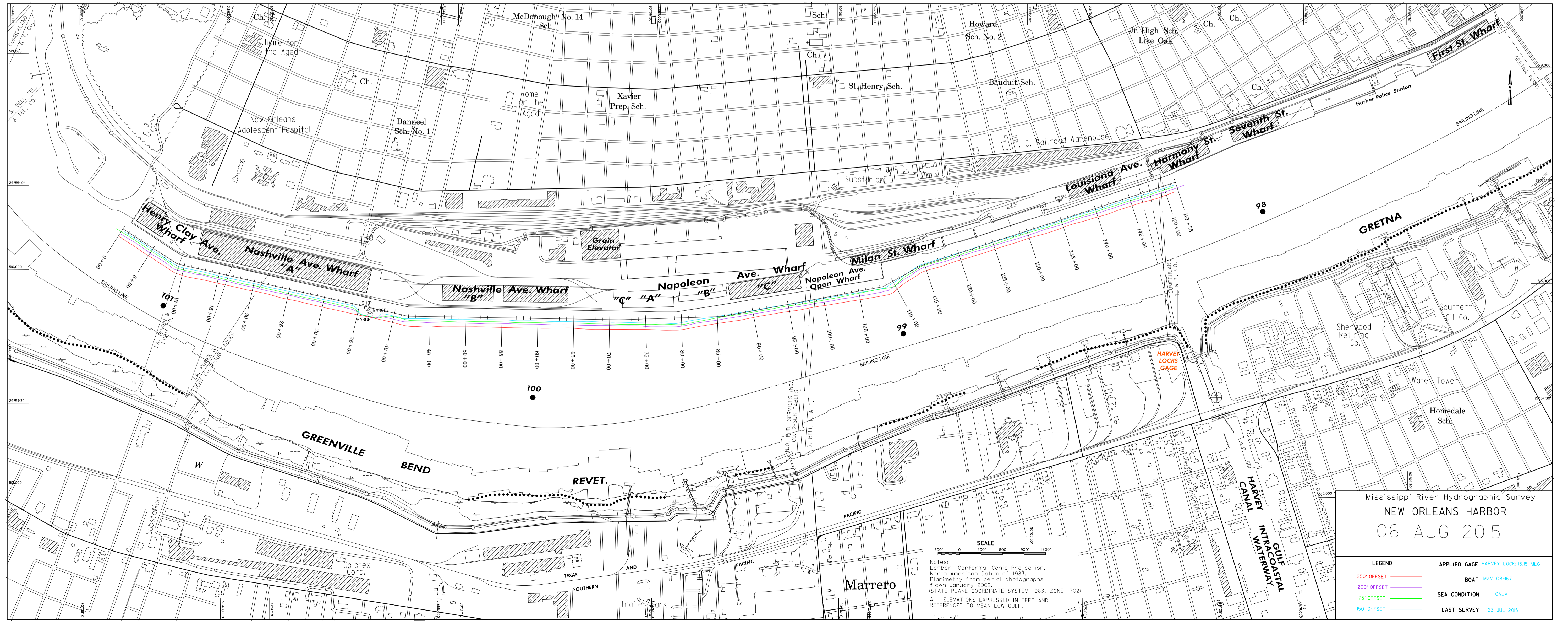
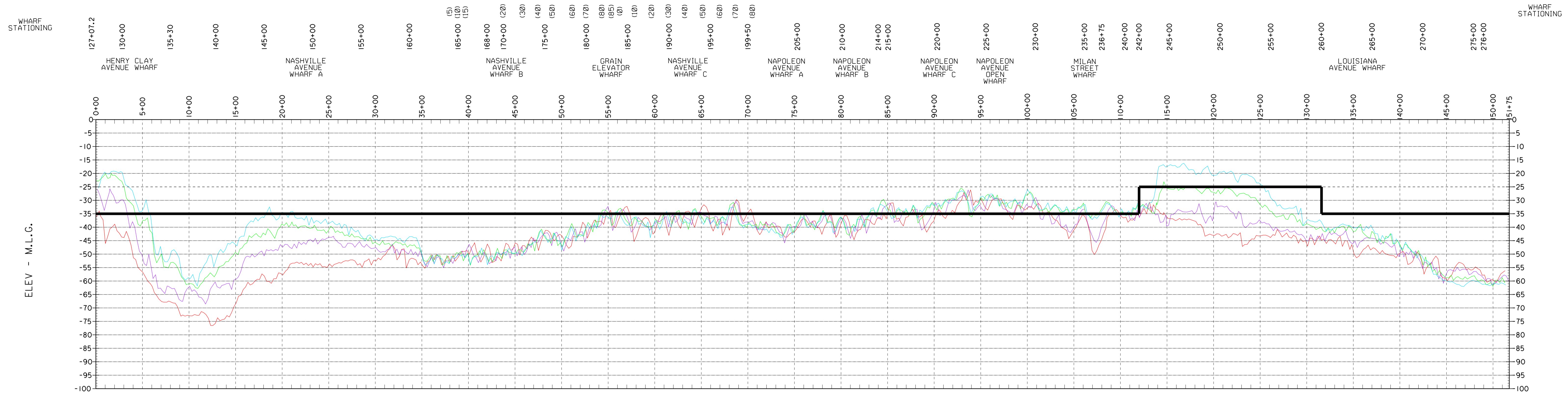


New Orleans Harbor 150', 175', 200' & 250' Offsets



Notes:
 Lambert Conformal Conic Projection,
 North American Datum of 1983,
 Planimetry from aerial photographs
 flown January 2002.
 STATE PLANE COORDINATE SYSTEM 1983, ZONE 1702
 ALL ELEVATIONS EXPRESSED IN FEET AND
 REFERENCED TO MEAN LOW GULF.

Mississippi River Hydrographic Survey
NEW ORLEANS HARBOR
 06 AUG 2015

LEGEND		APPLIED GAGE HARVEY LOCK 15.5 M.L.G.	
250' OFFSET	—	BOAT	M/V 08-67
200' OFFSET	—	SEA CONDITION	CALM
175' OFFSET	—	LAST SURVEY	23 JUL 2005
150' OFFSET	—		