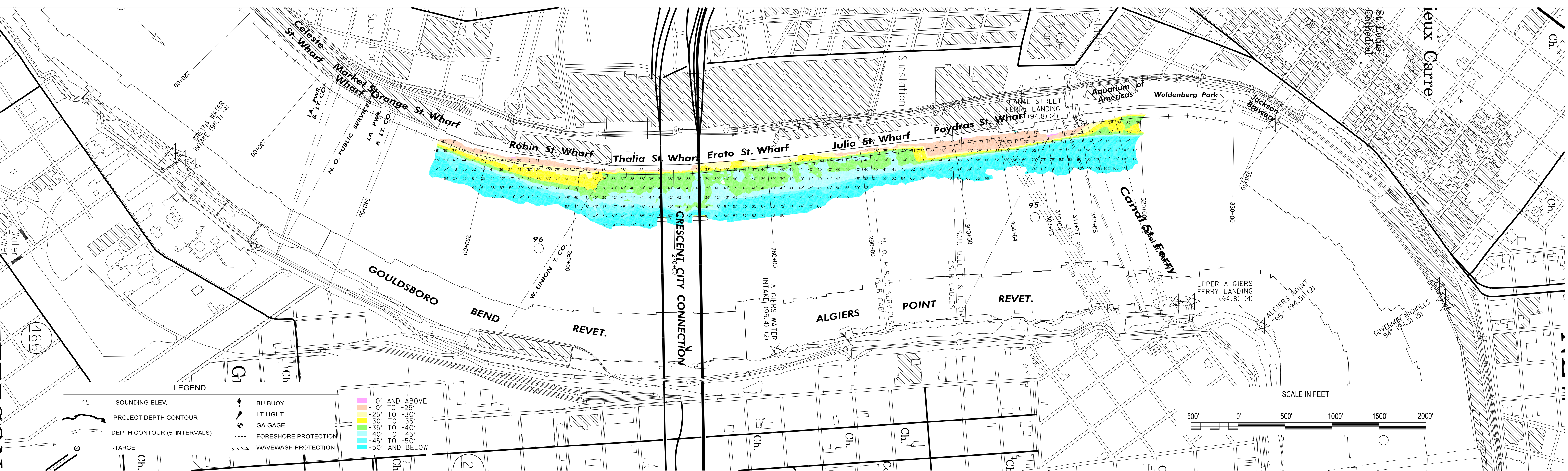


--- ELEVATION MAINTAINED BY THE PORT OF NEW ORLEANS STA. 293+40 TO 333+00

- 100' OFFSET
- 150' OFFSET
- 175' OFFSET
- 200' OFFSET
- 250' OFFSET



<p>US Army Corps of Engineers NEW ORLEANS DISTRICT</p>	<p>U.S. ARMY CORPS OF ENGINEERS NEW ORLEANS DISTRICT NEW ORLEANS, LOUISIANA</p> <p>OPERATIONS DIVISION TECHNICAL SUPPORT BRANCH CHANNEL SURVEY SECTION</p>	<p>TECHNICIAN: MOLLERE/SOUKI SURVEY VESSEL: MV/0B169 FREQUENCY: 200 KHZ PROCESSED BY: ATO CHECKED BY: MK</p>	<p>MISSISSIPPI RIVER HYDROGRAPHIC SURVEY NEW ORLEANS HARBOR</p> <p>MR_54_NO1 - Sta. 0+00 to 160+00</p>	<p>NOTES: ALL ELEVATIONS ARE EXPRESSED IN FEET AND REFER TO MEAN LOW GULF (MLG) RELATIVE TO THE NATIONAL GEODETIC VERTICAL DATUM OF 1929 (NGVD 29) IN 1973. CONTOURS ABOVE AND BELOW MLG ARE EXPRESSED IN FEET AT 5 FT. INTERVALS. ALL AZIMUTHS ARE GEODETIC AND TURNED CLOCKWISE FROM 0 (TRUE NORTH).</p> <p>○ DISTANCES ON THE MISSISSIPPI RIVER ARE SHOWN AT 1 MILE INTERVALS.</p>	<p>PROJECTION..... LAMBERT CONFORMAL CONIC (EX: 30°28' 0") SYSTEM..... STATE PLANE, LOUISIANA SOUTH, ZONE 1702 (EX: 715,000) HORIZONTAL DATUM..... NORTH AMERICAN DATUM 1983 (NAD 83) VERTICAL DATUM..... MEAN LOW GULF (MLG)</p>	<p>LWRP: N/A GAGE READING: HARVEY/IHNC AVG: 4.4 MLG DATE OF LAST SURVEY: 03 SEP 2015 CODES: MULTIBEAM SURVEY CONDITION: SEA CONDITIONS</p>	<p>FILENAME/SURVEY DATE: 22 SEP 2015</p>	<p>SHEET IDENTIFICATION</p>
---	--	--	---	---	---	--	---	-----------------------------