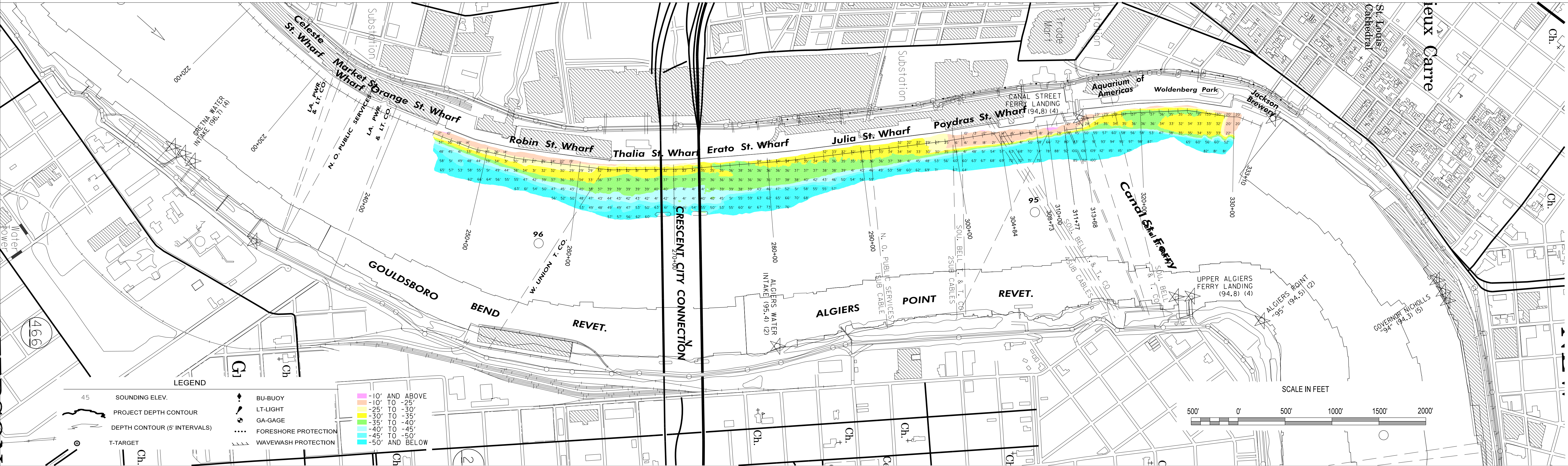


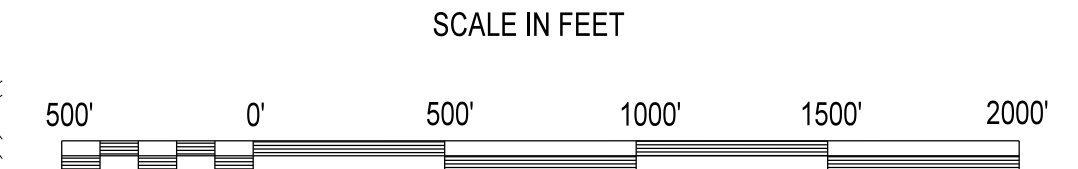
--- ELEVATION MAINTAINED BY THE PORT OF NEW ORLEANS STA. 293+40 TO 333+00

- 100' OFFSET
- 150' OFFSET
- 175' OFFSET
- 200' OFFSET
- 250' OFFSET



LEGEND

- | | | |
|----|------------------------------|----------------------|
| 45 | SOUNDING ELEV. | BU-BUOY |
| — | PROJECT DEPTH CONTOUR | LT-LIGHT |
| — | DEPTH CONTOUR (5' INTERVALS) | GA-GAGE |
| — | T-TARGET | FORESHORE PROTECTION |
| — | | WAVEWASH PROTECTION |
-
- | | |
|---|----------------|
| — | -10' AND ABOVE |
| — | -10' TO -25' |
| — | -25' TO -30' |
| — | -30' TO -35' |
| — | -35' TO -40' |
| — | -40' TO -45' |
| — | -45' TO -50' |
| — | -50' AND BELOW |



U.S. ARMY CORPS OF ENGINEERS
 NEW ORLEANS DISTRICT
 NEW ORLEANS, LOUISIANA

OPERATIONS DIVISION
 TECHNICAL SUPPORT BRANCH
 CHANNEL SURVEY SECTION

TECHNICIAN: MOLLERE/SOUKI
 SURVEY VESSEL: MV 7 OB169
 FREQUENCY: 200 KHZ
 PROCESSED BY: BTD
 CHECKED BY: MSK

**MISSISSIPPI RIVER
 HYDROGRAPHIC SURVEY
 NEW ORLEANS HARBOR**

MR_54_NO1 - Sta. 0+00 to 160+00

NOTES:
 ALL ELEVATIONS ARE EXPRESSED IN FEET AND REFER TO MEAN LOW GULF (MLG) RELATIVE TO THE NATIONAL GEODETIC VERTICAL DATUM OF 1929 (NGVD 29) IN 1973. CONTOURS ABOVE AND BELOW MLG ARE EXPRESSED IN FEET AT 5 FT. INTERVALS. ALL AZIMUTHS ARE GEODETIC AND TURNED CLOCKWISE FROM 0 (TRUE NORTH).

○ DISTANCES ON THE MISSISSIPPI RIVER ARE SHOWN AT 1 MILE INTERVALS.

PROJECTION..... LAMBERT CONFORMAL CONIC
 (EX: 30°28' 0")
 SYSTEM..... STATE PLANE, LOUISIANA SOUTH, ZONE 1702
 (EX: 715,000)
 HORIZONTAL DATUM..... NORTH AMERICAN DATUM 1983 (NAD 83)
 VERTICAL DATUM..... MEAN LOW GULF (MLG)

LWRP: N/A
 GAGE READING: HARVEY/IHNC AVG: 7.8 MLG
 DATE OF LAST SURVEY: 27 OCT 2015
 CODES: MULTIBEAM
 SURVEY CONDITION: CALM

FILENAME/SURVEY DATE:
 03 DEC 2015

SHEET IDENTIFICATION