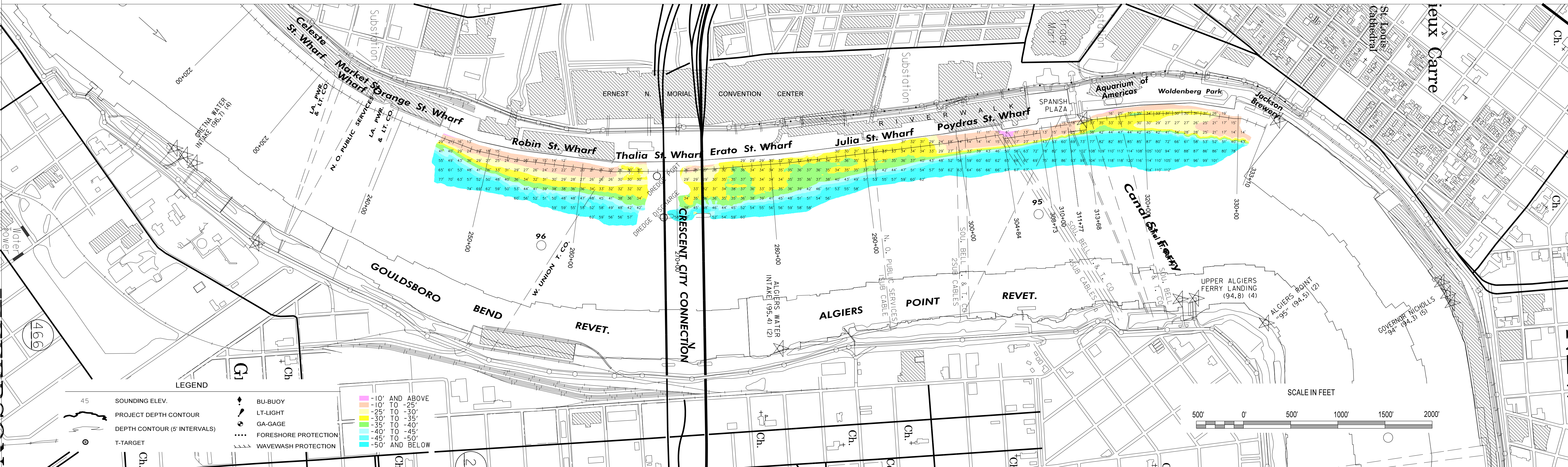


--- ELEVATION MAINTAINED BY THE PORT OF NEW ORLEANS STA. 293+40 TO 333+00

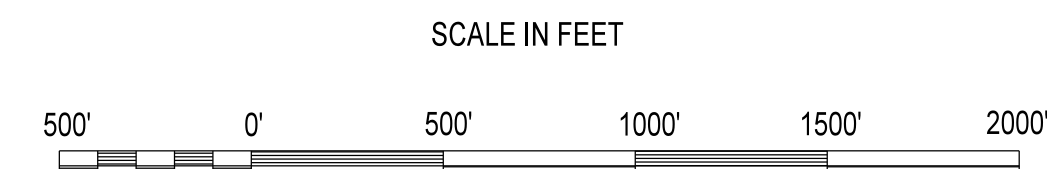
- 100' OFFSET
- 150' OFFSET
- 175' OFFSET
- 200' OFFSET
- 250' OFFSET



LEGEND

- |    |                              |     |                      |
|----|------------------------------|-----|----------------------|
| 45 | SOUNDING ELEV.               | ◆   | BU-BUOY              |
| —  | PROJECT DEPTH CONTOUR        | ○   | LT-LIGHT             |
| —  | DEPTH CONTOUR (5' INTERVALS) | ○   | GA-GAGE              |
| —  | T-TARGET                     | --- | FORESHORE PROTECTION |
|    |                              | --- | WAVEWASH PROTECTION  |

- |   |                |
|---|----------------|
| — | -10' AND ABOVE |
| — | -10' TO -25'   |
| — | -25' TO -30'   |
| — | -30' TO -35'   |
| — | -35' TO -40'   |
| — | -40' TO -45'   |
| — | -45' TO -50'   |
| — | -50' AND BELOW |



U.S. ARMY CORPS OF ENGINEERS  
NEW ORLEANS DISTRICT  
NEW ORLEANS, LOUISIANA

OPERATIONS DIVISION  
TECHNICAL SUPPORT BRANCH  
CHANNEL SURVEY SECTION

TECHNICIAN: MOLLERE/SOUKI  
SURVEY VESSEL: MV7 OBI69  
FREQUENCY: 400 KHZ  
PROCESSED BY: BD  
CHECKED BY: AO

**MISSISSIPPI RIVER  
HYDROGRAPHIC SURVEY  
NEW ORLEANS HARBOR**

MR\_54\_NO1 - Sta. 0+00 to 160+00

NOTES:  
ALL ELEVATIONS ARE EXPRESSED IN FEET AND REFER TO MEAN LOW GULF (MLG) RELATIVE TO THE NATIONAL GEODETIC VERTICAL DATUM OF 1929 (NGVD 29) IN 1973. CONTOURS ABOVE AND BELOW MLG ARE EXPRESSED IN FEET AT 5 FT. INTERVALS. ALL AZIMUTHS ARE GEODETIC AND TURNED CLOCKWISE FROM 0 ( TRUE NORTH ).

○ DISTANCES ON THE MISSISSIPPI RIVER ARE SHOWN AT 1 MILE INTERVALS.

PROJECTION..... LAMBERT CONFORMAL CONIC  
(EX: 30°28' 0" )  
SYSTEM..... STATE PLANE, LOUISIANA SOUTH, ZONE 1702  
(EX: 75,000 )  
HORIZONTAL DATUM..... NORTH AMERICAN DATUM 1983 (NAD 83)  
VERTICAL DATUM..... MEAN LOW GULF (MLG)

LWRP: N/A  
GAGE READING: HARVEY/IHNC AVG: 8.57 MLG  
DATE OF LAST SURVEY: 09 MAR 2017  
CODES: MULTIBEAM  
SURVEY CONDITION: CALM

FILENAME/SURVEY DATE:  
**21 MAR 2017**

SHEET IDENTIFICATION