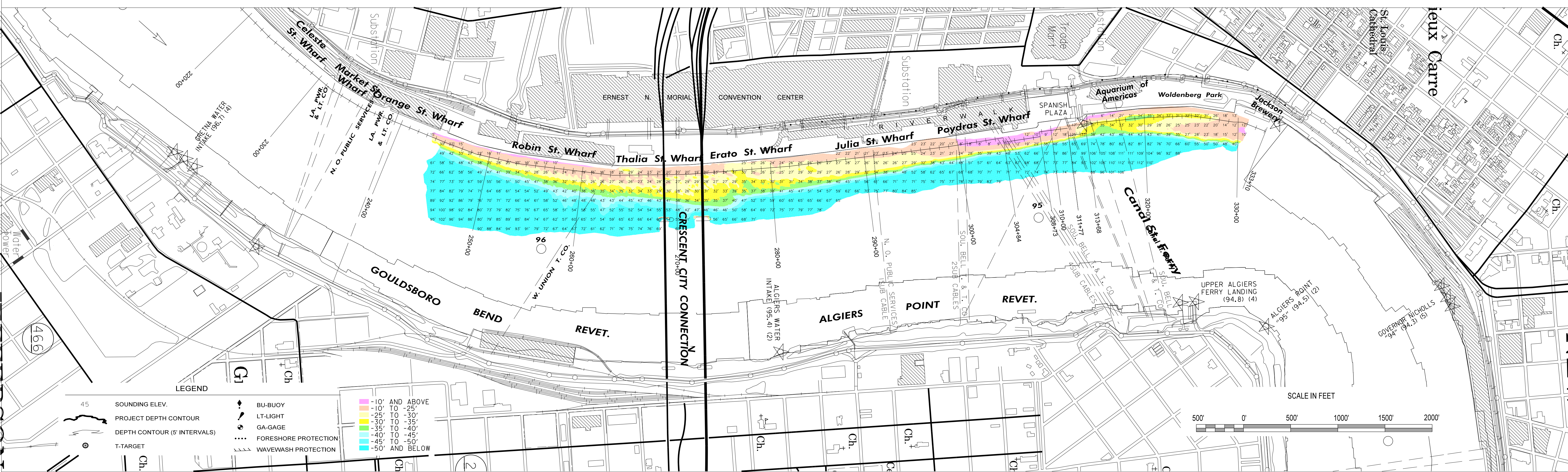


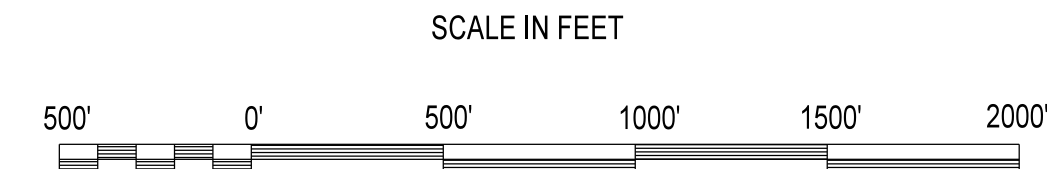
--- ELEVATION MAINTAINED BY THE PORT OF NEW ORLEANS STA. 293+40 TO 333+00

- 100' OFFSET
- 150' OFFSET
- 175' OFFSET
- 200' OFFSET
- 250' OFFSET



LEGEND

- | | | | |
|----|------------------------------|----------------------|----------------|
| 45 | SOUNDING ELEV. | BU-BUOY | -10' AND ABOVE |
| | PROJECT DEPTH CONTOUR | LT-LIGHT | -10' TO -25' |
| | DEPTH CONTOUR (5' INTERVALS) | GA-GAGE | -25' TO -30' |
| | T-TARGET | FORESHORE PROTECTION | -30' TO -35' |
| | | WAVEWASH PROTECTION | -35' TO -40' |
| | | | -40' TO -45' |
| | | | -45' TO -50' |
| | | | -50' AND BELOW |



U.S. ARMY CORPS OF ENGINEERS
NEW ORLEANS DISTRICT
NEW ORLEANS, LOUISIANA

OPERATIONS DIVISION
TECHNICAL SUPPORT BRANCH
CHANNEL SURVEY SECTION

TECHNICIAN: MOLLERE/SOUK1
SURVEY VESSEL: 877 OB169
FREQUENCY: 400 KHZ
PROCESSED BY: BD
CHECKED BY: AO

**MISSISSIPPI RIVER
HYDROGRAPHIC SURVEY
NEW ORLEANS HARBOR**

MR_54_NO1 - Sta. 0+00 to 160+00

NOTES:
ALL ELEVATIONS ARE EXPRESSED IN FEET AND REFER TO MEAN LOW GULF (MLG) RELATIVE TO THE NATIONAL GEODETIC VERTICAL DATUM OF 1929 (NGVD 29) IN 1973. CONTOURS ABOVE AND BELOW MLG ARE EXPRESSED IN FEET AT 5 FT. INTERVALS. ALL AZIMUTHS ARE GEODETIC AND TURNED CLOCKWISE FROM 0 (TRUE NORTH).

○ DISTANCES ON THE MISSISSIPPI RIVER ARE SHOWN AT 1 MILE INTERVALS.

PROJECTION..... LAMBERT CONFORMAL CONIC
(EX: 30°28' 0")
SYSTEM..... STATE PLANE, LOUISIANA SOUTH, ZONE 1702
(EX: 715,000)
HORIZONTAL DATUM..... NORTH AMERICAN DATUM 1983 (NAD 83)
VERTICAL DATUM..... MEAN LOW GULF (MLG)

LWRP: N/A
GAGE READING: HARVEY/IHNC AVG: 13.12 MLG
DATE OF LAST SURVEY: 08 JUN 2017
CODES: MULTIBEAM
SURVEY CONDITION: CHOPPY

FILENAME/SURVEY DATE:
20 JUN 2017

SHEET IDENTIFICATION