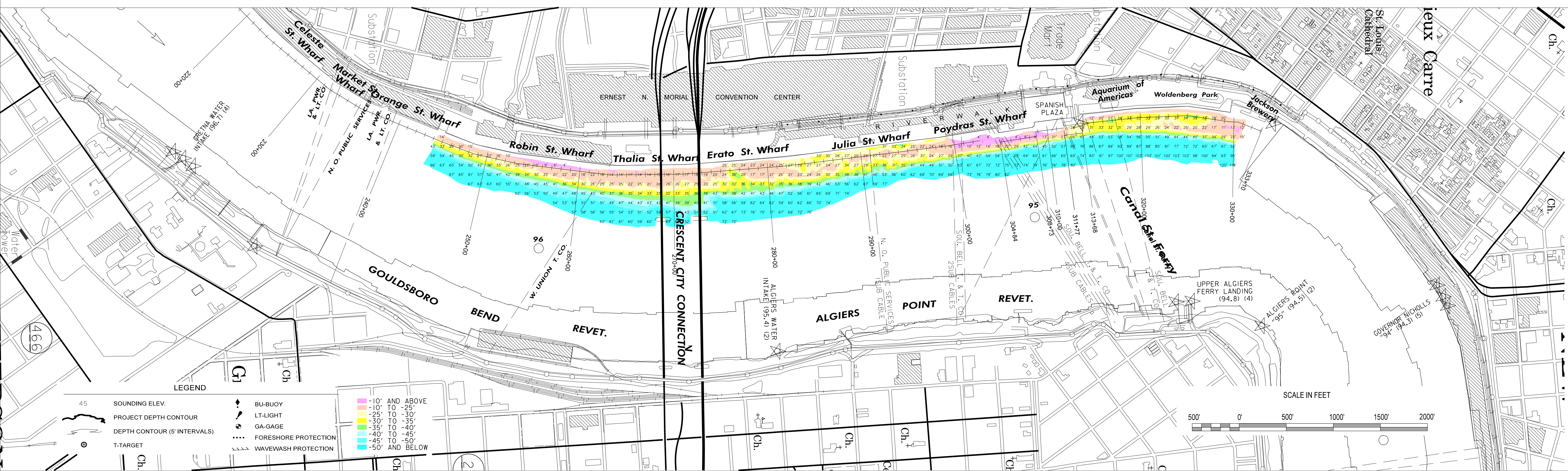


— ELEVATION MAINTAINED BY THE PORT OF NEW ORLEANS STA. 293+40 TO 333+00

- 100' OFFSET
- 150' OFFSET
- 175' OFFSET
- 200' OFFSET
- 250' OFFSET



| | | | | | | | | |
|---|---|---|---|---|---|--|---|-----------------------------|
| U.S. Army Corps of Engineers NEW ORLEANS DISTRICT NEW ORLEANS, LOUISIANA | OPERATIONS DIVISION TECHNICAL SUPPORT BRANCH CHANNEL SURVEY SECTION | TECHNICIAN: DS/SP SURVEY VESSEL: OB167 FREQUENCY: 400 KHZ PROCESSED BY: BD CHECKED BY: AO | MISSISSIPPI RIVER HYDROGRAPHIC SURVEY NEW ORLEANS HARBOR MR_54_NO3 - Sta. 220+00 to 333+10 | NOTES: ALL ELEVATIONS ARE EXPRESSED IN FEET AND REFER TO MEAN LOW GULF (MLG) RELATIVE TO THE NATIONAL GEODETIC VERTICAL DATUM OF 1929 (NGVD 29) IN 1973. CONTOURS ABOVE AND BELOW MLG ARE EXPRESSED IN FEET AT 5 FT. INTERVALS. ALL AZIMUTHS ARE GEODETIC AND TURNED CLOCKWISE FROM 0 (TRUE NORTH). ○ DISTANCES ON THE MISSISSIPPI RIVER ARE SHOWN AT 1 MILE INTERVALS. | PROJECTION..... LAMBERT CONFORMAL CONIC (EX: 30°28' 0") SYSTEM..... STATE PLANE, LOUISIANA SOUTH, ZONE 1702 (EX: 715,000) HORIZONTAL DATUM..... NORTH AMERICAN DATUM 1983 (NAD 83) VERTICAL DATUM..... MEAN LOW GULF (MLG) | LWRP: N/A GAGE READING: HARVEY/IHNC AVG:16.10 MLG DATE OF LAST SURVEY: 19 APR 2019 CODES: MULTIBEAM SURVEY CONDITION: CALM | FILENAME/SURVEY DATE: <div style="font-size: 2em; text-align: center; margin-top: 10px;">14 MAY 2019</div> | SHEET IDENTIFICATION |
|---|---|---|---|---|---|--|---|-----------------------------|