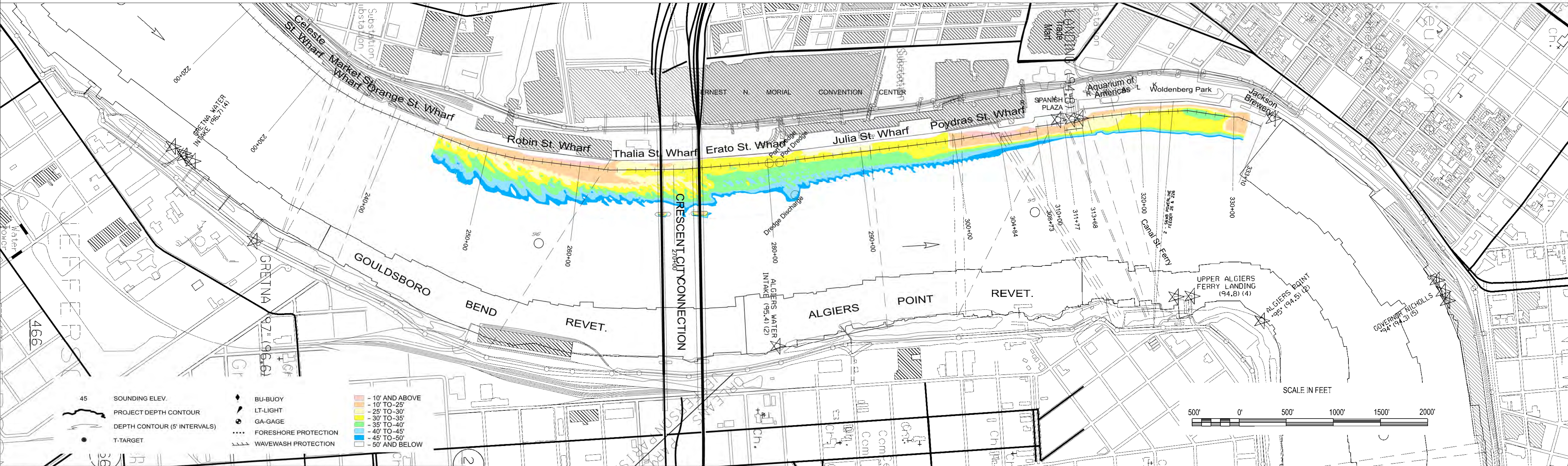


ELEVATION MAINTAINED BY THE PORT OF NEW ORLEANS STA. 293+40 TO 333+00

100' OFFSET
 150' OFFSET
 200' OFFSET
 250' OFFSET



45 SOUNDING ELEV.
 PROJECT DEPTH CONTOUR
 DEPTH CONTOUR (5' INTERVALS)
 T-TARGET

BU-BUOY
 LT-LIGHT
 GA-GAGE
 FORESHORE PROTECTION
 WAVEWASH PROTECTION

-10' AND ABOVE
 -10' TO -25'
 -25' TO -30'
 -30' TO -35'
 -35' TO -40'
 -40' TO -45'
 -45' TO -50'
 -50' AND BELOW

SCALE IN FEET

500' 0' 500' 1000' 1500' 2000'



TECHNICIAN: PM, AO
 SURVEY VESSEL: OB-167
 FREQUENCY: 400 kHz
 PROCESSED BY: BD
 CHECKED BY: AO/JH

**MISSISSIPPI RIVER
 HYDROGRAPHIC SURVEY
 NEW ORLEANS HARBOR**
 MR_56_NO3 - Sta. 220+00 to 333+10

NOTES:
 ALL ELEVATIONS IN FEET AND REFER TO LOW WATER REFERENCE PLANE (LWRP07) RELATIVE TO THE NORTH AMERICAN VERTICAL DATUM OF 1988 (NAVD88). CONTOURS ABOVE AND BELOW LWRP ARE EXPRESSED IN FEET AT 5 FT. INTERVALS. ALL AZIMUTHS ARE GEODETIC AND TURNED CLOCKWISE FROM 0 (TRUE NORTH).
 ○ DISTANCES ON THE MISSISSIPPI RIVER ARE SHOWN AT 1 MILE INTERVALS.

PROJECTION..... LAMBERT CONFORMAL CONIC
 (EX: 30° 28' 0")
 SYSTEM..... STATE PLANE, LOUISIANA SOUTH, ZONE 1702
 (EX: 715 000)
 HORIZONTAL DATUM..... NORTH AMERICAN DATUM 1983 (NAD 83)
 VERTICAL DATUM..... LOW WATER REFERENCE PLANE (LWRP07)

LWRP: 0.6
 GAGE READING: VRS: 8.87 NAVD88
 DATE OF LAST SURVEY: 05 APR 2024
 CODES: MULTIBEAM
 SURVEY CONDITION: CALM

FILENAME/SURVEY DATE:
03 MAY 2024

SHEET IDENTIFICATION
56