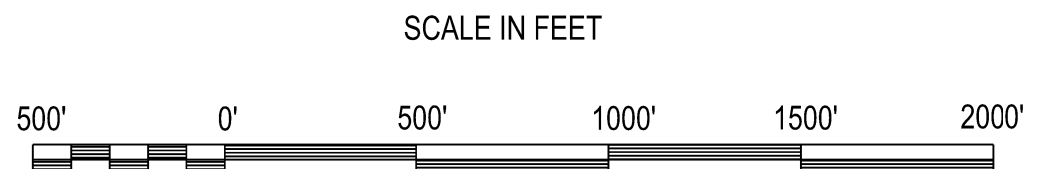
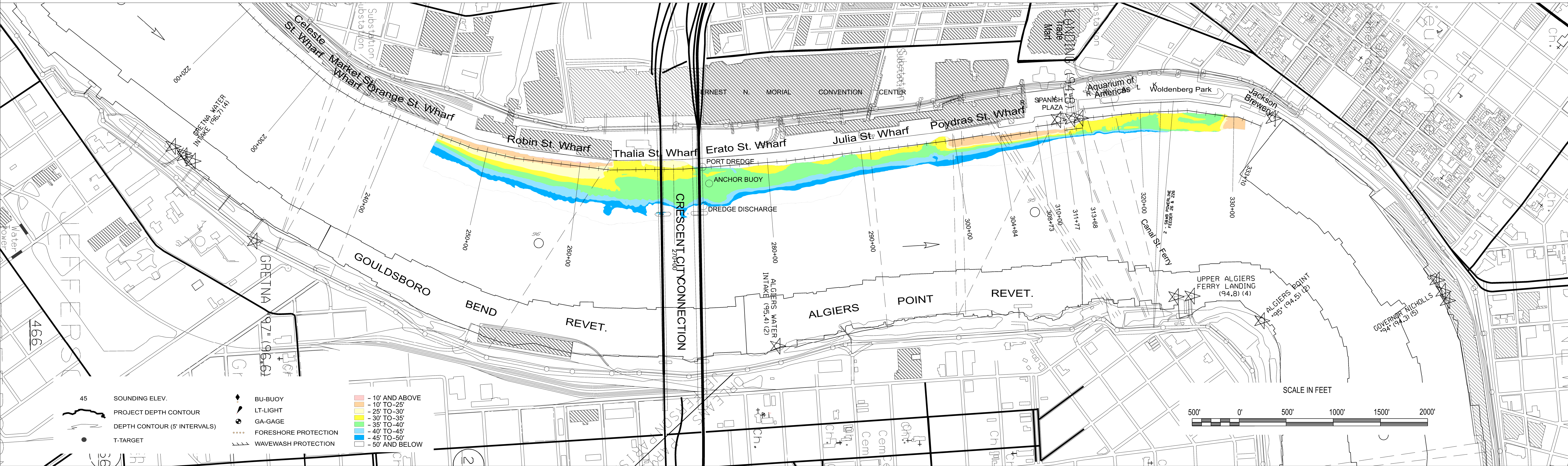


— ELEVATION MAINTAINED BY THE PORT OF NEW ORLEANS STA. 293+40 TO 333+00

- 100' OFFSET
- 150' OFFSET
- 200' OFFSET
- 250' OFFSET



- 45 SOUNDING ELEV.
- PROJECT DEPTH CONTOUR
- DEPTH CONTOUR (5' INTERVALS)
- T-TARGET
- BU-BUOY
- LT-LIGHT
- GA-GAGE
- FORESHORE PROTECTION
- WAVEWASH PROTECTION
- 10' AND ABOVE
- 10' TO -25'
- 25' TO -30'
- 30' TO -35'
- 35' TO -40'
- 40' TO -45'
- 45' TO -50'
- 50' AND BELOW



U.S. ARMY CORPS OF ENGINEERS
NEW ORLEANS DISTRICT
NEW ORLEANS, LOUISIANA

OPERATIONS DIVISION
TECHNICAL SUPPORT BRANCH
CHANNEL SURVEY SECTION

TECHNICIAN: PM, LT
SURVEY VESSEL: OB-169
FREQUENCY: 400 kHz
PROCESSED BY: JH
CHECKED BY: JH

**MISSISSIPPI RIVER
HYDROGRAPHIC SURVEY
NEW ORLEANS HARBOR**

MR_56_NO3 - Sta. 220+00 to 333+10

NOTES:
ALL ELEVATIONS IN FEET AND REFER TO LOW WATER REFERENCE PLANE (LWRP07) RELATIVE TO THE NORTH AMERICAN VERTICAL DATUM OF 1988 (NAVD88). CONTOURS ABOVE AND BELOW LWRP ARE EXPRESSED IN FEET AT 5 FT. INTERVALS. ALL AZIMUTHS ARE GEODETIC AND TURNED CLOCKWISE FROM 0 (TRUE NORTH).

○ DISTANCES ON THE MISSISSIPPI RIVER ARE SHOWN AT 1 MILE INTERVALS.

PROJECTION..... LAMBERT CONFORMAL CONIC
(EX: 30° 28' 0")
SYSTEM..... STATE PLANE, LOUISIANA SOUTH, ZONE 1702
(EX: 715 000)
HORIZONTAL DATUM..... NORTH AMERICAN DATUM 1983 (NAD 83)
VERTICAL DATUM..... LOW WATER REFERENCE PLANE (LWRP07)

LWRP: 0.6
GAGE READING: VRS: 2.27 NAVD88
DATE OF LAST SURVEY: 03 JAN 2025
CODES: MULTIBEAM
SURVEY CONDITION: CALM

FILENAME/SURVEY DATE:
27 JAN 2025

SHEET IDENTIFICATION
56