

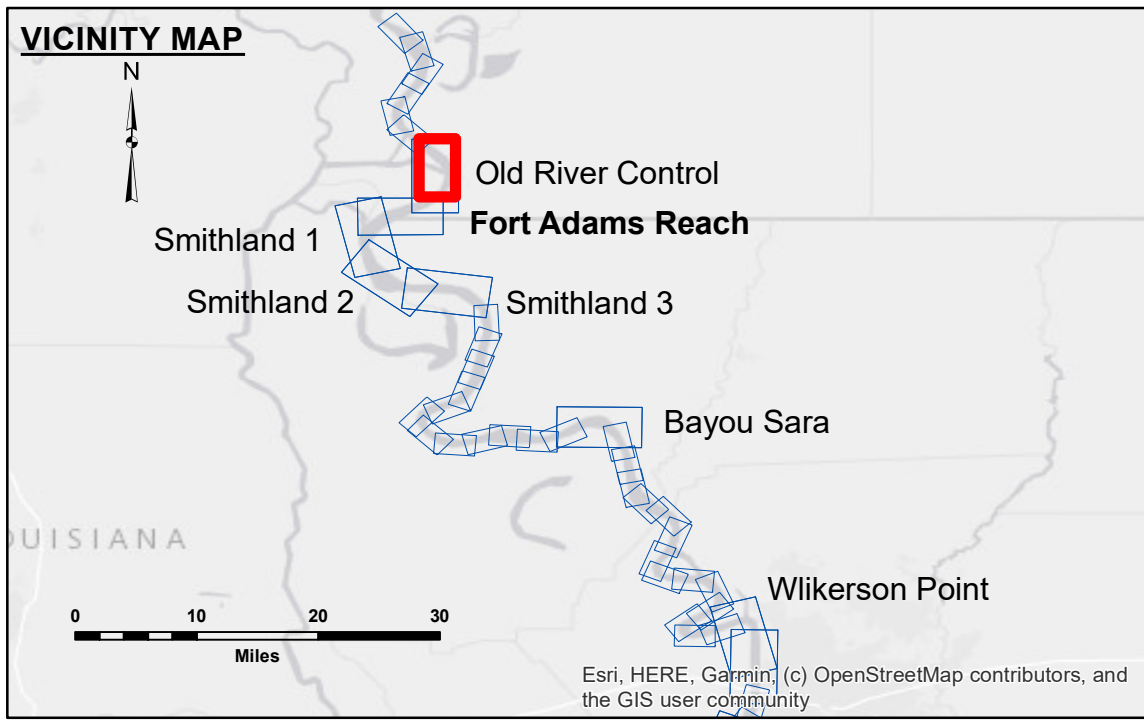


**Access/Access**  
 The United States Government furnishes these data and the recipient accepts and uses them with the express understanding that the data are not to be used for any purpose other than that for which they were originally collected, and that the data are not to be used for any purpose other than that for which they were originally collected, and that the data are not to be used for any purpose other than that for which they were originally collected.

**Disclaimer**  
 The information depicted on this map represents the results of a survey conducted by the U.S. Army Corps of Engineers. The Corps of Engineers does not warrant the accuracy of the information and does not assume any liability for errors or omissions. The information is provided for informational purposes only and should not be used for navigation or other critical applications. The Corps of Engineers does not assume any liability for errors or omissions. The information is provided for informational purposes only and should not be used for navigation or other critical applications.

U.S. ARMY CORPS OF ENGINEERS NEW ORLEANS DISTRICT	
Submitted:	Surveyed By: RYLAND/HOSHMAN
Recommended:	Plotted By: BD
Approved:	Checked By: AC

**MISSISSIPPI RIVER - SHALLOW DRAFT  
 OLD RIVER CONTROL  
 MS\_07\_OLDX\_20191030\_CS  
 30 October 2019**



**LEGEND**

--- Federal Navigation Channel	○ Cable Area	■ Shoaling Area	■ 0' and above
— Federal Navigation Center Line	□ Placement Area	● Shoalest Sounding**	■ 0' to -5'
— As-built Pipeline/Cable	□ Anchorage Area	★ Beacon, General	■ -5' to -9'
..... Unconfirmed Pipeline/Cable	⊗ Obstruction Point	◆ Red Navigation Buoy	□ -9' and below
— Project Depth Contour	⚓ Wrecks-Submerged	◆ Green Navigation Buoy	

**LWRP:** 14.7  
**Gage Reading:** KL:41.8 RR:38.8 USED:41.30 NAVD  
**Sea Conditions:** CALM  
**Vessel Name:** OB-189  
**Survey Type:** CONDITION  
**Sounding Frequency\*\*\*:** HIGH

**Vertical Datum:** Soundings are shown in feet and indicate depths below Low Water Reference Plane 2007 (NAVD).  
 Distances on the Mississippi River, above and below Head of Passes are shown at 1 mile intervals.

The location of navigation aids are base on and provided by the U.S. Coast Guard and USACE crew.  
 2015 Aerial Photography data source: NAIP, USDA-FSA-APFO Aerial Photography Field Office.  
 Reference is USACE IENC U35LM236.  
 \*\*\* Shoalest Sounding per Quarter per Reach.  
 \*\*\* High frequency (200 kHz) survey data represents the first signal return at a sounding location and will include suspended solids, known as "fluff", if present. Low frequency (20 kHz) survey data normally penetrates through this "fluff" layer to depict elevations of consolidated bottom material. Low frequency accuracies may vary depending on channel conditions and fathometer settings.

**Sheet Reference Number  
 7 of 39**

Revision Number:  
 418-20190702