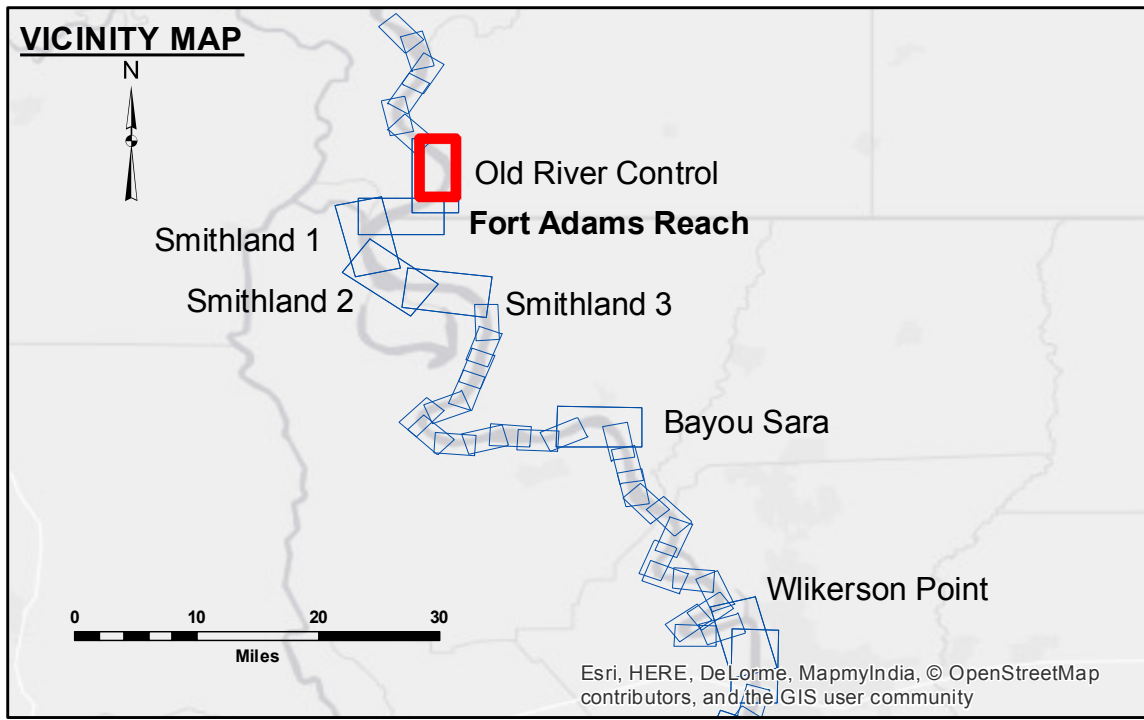


ACCESSORIES
 The United States Government furnishes these data and the recipient accepts and uses them with the express understanding that the Government makes no warranty, expressed or implied, concerning the accuracy, completeness, reliability, usability or suitability for any particular purpose of the information furnished. The user is responsible for the results obtained from the application of the data for other than its intended purpose.
 Data contained in this hydrographic survey data is subject to change without notice due to several factors including but not limited to changing hydrographic conditions, changes in the bathymetry of the river, and the hydrographic conditions which develop after the date of the survey. The information depicted on this map represents the results of a survey conducted on or about the date indicated and is not intended to represent the general condition existing at that time.

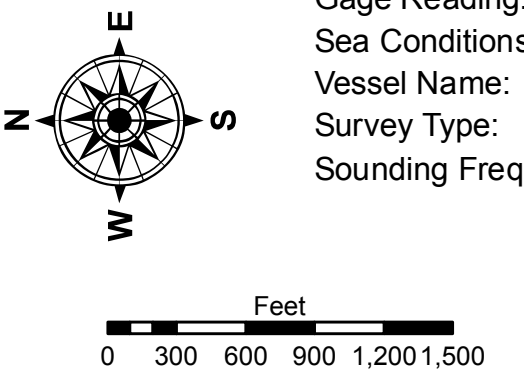
Submitted:	Surveyed By:
Recommended:	DR, JA
Checked:	Plotted By:
Approved:	BTD
	Checked By:
	MSK

MISSISSIPPI RIVER - SHALLOW DRAFT
OLD RIVER CONTROL
MS_07_OLD_20150916
16 September 2015



LEGEND			
--- Federal Navigation Channel	○ Cable Area	■ Shoaling Area	■ 0' and above
— Federal Navigation Center Line	□ Placement Area	● Shoalest Sounding**	■ 0' to -5'
— As-built Pipeline/Cable	□ Anchorage Area	★ Beacon, General	■ -5' to -9'
..... Unconfirmed Pipeline/Cable	⊗ Obstruction Point	◆ Red Navigation Buoy	□ -9' and below
— Project Depth Contour	⚓ Wrecks-Submerged	◆ Green Navigation Buoy	

LWRP: 15.3
 Gage Reading: KNOX LANDING: 25.40 NGVD
 Sea Conditions: CALM
 Vessel Name: M/V OB 189
 Survey Type: CONDITION
 Sounding Frequency***: HIGH



NOTES:
 Horizontal Coordinate System:
 North American Datum of 1983 (NAD83), projected to the State Plane Coordinate System (SPCS), Louisiana South Zone. Distance units in U.S. Survey Feet.
 Vertical Datum:
 Soundings are shown in feet and indicate depths below Low Water Reference Plane 2007 (NGVD).
 Distances on the Mississippi River, above and below Head of Passes are shown at 1 mile intervals.
 The location of navigation aids are base on and provided by the U.S. Coast Guard and USACE crew.
 2010 Aerial Photography data source: NAIP, USDA-FSA-APFO Aerial Photography Field Office.
 Reference is USACE IENC U35LM236.
 *** Shoalest Sounding per Quarter per Reach.
 *** High frequency (200 kHz) survey data represents the first signal return at a sounding location and will include suspended solids, known as "fluff", if present. Low frequency (20 kHz) survey data normally penetrates through this "fluff" layer to depict elevations of consolidated bottom material. Low frequency accuracies may vary depending on channel conditions and bathymeter settings.

Sheet Reference Number
7 of 39