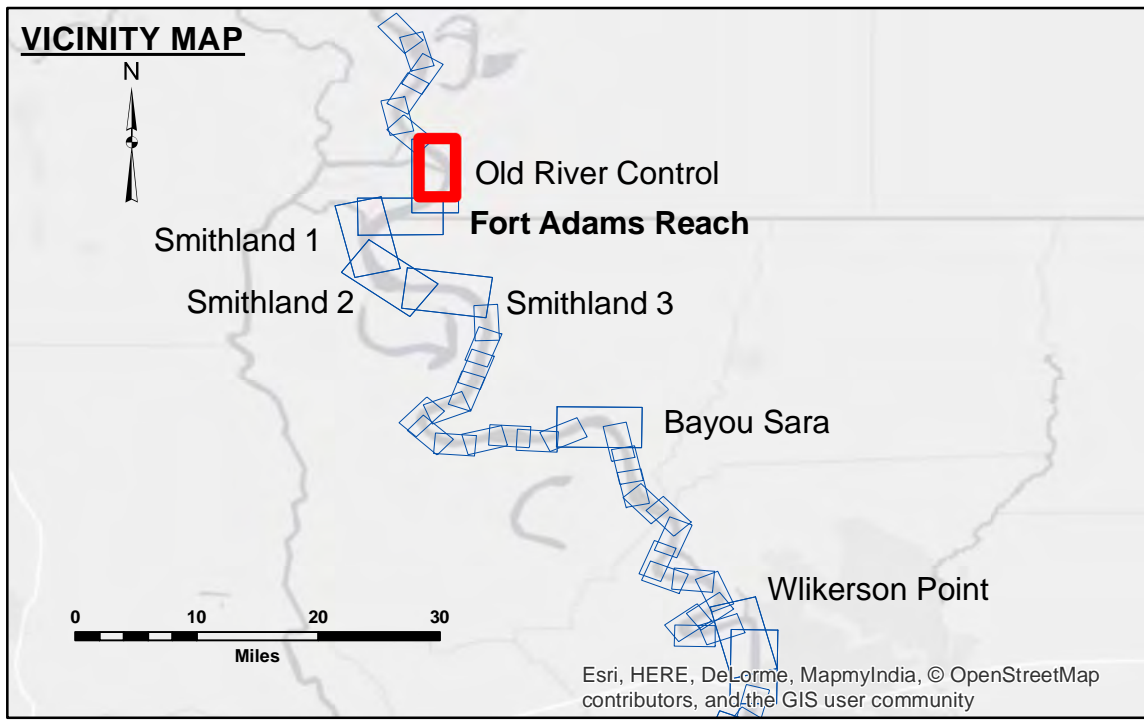


DISCLAIMER
 The information depicted on this map represents the results of a survey conducted by the U.S. Army Corps of Engineers. The data represents the results of data collection for a specific US Army Corps of Engineers project and is only valid for its intended use, control, time and accuracy specifications. The user is responsible for the results of the application of the data for other than its intended purpose.
 Data Collection: Hydrographic survey data is subject to change rapidly due to several factors including but not limited to changing hydrographic conditions when developed after the date of the survey. The user is responsible for the results of the application of the data for other than its intended purpose.
 The information depicted on this map represents the results of a survey conducted by the U.S. Army Corps of Engineers. The data represents the results of data collection for a specific US Army Corps of Engineers project and is only valid for its intended use, control, time and accuracy specifications. The user is responsible for the results of the application of the data for other than its intended purpose.

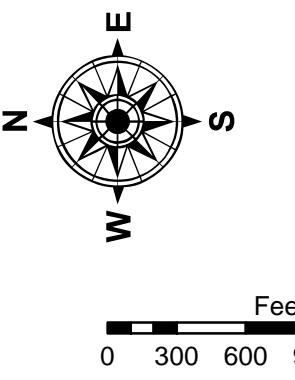
U.S. ARMY CORPS OF ENGINEERS NEW ORLEANS DISTRICT		
Submitted:	Surveyed By: DS/DR	Plotted By: BD
Recommended:	Chief, Survey Section	Checked By: AC
Approved:	Chief, Waterways Maintenance Section	

**MISSISSIPPI RIVER - SHALLOW DRAFT
 OLD RIVER CONTROL
 MS_07_OLD_20171205_CS
 05 December 2017**



LEGEND

--- Federal Navigation Channel	○ Cable Area	■ Shoaling Area	■ 0' and above
— Federal Navigation Center Line	□ Placement Area	● Shoalest Sounding**	■ 0' to -5'
— As-built Pipeline/Cable	□ Anchorage Area	★ Beacon, General	■ -5' to -9'
..... Unconfirmed Pipeline/Cable	⊗ Obstruction Point	◆ Red Navigation Buoy	□ -9' and below
— Project Depth Contour	⚓ Wrecks-Submerged	◆ Green Navigation Buoy	



LWRP: 15.3
 Gage Reading: KNX:28.9 RR:26.5 USED:28.5 NGVD
 Sea Conditions: CHOPPY
 Vessel Name: OB-189
 Survey Type: CONDITION
 Sounding Frequency***: HIGH

NOTES:
 Horizontal Coordinate System: North American Datum of 1983 (NAD83), projected to the State Plane Coordinate System (SPCS), Louisiana South Zone. Distance units in U.S. Survey Feet.
 Vertical Datum: Soundings are shown in feet and indicate depths below Low Water Reference Plane 2007 (NGVD).
 Distances on the Mississippi River, above and below Head of Passes are shown at 1 mile intervals.
 The location of navigation aids are base on and provided by the U.S. Coast Guard and USACE crew.
 2010 Aerial Photography data source: NAIP, USDA-FSA-APFO Aerial Photography Field Office.
 Reference is USACE IENC U35LM236.
 *** Shoalest Sounding per Quarter per Reach.
 *** High frequency (200 kHz) survey data represents the first signal return at a sounding location and will include suspended solids, known as "fluff", if present. Low frequency (20 kHz) survey data normally penetrates through this "fluff" layer to depict elevations of consolidated bottom material. Low frequency accuracies may vary depending on channel conditions and fathometer settings.

**Sheet Reference Number
 7 of 39**