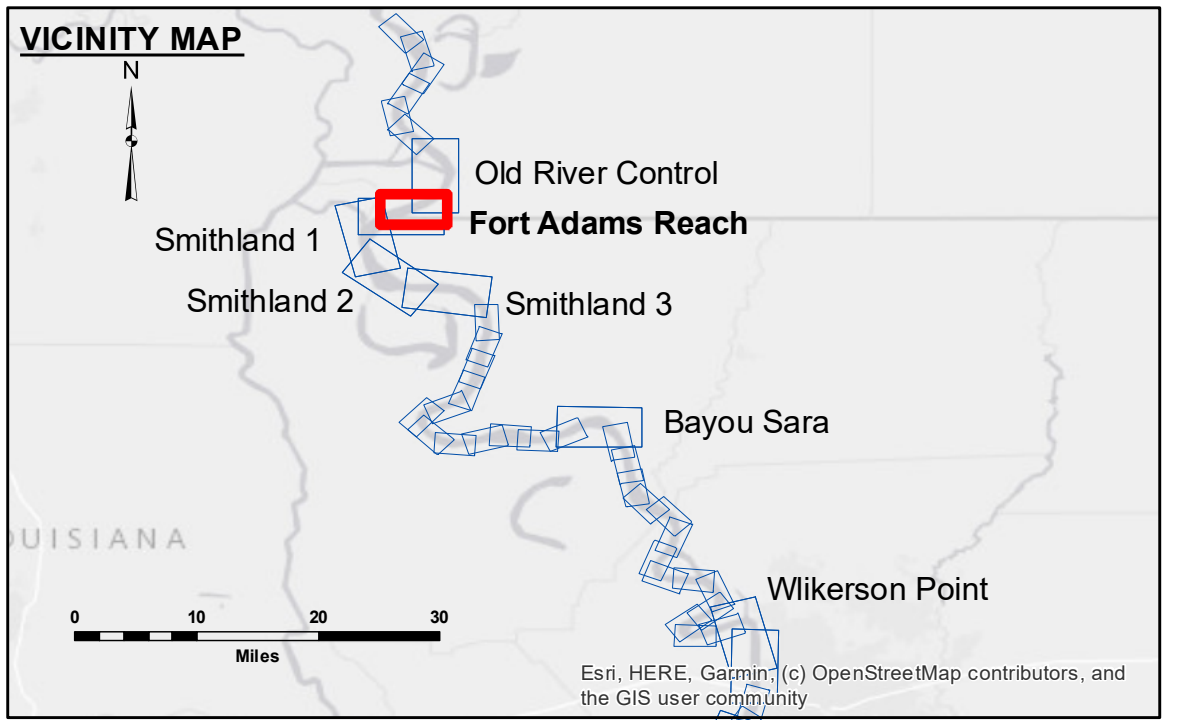


DISCLAIMER: The data represented on this map represents the results of a data collection project for a specific US Army Corps of Engineers project. The data is only valid for its intended use, and its accuracy is not guaranteed. The user is responsible for the results of any application of the data for other than its intended purpose. The application of the data for other than its intended purpose is at the user's risk. The user is responsible for the results of any application of the data for other than its intended purpose. The application of the data for other than its intended purpose is at the user's risk. The user is responsible for the results of any application of the data for other than its intended purpose.

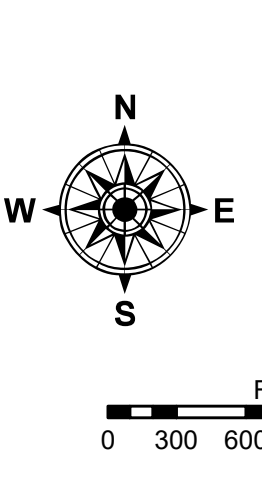
U.S. ARMY CORPS OF ENGINEERS NEW ORLEANS DISTRICT	
Submitted By: RYLAND/RHODEN	Plotted By: JH
Recommended By: Chet, Survey Section	Checked By: JH
Approved By: Chet, Waterways Maintenance Section	

**MISSISSIPPI RIVER - SHALLOW DRAFT
FORT ADAMS REACH
MS_08_FARX_20220517_CS
17 May 2022**



LEGEND

- - - Federal Navigation Channel	○ Cable Area	■ Shoaling Area	■ 0' and above
— Federal Navigation Center Line	□ Placement Area	● Shoalest Sounding**	■ 0' to -5'
— As-built Pipeline/Cable	□ Anchorage Area	☆ Beacon, General	■ -5' to -9'
..... Unconfirmed Pipeline/Cable	⊗ Obstruction Point	◆ Red Navigation Buoy	□ -9' and below
— Project Depth Contour	⚓ Wrecks-Submerged	◆ Green Navigation Buoy	



LWRP: 14.1
 Gage Reading: KL:50.4 RR:48.0 USED:49.00 (NAVD)
 Sea Conditions: CALM
 Vessel Name: M/V OB189
 Survey Type: CONDITION
 Sounding Frequency***: HIGH

NOTES:
 Horizontal Coordinate System:
 North American Datum of 1983 (NAD83), projected to the State Plane Coordinate System (SPCS), Louisiana South Zone. Distance units in U.S. Survey Feet.
 Vertical Datum:
 Soundings are shown in feet and indicate depths below Low Water Reference Plane 2007 (NAVD).
 Distances on the Mississippi River, above and below Head of Passes are shown at 1 mile intervals.
 The location of navigation aids are based on and provided by the U.S. Coast Guard and USACE crew.
 2015 Aerial Photography data source: NAIP, USDA-FSA-APFO Aerial Photography Field Office.
 Reference is USACE IENC U35LM236.
 *** Shoalest Sounding per Quarter per Reach.
 *** High frequency (200 kHz) survey data represents the first signal return at a sounding location and will include suspended solids, known as "fluff", if present. Low frequency (20 kHz) survey data normally penetrates through this "fluff" layer to depict elevations of consolidated bottom material. Low frequency accuracies may vary depending on channel conditions and fathometer settings.

**Sheet Reference Number
8 of 39**