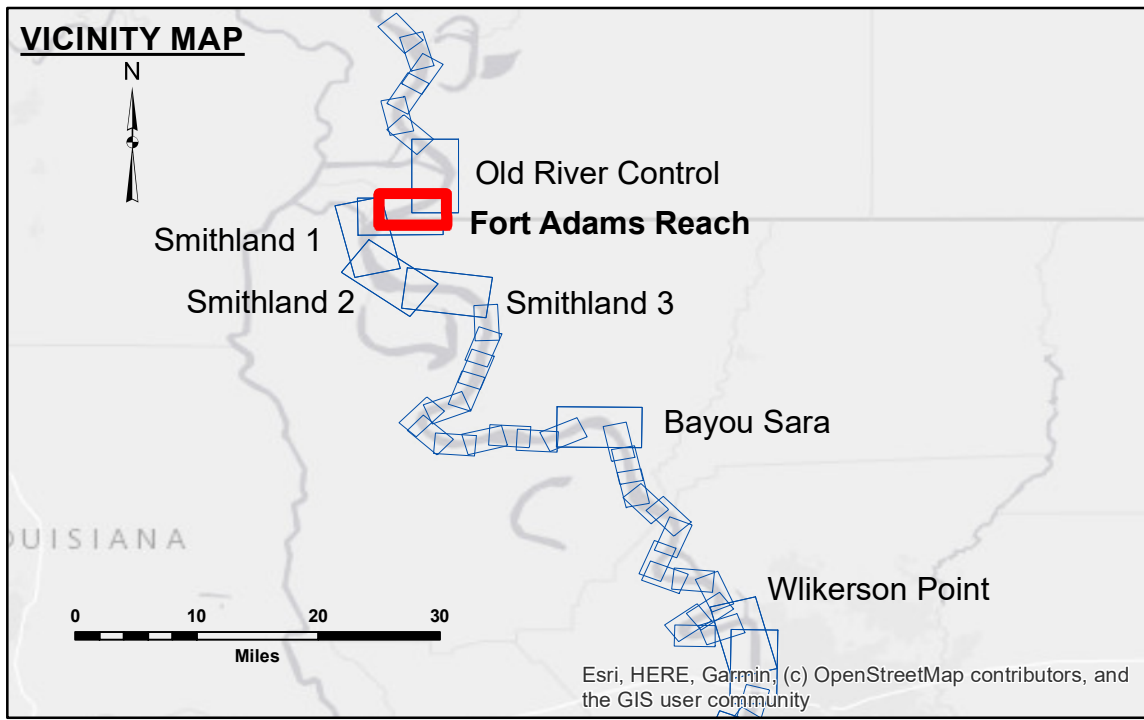


DISCLAIMER
 The information depicted on this map represents the results of a survey conducted under contract to the U.S. Army Corps of Engineers. The data represents the results of data collection/processing for a specific US Army Corps of Engineers project. It is only valid for its intended use, context, time and accuracy specifications. The user is responsible for the results and accuracy of the data. The application of the data for other than its intended purpose is not recommended. Data Constants Hydrographic survey data is subject to change rapidly due to several factors including but not limited to encroaching vegetation, shifting sandbars, and other natural changes in the hydrographical conditions which develop after the date of the survey. The user is responsible for the results of the data when used for other than its intended purpose. The user is responsible for the results of the data when used for other than its intended purpose. The user is responsible for the results of the data when used for other than its intended purpose. The user is responsible for the results of the data when used for other than its intended purpose.

Submitted:	Surveyed By: RYLAND/SIMMONS	Plotted By: BD	Checked By: AD/JH
Recommended:	Chief Survey Section		
Approved:	Chief Waterways Maintenance Section		

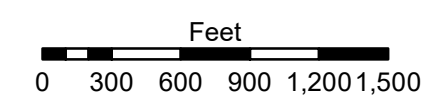
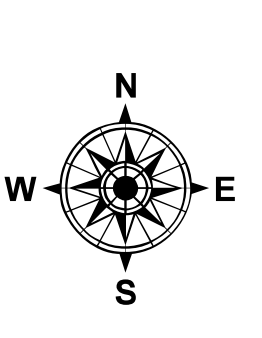
U.S. ARMY CORPS OF ENGINEERS
 NEW ORLEANS DISTRICT

MISSISSIPPI RIVER - SHALLOW DRAFT
FORT ADAMS REACH
MS_08_FARX_20220927_CS
27 September 2022



LEGEND

--- Federal Navigation Channel	○ Cable Area	■ Shoaling Area	■ 0' and above
— Federal Navigation Center Line	□ Placement Area	● Shoalest Sounding**	■ 0' to -5'
— As-built Pipeline/Cable	□ Anchorage Area	☆ Beacon, General	■ -5' to -9'
..... Unconfirmed Pipeline/Cable	⊗ Obstruction Point	◆ Red Navigation Buoy	□ -9' and below
— Project Depth Contour	⚓ Wrecks-Submerged	◆ Green Navigation Buoy	



LWRP: 14.1
 Gage Reading: KL:19.7 RR:17.3 USED:18.40 NAVD
 Sea Conditions: CALM
 Vessel Name: OB-189
 Survey Type: CONDITION
 Sounding Frequency***: HIGH

NOTES:
 Horizontal Coordinate System:
 North American Datum of 1983 (NAD83), projected to the State Plane Coordinate System (SPCS), Louisiana South Zone. Distance units in U.S. Survey Feet.
 Vertical Datum:
 Soundings are shown in feet and indicate depths below Low Water Reference Plane 2007 (NAVD).
 Distances on the Mississippi River, above and below Head of Passes are shown at 1 mile intervals.
 The location of navigation aids are base on and provided by the U.S. Coast Guard and USACE crew.
 2015 Aerial Photography data source: NAIP, USDA-FSA-APFO Aerial Photography Field Office.
 Reference is USACE IENC U35LM236.
 *** Shoalest Sounding per Quarter per Reach.
 *** High frequency (200 kHz) survey data represents the first signal return at a sounding location and will include suspended solids, known as "fluff", if present. Low frequency (20 kHz) survey data normally penetrates through this "fluff" layer to depict elevations of consolidated bottom material. Low frequency accuracies may vary depending on channel conditions and fathometer settings.

Sheet Reference Number
8 of 39
 Revision Number:
 4.2-20200420