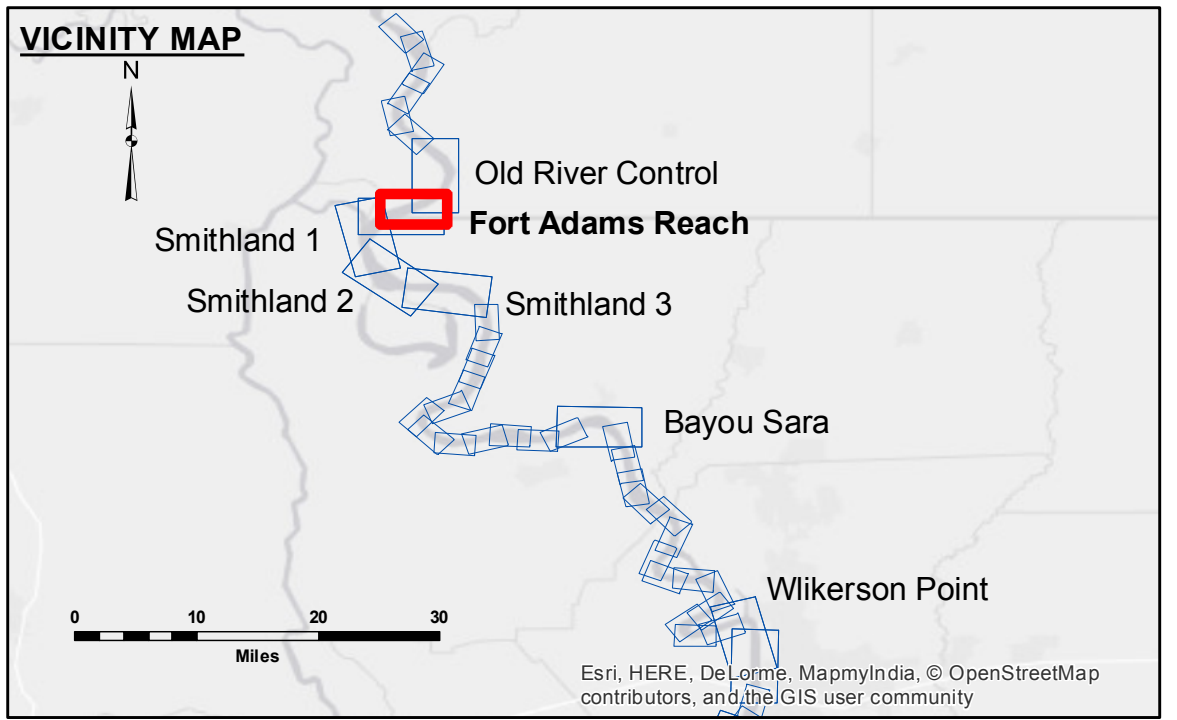


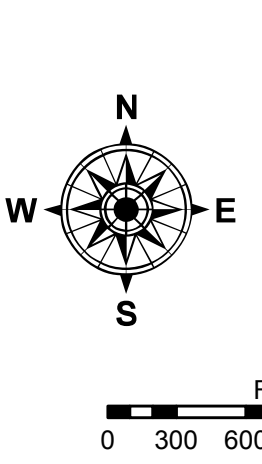
**Access to Information:** The United States Government furnishes this data and the recipient accepts and uses them with the express understanding that the data is provided for informational purposes only and is not to be used for any other purpose. The user is responsible for the reliability, usability or suitability for any particular purpose of the information. The user shall be held responsible for any use of the information under no liability whatsoever to any person by reason of any use made thereof. These data belong to the Government. Therefore the recipient may not transfer, disseminate, or otherwise use these data to others without the express written consent of the U.S. Army Corps of Engineers. The recipient shall be held responsible for changes in the hydrographic conditions which develop after the date of the information depicted on this map represents the results of a survey conducted on the date of the information depicted on this map. The information depicted on this map represents the general condition existing at that time.

U.S. ARMY CORPS OF ENGINEERS NEW ORLEANS DISTRICT		
Submitted:	Surveyed By: DR,JA	Plotted By: BITD
Recommended: Chief, Survey Section	Checked By: MSK	Approved: Chief, Waterways Maintenance Section

**MISSISSIPPI RIVER - SHALLOW DRAFT**  
**FORT ADAMS REACH**  
**MS\_08\_FAR\_20150916**  
**16 September 2015**



LEGEND			
--- Federal Navigation Channel	○ Cable Area	■ Shoaling Area	■ 0' and above
— Federal Navigation Center Line	□ Placement Area	● Shoalest Sounding**	■ 0' to -5'
— As-built Pipeline/Cable	□ Anchorage Area	★ Beacon, General	■ -5' to -9'
..... Unconfirmed Pipeline/Cable	⊗ Obstruction Point	◆ Red Navigation Buoy	□ -9' and below
— Project Depth Contour	⚓ Wrecks-Submerged	◆ Green Navigation Buoy	



LWRP: 14.6  
 Gage Reading: KL:25.05 RR:22.46 USED:23.50 NGVD  
 Sea Conditions: CALM  
 Vessel Name: M/V OB 189  
 Survey Type: CONDITION  
 Sounding Frequency\*\*\*: HIGH

**NOTES:**  
 Horizontal Coordinate System: North American Datum of 1983 (NAD83), projected to the State Plane Coordinate System (SPCS), Louisiana South Zone. Distance units in U.S. Survey Feet.  
 Vertical Datum: Soundings are shown in feet and indicate depths below Low Water Reference Plane 2007 (NGVD).  
 Distances on the Mississippi River, above and below Head of Passes are shown at 1 mile intervals.  
 The location of navigation aids are base on and provided by the U.S. Coast Guard and USACE crew.  
 2010 Aerial Photography data source: NAIP, USDA-FSA-APFO Aerial Photography Field Office.  
 Reference is USACE IENC U35LM236.  
 \*\* Shoalest Sounding per Quarter per Reach.  
 \*\*\* High frequency (200 kHz) survey data represents the first signal return at a sounding location and will include suspended solids, known as "fluff", if present. Low frequency (20 kHz) survey data normally penetrates through this "fluff" layer to depict elevations of consolidated bottom material. Low frequency accuracies may vary depending on channel conditions and bathymeter settings.

**Sheet Reference Number**  
**8 of 39**

Revision Number: 3.8.0-20150202