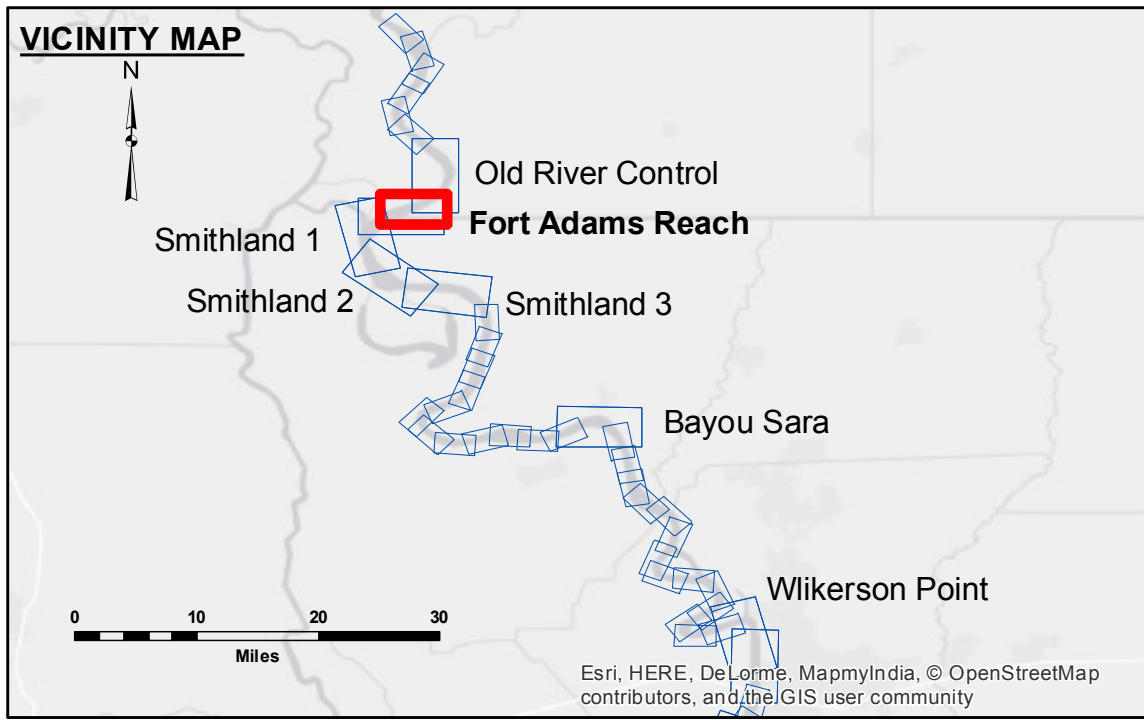


**DISCLAIMER:** The data represented on this map is the result of data collected for a specific project and is not intended for general use. The user is responsible for the accuracy, reliability, and suitability of the data for their intended use. The user is advised to verify the data and accuracy of the data for their intended use. The user is responsible for the accuracy, reliability, and suitability of the data for their intended use. The user is advised to verify the data and accuracy of the data for their intended use.

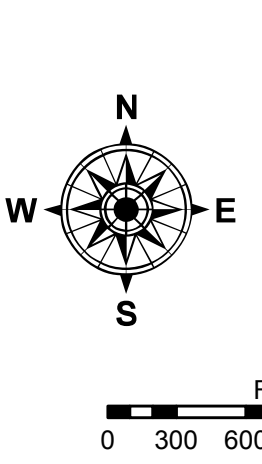
Submitted:	Surveyed By:	PM, JJA
Recommended:	Plotted By:	BTD
Approved:	Checked By:	MSK

U.S. ARMY CORPS OF ENGINEERS  
NEW ORLEANS DISTRICT

**MISSISSIPPI RIVER - SHALLOW DRAFT**  
**FORT ADAMS REACH**  
**MS\_08\_FAR\_20151008**  
**08 October 2015**



LEGEND	
--- Federal Navigation Channel	● Cable Area
— Federal Navigation Center Line	□ Placement Area
— As-built Pipeline/Cable	⊗ Obstruction Point
..... Unconfirmed Pipeline/Cable	★ Beacon, General
— Project Depth Contour	◆ Red Navigation Buoy
	◆ Green Navigation Buoy
	■ Shoaling Area
	● Shoalest Sounding**
	□ 0' and above
	□ 0' to -5'
	□ -5' to -9'
	□ -9' and below



LWRP: 14.6  
 Gage Reading: KL:23.26 RR:20.58 USED:21.70 NGVD  
 Sea Conditions: CALM  
 Vessel Name: OB-167  
 Survey Type: CONDITION  
 Sounding Frequency\*\*\*: HIGH

**NOTES:**  
 Horizontal Coordinate System: North American Datum of 1983 (NAD83), projected to the State Plane Coordinate System (SPCS), Louisiana South Zone. Distance units in U.S. Survey Feet.  
 Vertical Datum: Soundings are shown in feet and indicate depths below Low Water Reference Plane 2007 (NGVD).  
 Distances on the Mississippi River, above and below Head of Passes are shown at 1 mile intervals.  
 The location of navigation aids are based on and provided by the U.S. Coast Guard and USACE crew.  
 2010 Aerial Photography data source: NAIP, USDA-FSA-APFO Aerial Photography Field Office.  
 Reference is USACE IENC U35LM236.  
 \*\*\* Shoalest Sounding per Quarter per Reach.  
 \*\*\* High frequency (200 kHz) survey data represents the first signal return at a sounding location and will include suspended solids, known as "fluff", if present. Low frequency (20 kHz) survey data normally penetrates through this "fluff" layer to depict elevations of consolidated bottom material. Low frequency accuracies may vary depending on channel conditions and bathymeter settings.

**Sheet Reference Number**  
**8 of 39**