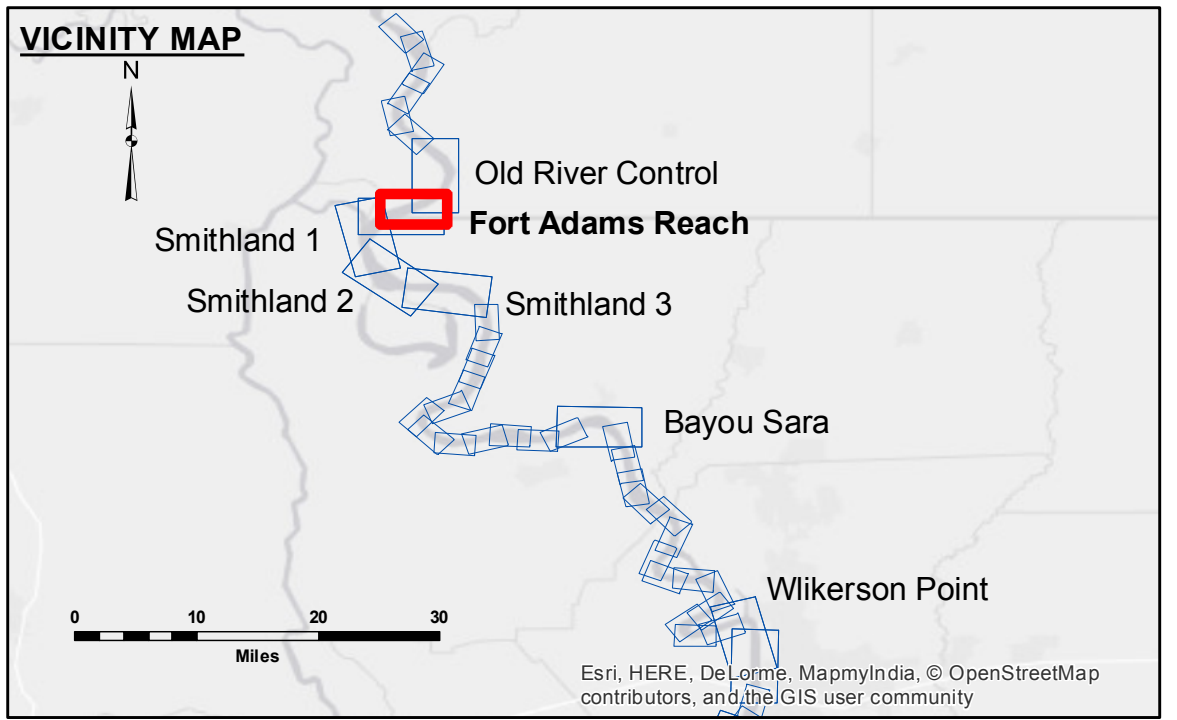


**DISCLAIMER:** The data represents the results of data collection for a specific US Army Corps of Engineers project. The data is not intended for use in any other project or for any other purpose. The user is responsible for the accuracy, reliability, and availability of the data for their intended use. The user is not to be held liable for any damage or loss resulting from the use of this data. The user is not to be held liable for any damage or loss resulting from the use of this data. The user is not to be held liable for any damage or loss resulting from the use of this data.

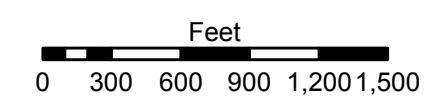
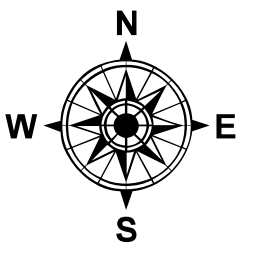
Submitted:	Checked:	Approved:
DR, JA	BITD	MSK
U.S. ARMY CORPS OF ENGINEERS NEW ORLEANS DISTRICT		

**MISSISSIPPI RIVER - SHALLOW DRAFT**  
**FORT ADAMS REACH**  
**MS\_08\_FAR\_20160225**  
**25 February 2016**



LEGEND			
--- Federal Navigation Channel	○ Cable Area	■ Shoaling Area	■ 0' and above
— Federal Navigation Center Line	□ Placement Area	● Shoalest Sounding**	■ 0' to -5'
— As-built Pipeline/Cable	□ Anchorage Area	☆ Beacon, General	■ -5' to -9'
..... Unconfirmed Pipeline/Cable	⊗ Obstruction Point	◆ Red Navigation Buoy	□ -9' and below
— Project Depth Contour	⚓ Wrecks-Submerged	◆ Green Navigation Buoy	

**NOTES:**  
 Horizontal Coordinate System:  
 North American Datum of 1983 (NAD83), projected to the State Plane  
 Coordinate System (SPCS), Louisiana South Zone. Distance units in U.S. Survey Feet.  
 Vertical Datum:  
 Soundings are shown in feet and indicate depths below Low Water Reference Plane 2007 (NGVD).  
 Distances on the Mississippi River, above and below Head of Passes are shown  
 at 1 mile intervals.  
 The location of navigation aids are base on and provided by the U.S. Coast Guard and USACE crew.  
 2010 Aerial Photography data source: NAIP, USDA-FSA-APFO Aerial Photography Field Office.  
 Reference is USACE IENC U35LM236.  
 \*\* Shoalest Sounding per Quarter per Reach.  
 \*\*\* High frequency (200 kHz) survey data represents the first signal return at a sounding  
 location and will include suspended solids, known as "fluff", if present. Low frequency (20 kHz)  
 survey data normally penetrates through this "fluff" layer to depict elevations of consolidated bottom  
 material. Low frequency accuracies may vary depending on channel conditions and bathymeter  
 settings.



**Sheet Reference Number**  
**8 of 39**