

Access/Availability: The United States Government furnishes these data and the recipient accepts and uses them with the express understanding that they are for informational purposes only. The data is not intended for navigation, and the user is responsible for the results of its use. The data is not intended for use in any other manner than that for which it was collected. The user is responsible for the results of its use. The data is not intended for use in any other manner than that for which it was collected. The user is responsible for the results of its use.

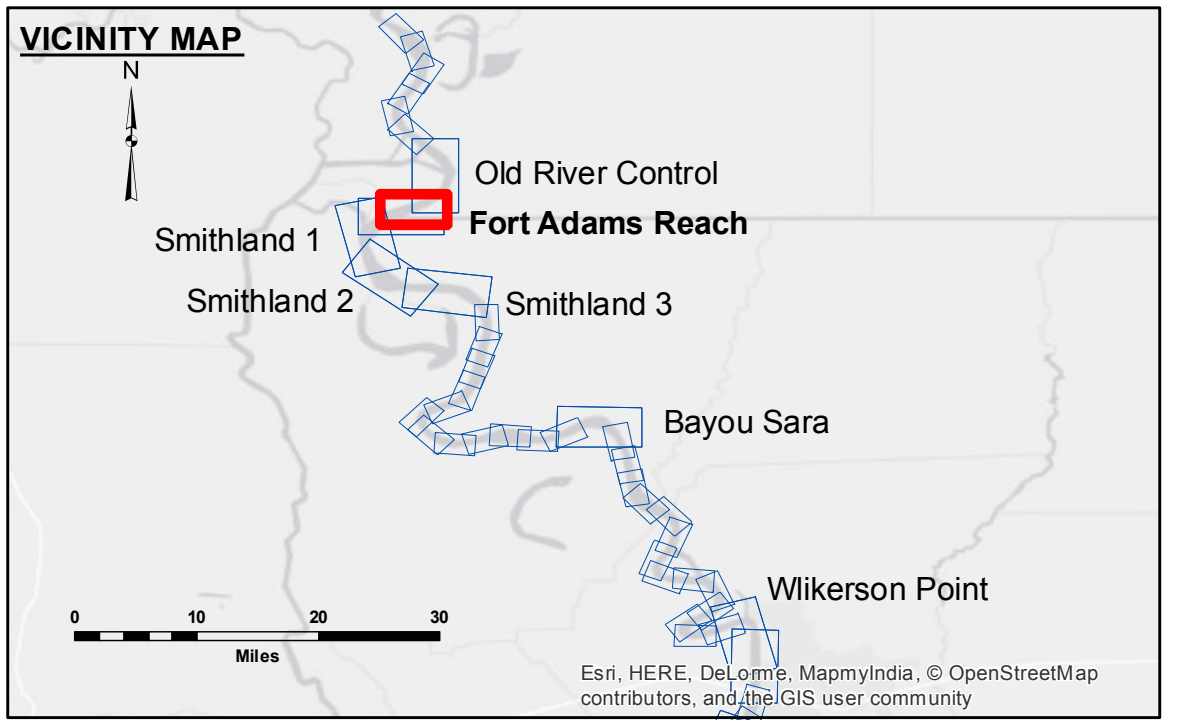
Distribution Liability: The data represents the results of data collection processing for a specific US Army Corps of Engineers project. The data is not intended for use in any other manner than that for which it was collected. The user is responsible for the results of its use. The data is not intended for use in any other manner than that for which it was collected. The user is responsible for the results of its use.

Data Accuracy: Hydrographic survey data is subject to change due to several factors including but not limited to dredging, shoaling, and other changes in the river. The data is not intended for use in any other manner than that for which it was collected. The user is responsible for the results of its use.

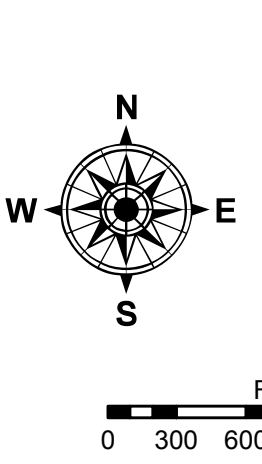
Disclaimer: The information depicted on this map represents the results of a survey conducted on the date of the survey. The data is not intended for use in any other manner than that for which it was collected. The user is responsible for the results of its use.

| | |
|--|---------------------|
| U.S. ARMY CORPS OF ENGINEERS NEW ORLEANS DISTRICT | |
| Submitted: | Checked By: AC |
| Recommended: | Plotted By: AO |
| Approved: | Surveyed By: DR, SP |

MISSISSIPPI RIVER - SHALLOW DRAFT
FORT ADAMS REACH
MS_08_FAR_20161117
17 November 2016



| LEGEND | | | |
|----------------------------------|---------------------|-------------------------|-----------------|
| --- Federal Navigation Channel | ○ Cable Area | ■ Shoaling Area | ■ 0' and above |
| — Federal Navigation Center Line | □ Placement Area | ● Shoalest Sounding** | ■ 0' to -5' |
| — As-built Pipeline/Cable | □ Anchorage Area | ☆ Beacon, General | ■ -5' to -9' |
| Unconfirmed Pipeline/Cable | ⊗ Obstruction Point | ◆ Red Navigation Buoy | □ -9' and below |
| — Project Depth Contour | ⚓ Wrecks-Submerged | ◆ Green Navigation Buoy | |



LWRP: 14.6
 Gage Reading: KL:25.8RR:23.6 USED:24.5 NGVD
 Sea Conditions: CALM
 Vessel Name: M/V OB167
 Survey Type: CONDITION
 Sounding Frequency***: HIGH

NOTES:
 Horizontal Coordinate System:
 North American Datum of 1983 (NAD83), projected to the State Plane Coordinate System (SPCS), Louisiana South Zone. Distance units in U.S. Survey Feet.
 Vertical Datum:
 Soundings are shown in feet and indicate depths below Low Water Reference Plane 2007 (NGVD).
 Distances on the Mississippi River, above and below Head of Passes are shown at 1 mile intervals.
 The location of navigation aids are base on and provided by the U.S. Coast Guard and USACE crew.
 2010 Aerial Photography data source: NAIP, USDA-FSA-APFO Aerial Photography Field Office.
 Reference is USACE IENC U35LM236.
 *** Shoalest Sounding per Quarter per Reach.
 *** High frequency (200 kHz) survey data represents the first signal return at a sounding location and will include suspended solids, known as "fluff", if present. Low frequency (20 kHz) survey data normally penetrates through this "fluff" layer to depict elevations of consolidated bottom material. Low frequency accuracies may vary depending on channel conditions and fathometer settings.

Sheet Reference Number
8 of 39
 Revision Number: 3.8-9-20150202