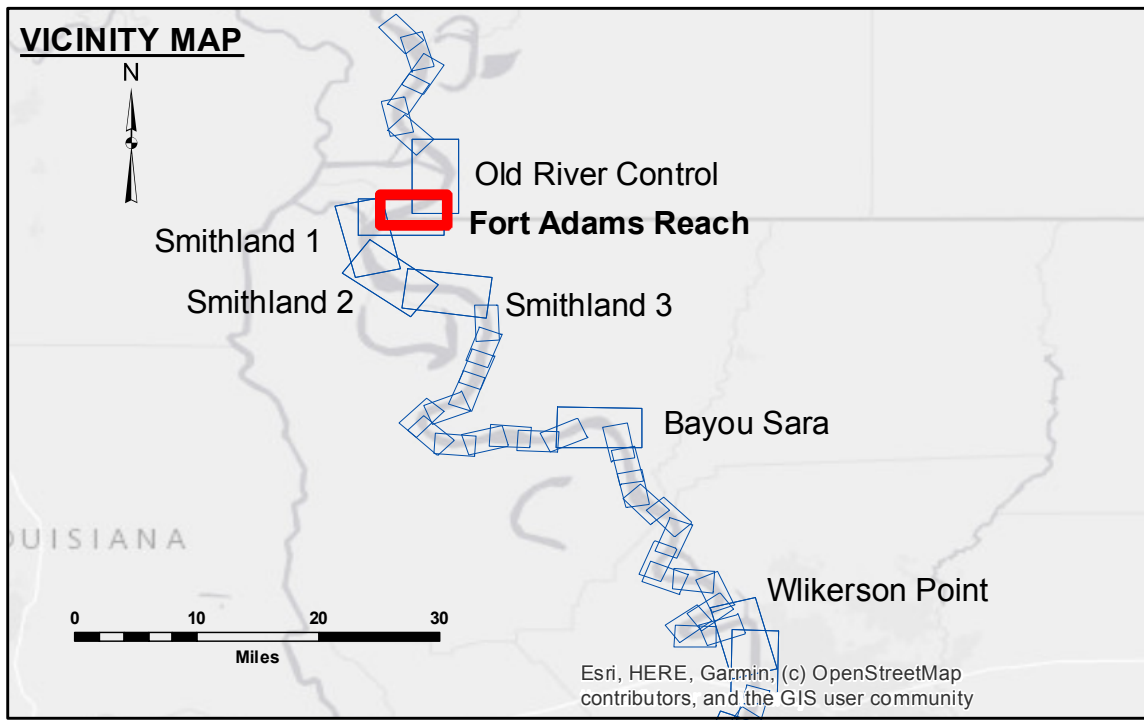




**DISCLAIMER:** The data represented on this map is the result of data collection for a specific US Army Corps of Engineers project. It is not intended for use in any other project. The user is responsible for the results of their use. The application of the data for other than its intended purpose is at the user's risk. Data collected for hydrographic survey data is subject to change rapidly due to several factors including but not limited to dredging, sedimentation, and changes in the hydrographical conditions which develop after the date of the survey. The US Army Corps of Engineers is not responsible for changes in the hydrographical conditions existing at the time of use. Practitioners should not rely solely on this map.

U.S. ARMY CORPS OF ENGINEERS NEW ORLEANS DISTRICT	
Submitted: _____	Surveyed By: RYLAND/ADAMS
Recommended: _____	Plotted By: JH
Approved: _____	Checked By: JH

**MISSISSIPPI RIVER - SHALLOW DRAFT**  
**FORT ADAMS REACH**  
**MS\_08\_FAR\_20220303\_CS**  
**03 March 2022**



LEGEND			
--- Federal Navigation Channel	○ Cable Area	■ Shoaling Area	■ 0' and above
— Federal Navigation Center Line	□ Placement Area	● Shoalest Sounding**	■ 0' to -5'
— As-built Pipeline/Cable	□ Anchorage Area	☆ Beacon, General	■ -5' to -9'
..... Unconfirmed Pipeline/Cable	⊗ Obstruction Point	◆ Red Navigation Buoy	□ -9' and below
— Project Depth Contour	⚓ Wrecks-Submerged	◆ Green Navigation Buoy	

**LWRP:** 14.1  
**Gage Reading:** KL:47.9 RR:45.5 USED:46.50 NAVD  
**Sea Conditions:** CALM  
**Vessel Name:** M/V OB189  
**Survey Type:** CONDITION  
**Sounding Frequency\*\*\*:** HIGH

**NOTES:**  
 Horizontal Coordinate System: North American Datum of 1983 (NAD83), projected to the State Plane Coordinate System (SPCS), Louisiana South Zone. Distance units in U.S. Survey Feet.  
 Vertical Datum: Soundings are shown in feet and indicate depths below Low Water Reference Plane 2007 (NAVD). Distances on the Mississippi River, above and below Head of Passes are shown at 1 mile intervals.  
 The location of navigation aids are base on and provided by the U.S. Coast Guard and USACE crew. 2015 Aerial Photography data source: NAIP, USDA-FSA-APFO Aerial Photography Field Office.  
 Reference is USACE IENC U35LM236.  
 \*\* Shoalest Sounding per Quarter per Reach.  
 \*\*\* High frequency (200 kHz) survey data represents the first signal return at a sounding location and will include suspended solids, known as "fluff", if present. Low frequency (20 kHz) survey data normally penetrates through this "fluff" layer to depict elevations of consolidated bottom material. Low frequency accuracies may vary depending on channel conditions and fathometer settings.

**Sheet Reference Number**  
**8 of 39**