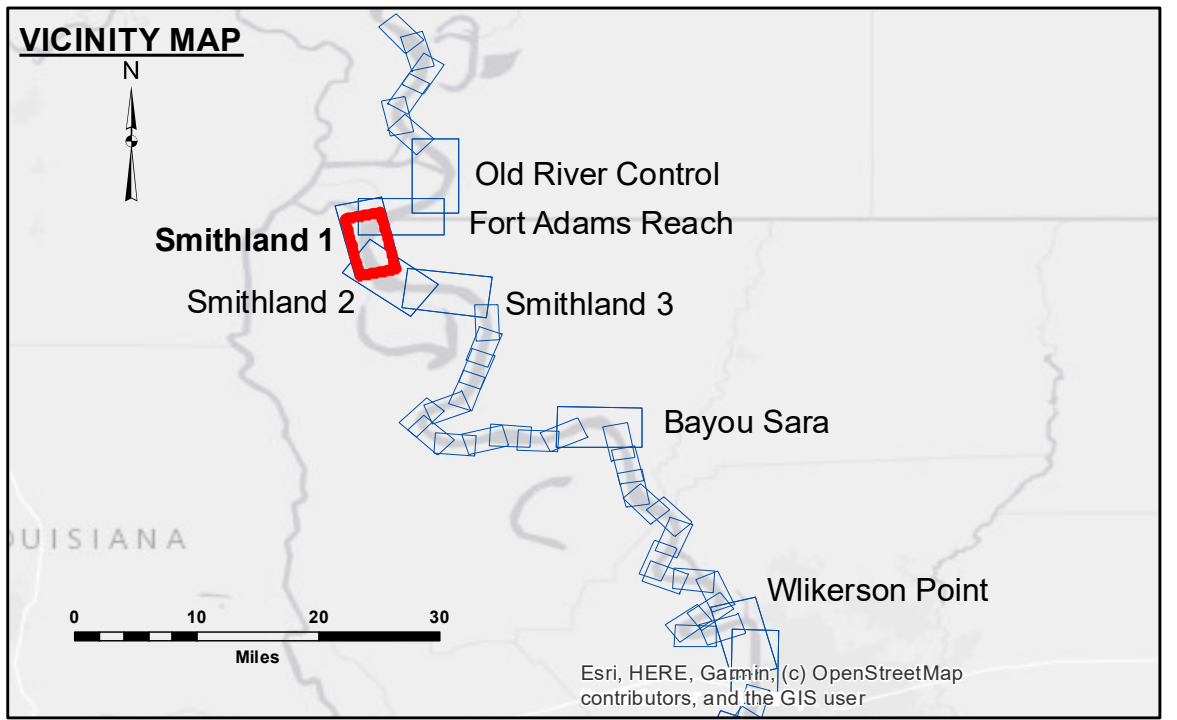


DISCLAIMER: The United States Government furnishes these data and the recipient accepts and uses them with the express understanding that the data are not warranted for any purpose other than that for which they were prepared. The user is responsible for the results of any use of the data for other than its intended purpose. The application of the data for other than its intended purpose may result in injury or damage to persons or property. The user assumes all liability for any use of the data for other than its intended purpose. These data are not to be used for any purpose other than that for which they were prepared. The user assumes all liability for any use of the data for other than its intended purpose. The information depicted on this map represents the results of a survey conducted on the general condition existing at the time of the survey. The Corps of Engineers does not warrant the accuracy of the data for any purpose other than that for which they were prepared. The user assumes all liability for any use of the data for other than its intended purpose.

U.S. ARMY CORPS OF ENGINEERS NEW ORLEANS DISTRICT	
Submitted:	RYLAND/SONNER
Recommended:	BD
Checked:	AC
Approved:	AC

**MISSISSIPPI RIVER - SHALLOW DRAFT
SMITHLAND - SHEET 1
MS_09_SMTX_20210427_CS
27 April 2021**



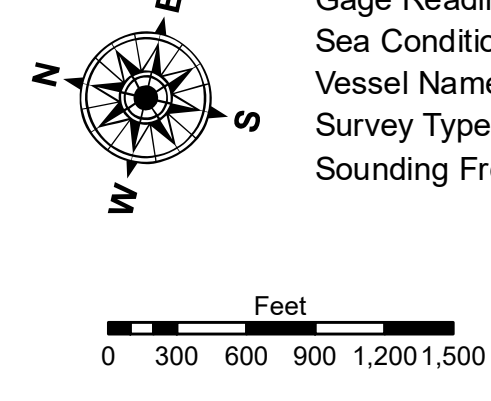
LEGEND	
--- Federal Navigation Channel	○ Cable Area
— Federal Navigation Center Line	□ Placement Area
— As-built Pipeline/Cable	□ Anchorage Area
..... Unconfirmed Pipeline/Cable	⊗ Obstruction Point
— Project Depth Contour	⚓ Wrecks-Submerged
■ Shoaling Area	★ Beacon, General
● Shoalest Sounding**	◆ Red Navigation Buoy
○ 0' and above	◆ Green Navigation Buoy
○ 0' to -5'	
○ -5' to -9'	
○ -9' and below	

LWRP: 13.6
 Gage Reading: RR:50.5 USED:50.8 NAVD
 Sea Conditions: CALM
 Vessel Name: OB-189
 Survey Type: CONDITION
 Sounding Frequency***: HIGH

Vertical Datum:
 Soundings are shown in feet and indicate depths below Low Water Reference Plane 2007 (NAVD).
 Distances on the Mississippi River, above and below Head of Passes are shown at 1 mile intervals.

The location of navigation aids are based on and provided by the U.S. Coast Guard and USACE crew.
 2015 Aerial Photography data source: NAIP, USDA-FSA-APFO Aerial Photography Field Office.
 Reference is USACE IENC U35LM236.
 *** Shoalest Sounding per Quarter per Reach.

*** High frequency (200 kHz) survey data represents the first signal return at a sounding location and will include suspended solids, known as "fluff", if present. Low frequency (20 kHz) survey data normally penetrates through this "fluff" layer to depict elevations of consolidated bottom material. Low frequency accuracies may vary depending on channel conditions and bathymetry settings.



**Sheet Reference Number
9 of 39**