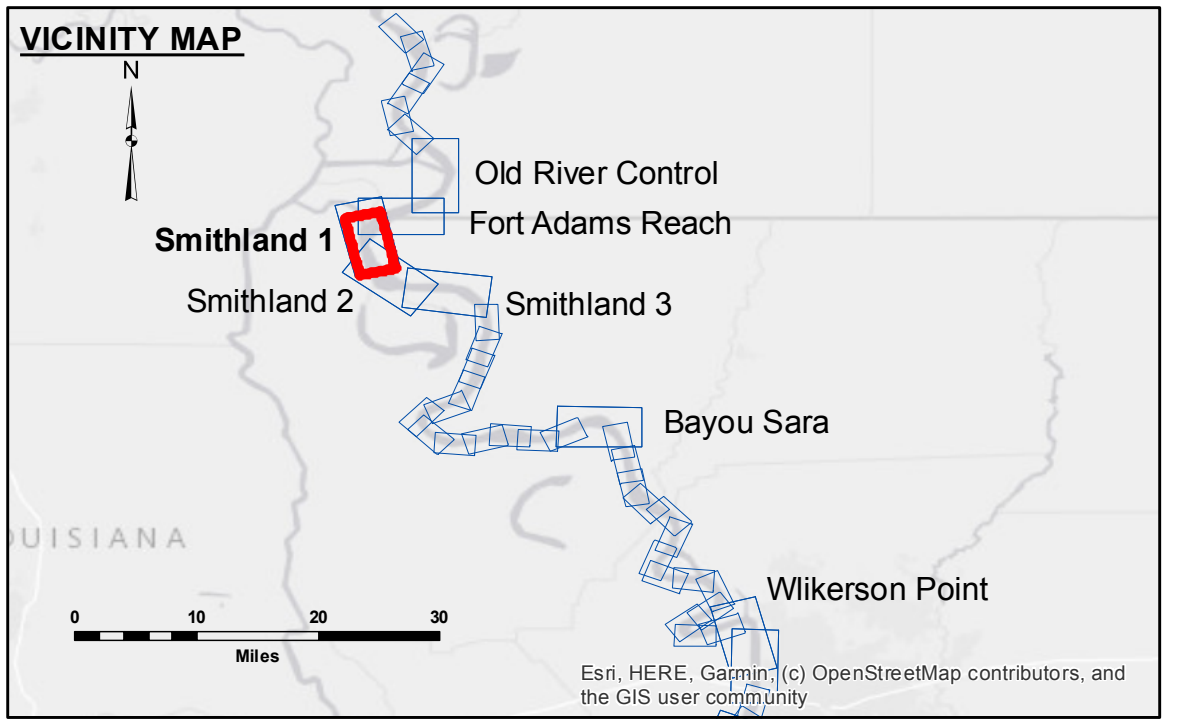


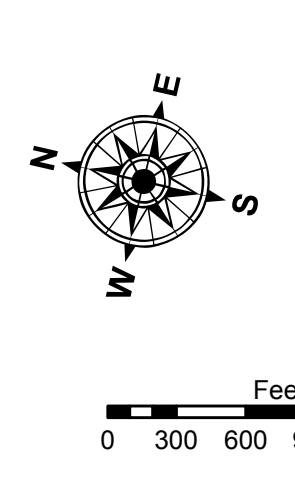
**DISTRIBUTION LIABILITY:** The data represents the results of data collection processing for a specific US Army Corps of Engineers project. It is only valid for its intended use, control, time and accuracy specifications. The user is responsible for the results. The application of the data for other than its intended purpose. Data Constraints: Hydrographic survey data is subject to change due to several factors including but not limited to dredging, channel migration, and other factors. The user is responsible for changes in the hydrographic conditions when developing after the date of the survey. The information depicted on the map represents the results of a survey and should not be used for navigation purposes. The Corps of Engineers is not responsible for the results of a survey conducted by other agencies. The Corps of Engineers is not responsible for the results of a survey conducted by other agencies.

U.S. ARMY CORPS OF ENGINEERS NEW ORLEANS DISTRICT	
Submitted:	RYLAND/SONNIER
Recommended:	Checked By: AO
Approved:	Checked By: AC

**MISSISSIPPI RIVER - SHALLOW DRAFT  
SMITHLAND - SHEET 1  
MS\_09\_SMTX\_20210603\_CS  
03 June 2021**



LEGEND	
--- Federal Navigation Channel	● Cable Area
— Federal Navigation Center Line	□ Placement Area
— As-built Pipeline/Cable	□ Anchorage Area
..... Unconfirmed Pipeline/Cable	⊗ Obstruction Point
— Project Depth Contour	⚓ Wrecks-Submerged
■ Shoaling Area	★ Beacon, General
● Shoalest Sounding**	◆ Red Navigation Buoy
■ 0' and above	◆ Green Navigation Buoy
■ 0' to -5'	
■ -5' to -9'	
■ -9' and below	



LWRP: 13.6  
 Gage Reading: RR:44.2 BR:27.8 USED:44.5 NAVD  
 Sea Conditions: CALM  
 Vessel Name: OB-189  
 Survey Type: CONDITION  
 Sounding Frequency\*\*\*: HIGH

**NOTES:**  
 Horizontal Coordinate System:  
 North American Datum of 1983 (NAD83), projected to the State Plane Coordinate System (SPCS), Louisiana South Zone. Distance units in U.S. Survey Feet.  
 Vertical Datum:  
 Soundings are shown in feet and indicate depths below Low Water Reference Plane 2007 (NAVD).  
 Distances on the Mississippi River, above and below Head of Passes are shown at 1 mile intervals.  
 The location of navigation aids are base on and provided by the U.S. Coast Guard and USACE crew.  
 2015 Aerial Photography data source: NAIP, USDA-FSA-APFO Aerial Photography Field Office.  
 Reference is USACE IENC U35LM236.  
 \*\*\* Shoalest Sounding per Quarter per Reach.  
 \*\*\* High frequency (200 kHz) survey data represents the first signal return at a sounding location and will include suspended solids, known as "fluff", if present. Low frequency (20 kHz) survey data normally penetrates through this "fluff" layer to depict elevations of consolidated bottom material. Low frequency accuracies may vary depending on channel conditions and fathometer settings.

**Sheet Reference Number  
9 of 39**

Revision Number:  
4.1-20191105