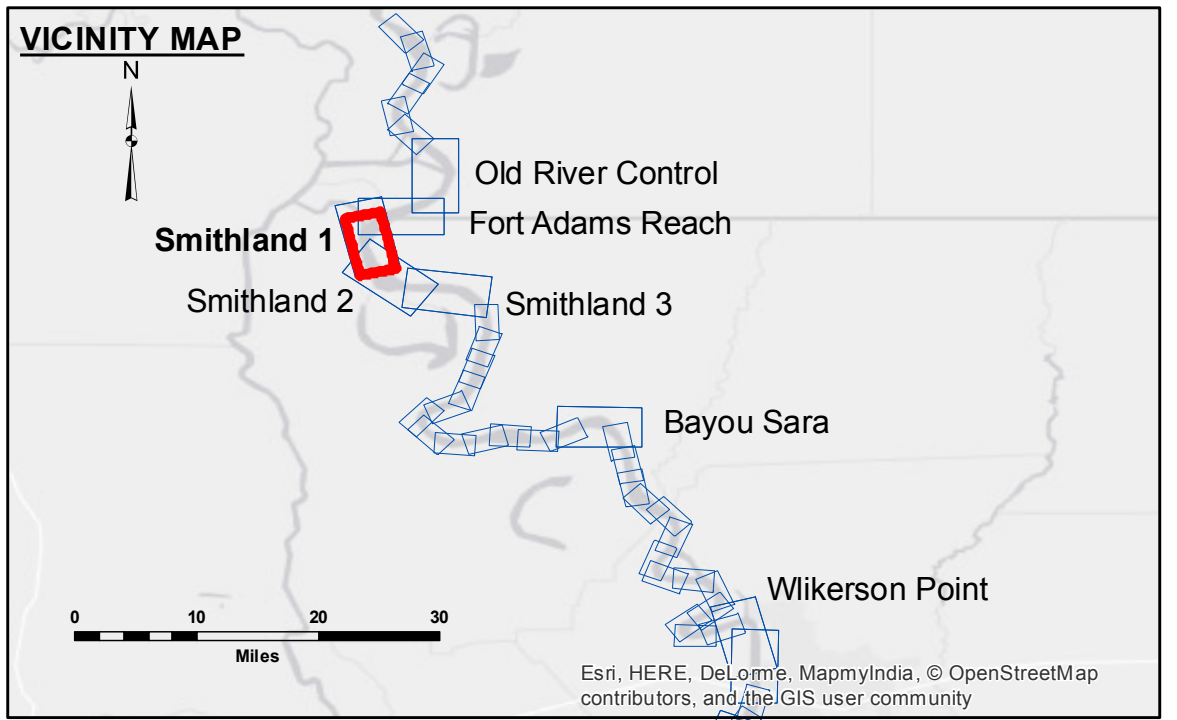


DISCLAIMER: The data represented on this map represents the results of a survey conducted for a specific purpose and is not to be used for any other purpose. The user is responsible for the results of any application of the data for other than its intended purpose. The application of the data for other than its intended purpose may result in injury, death, or property damage. The U.S. Army Corps of Engineers is not responsible for any such consequences. The information depicted on this map represents the results of a survey conducted for a specific purpose and is not to be used for any other purpose. The user is responsible for the results of any application of the data for other than its intended purpose. The application of the data for other than its intended purpose may result in injury, death, or property damage. The U.S. Army Corps of Engineers is not responsible for any such consequences.

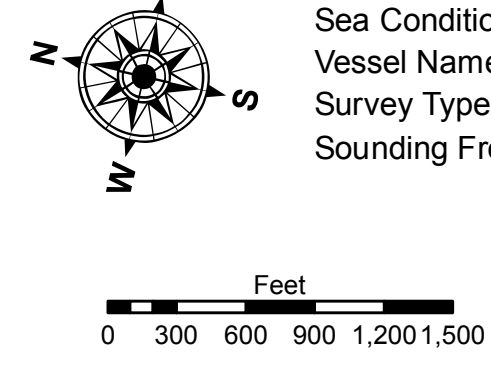
U.S. ARMY CORPS OF ENGINEERS NEW ORLEANS DISTRICT	
Submitted:	Surveyed By: DR,JA
Recommended: Chief, Survey Section	Plotted By: BD
Approved: Chief, Waterways Maintenance Section	Checked By: AC

**MISSISSIPPI RIVER - SHALLOW DRAFT
SMITHLAND - SHEET 1
MS_09_SM1_20160915
15 September 2016**



LEGEND		
--- Federal Navigation Channel	○ Cable Area	■ Shoaling Area
— Federal Navigation Center Line	□ Placement Area	● Shoalest Sounding**
— As-built Pipeline/Cable	⊗ Anchorage Area	★ Beacon, General
..... Unconfirmed Pipeline/Cable	⊗ Obstruction Point	◆ Red Navigation Buoy
— Project Depth Contour	⚓ Wrecks-Submerged	◆ Green Navigation Buoy
		■ 0' and above
		■ 0' to -5'
		■ -5' to -9'
		■ -9' and below

LWRP: 14.2
 Gage Reading: KL:33 RR:30.65 USED:30.60 NGVD
 Sea Conditions: CALM
 Vessel Name: OB-189
 Survey Type: CONDITION
 Sounding Frequency***: HIGH



NOTES:
 Horizontal Coordinate System:
 North American Datum of 1983 (NAD83), projected to the State Plane Coordinate System (SPCS), Louisiana South Zone. Distance units in U.S. Survey Feet.
 Vertical Datum:
 Soundings are shown in feet and indicate depths below Low Water Reference Plane 2007 (NGVD).
 Distances on the Mississippi River, above and below Head of Passes are shown at 1 mile intervals.
 The location of navigation aids are based on and provided by the U.S. Coast Guard and USACE crew.
 2010 Aerial Photography data source: NAIP, USDA-FSA-APFO Aerial Photography Field Office.
 Reference is USACE IENC U35LM236.
 *** Shoalest Sounding per Quarter per Reach.
 *** High frequency (200 kHz) survey data represents the first signal return at a sounding location and will include suspended solids, known as "fluff", if present. Low frequency (20 kHz) survey data normally penetrates through this "fluff" layer to depict elevations of consolidated bottom material. Low frequency accuracies may vary depending on channel conditions and fathometer settings.

**Sheet Reference Number
9 of 39**