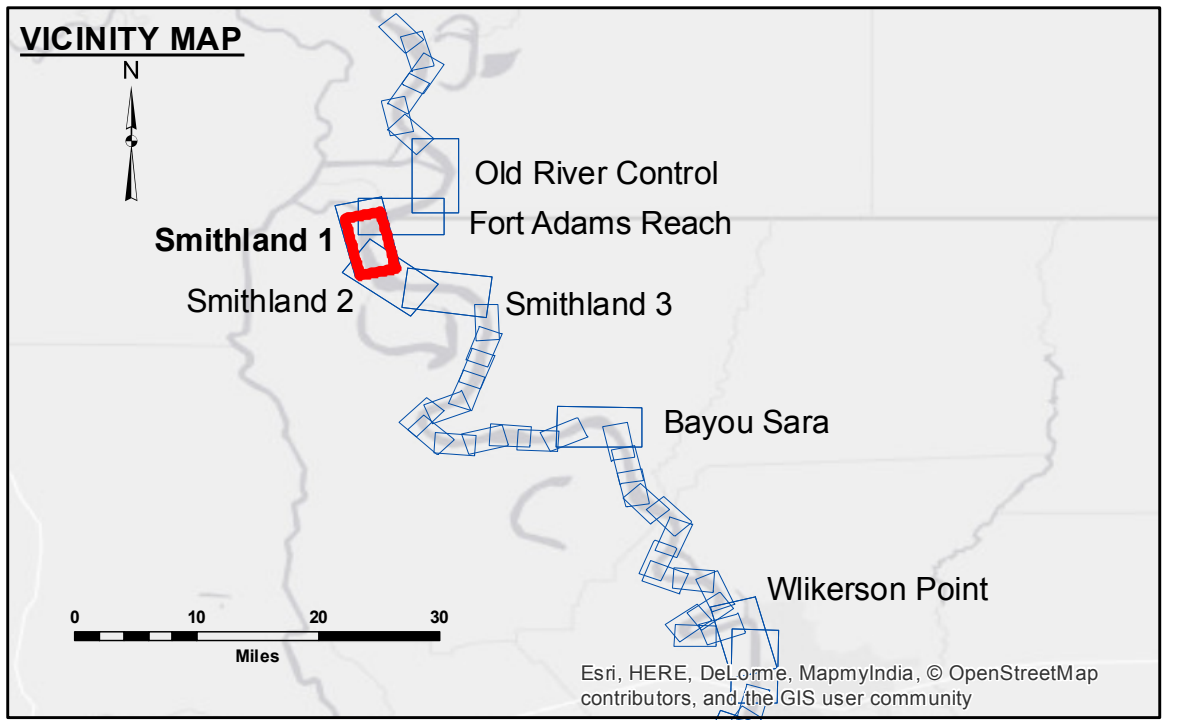


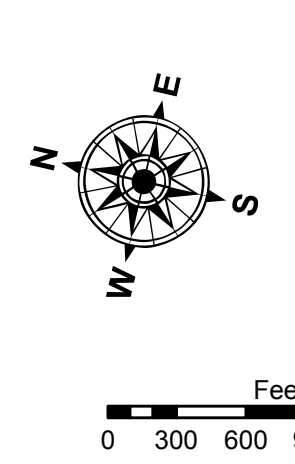
DISCLAIMER: The data represents the results of data collection processing for a specific US Army Corps of Engineers project. The data is not intended for use in any other project. The user is responsible for the results of any application of the data for other than its intended purpose. The application of the data for other than its intended purpose may result in errors. The user is responsible for the results of any application of the data for other than its intended purpose. The user is responsible for the results of any application of the data for other than its intended purpose. The user is responsible for the results of any application of the data for other than its intended purpose.

Submitted By:	RYLAND/RHODEN
Recommended By:	Chief, Survey Section
Approved By:	Chief, Waterways Maintenance Section
Submitted:	
Plotted By:	AO
Checked By:	AO

**MISSISSIPPI RIVER - SHALLOW DRAFT
SMITHLAND - SHEET 1
MS_09_SM1_20161213
13 December 2016**



LEGEND	
--- Federal Navigation Channel	● Cable Area
— Federal Navigation Center Line	■ Placement Area
— As-built Pipeline/Cable	□ Anchorage Area
..... Unconfirmed Pipeline/Cable	⊗ Obstruction Point
— Project Depth Contour	⚓ Wrecks-Submerged
■ Shoaling Area	★ Beacon, General
● Shoalest Sounding**	◆ Red Navigation Buoy
★ Beacon, General	◆ Green Navigation Buoy
■ 0' and above	
■ 0' to -5'	
■ -5' to -9'	
■ -9' and below	



LWRP: 14.2
 Gage Reading: RR:26.8 BR:12.5 USED:27.0 NGVD
 Sea Conditions: CALM
 Vessel Name: M/V OB189
 Survey Type: CONDITION
 Sounding Frequency***: HIGH

NOTES:
 Horizontal Coordinate System: North American Datum of 1983 (NAD83), projected to the State Plane Coordinate System (SPCS), Louisiana South Zone. Distance units in U.S. Survey Feet.
 Vertical Datum: Soundings are shown in feet and indicate depths below Low Water Reference Plane 2007 (NGVD).
 Distances on the Mississippi River, above and below Head of Passes are shown at 1 mile intervals.
 The location of navigation aids are base on and provided by the U.S. Coast Guard and USACE crew.
 2010 Aerial Photography data source: NAIP, USDA-FSA-APFO Aerial Photography Field Office.
 Reference is USACE IENC U35LM236.
 ** Shoalest Sounding per Quarter per Reach.
 *** High frequency (200 kHz) survey data represents the first signal return at a sounding location and will include suspended solids, known as "fluff", if present. Low frequency (20 kHz) survey data normally penetrates through this "fluff" layer to depict elevations of consolidated bottom material. Low frequency accuracies may vary depending on channel conditions and fathometer settings.

**Sheet Reference Number
9 of 39**