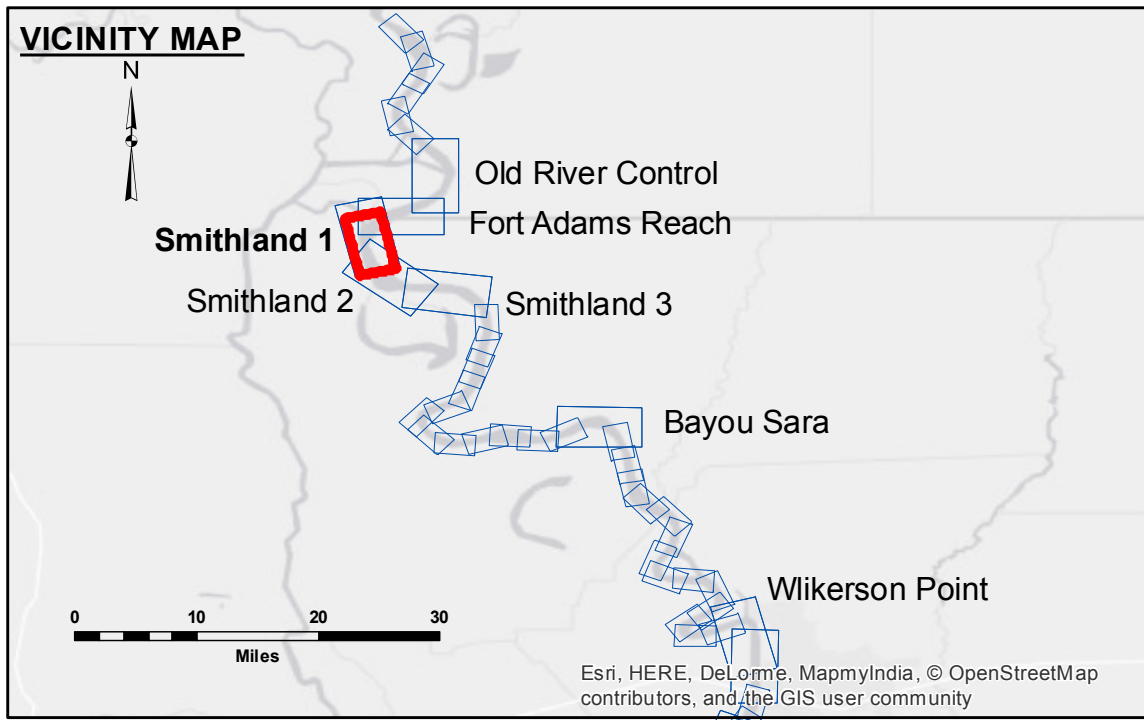


DISCLAIMER: The data represented on this map represents the results of a data collection project for a specific US Army Corps of Engineers project. The data is only valid for its intended use, and its accuracy is not guaranteed. The user is responsible for the results of any application of the data for other than its intended purpose. The application of the data for other than its intended purpose may result in errors and/or omissions. The user is responsible for the results of any application of the data for other than its intended purpose. The user is responsible for the results of any application of the data for other than its intended purpose. The user is responsible for the results of any application of the data for other than its intended purpose.

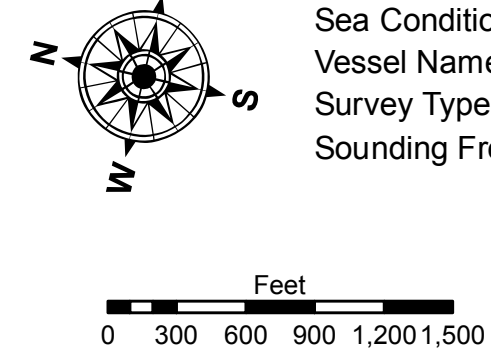
U.S. ARMY CORPS OF ENGINEERS NEW ORLEANS DISTRICT		
Submitted:	Surveyed By: DS/PS	Plotted By: BD
Recommended:	Chief, Survey Section	Checked By: AC
Approved:	Chief, Waterways Maintenance Section	

**MISSISSIPPI RIVER - SHALLOW DRAFT
SMITHLAND - SHEET 1
MS_09_SM1_20170228
28 February 2017**



LEGEND	
--- Federal Navigation Channel	● Cable Area
— Federal Navigation Center Line	■ Placement Area
— As-built Pipeline/Cable	□ Anchorage Area
..... Unconfirmed Pipeline/Cable	⊗ Obstruction Point
— Project Depth Contour	⚓ Wrecks-Submerged
■ Shoaling Area	★ Beacon, General
● Shoalest Sounding**	◆ Red Navigation Buoy
★ Beacon, General	◆ Green Navigation Buoy
■ 0' and above	
■ 0' to -5'	
■ -5' to -9'	
■ -9' and below	

LWRP: 14.2
Gage Reading: BR:17.2 RR:31.8 USED:32.0 NGVD
Sea Conditions: ROUGH
Vessel Name: OB-189
Survey Type: CONDITION
Sounding Frequency*:** HIGH



NOTES:
 Horizontal Coordinate System:
 North American Datum of 1983 (NAD83), projected to the State Plane Coordinate System (SPCS), Louisiana South Zone. Distance units in U.S. Survey Feet.
 Vertical Datum:
 Soundings are shown in feet and indicate depths below Low Water Reference Plane 2007 (NGVD).
 Distances on the Mississippi River, above and below Head of Passes are shown at 1 mile intervals.
 The location of navigation aids are base on and provided by the U.S. Coast Guard and USACE crew.
 2010 Aerial Photography data source: NAIP, USDA-FSA-APFO Aerial Photography Field Office.
 Reference is USACE IENC U35LM236.
 ** Shoalest Sounding per Quarter per Reach.
 *** High frequency (200 kHz) survey data represents the first signal return at a sounding location and will include suspended solids, known as "fluff", if present. Low frequency (20 kHz) survey data normally penetrates through this "fluff" layer to depict elevations of consolidated bottom material. Low frequency accuracies may vary depending on channel conditions and fathometer settings.

**Sheet Reference Number
9 of 39**