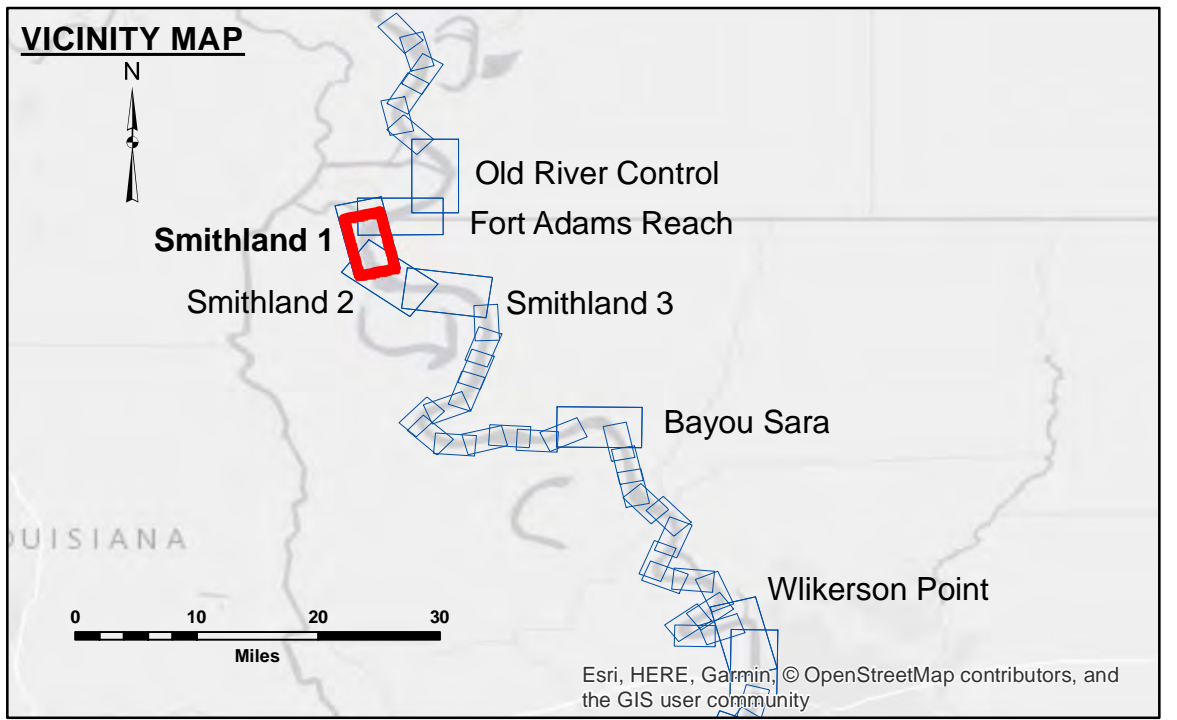




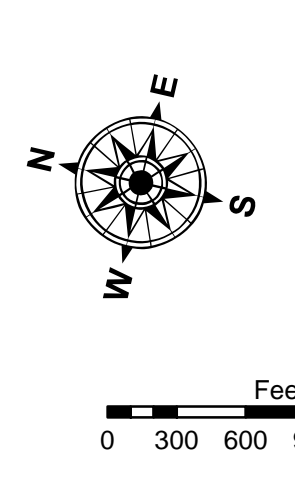
**DISTRIBUTION LIABILITY:** The data represents the results of data collection/processing for a specific US Army Corps of Engineers project. It is only valid for its intended use, content, time and accuracy specifications. The user is responsible for the results of their use. The application of the data for other than its intended purpose is at the user's risk. Data Constants: Hydrographic survey data is subject to change due to several factors including but not limited to changing hydrographic conditions which develop after the date of the survey. The Corps of Engineers accepts no responsibility for changes in the hydrographic conditions when developed after the date of the survey. The information depicted on this map represents the results of a survey and is not to be used for navigation purposes. The Corps of Engineers is not responsible for the results of a survey when used for navigation purposes. The Corps of Engineers is not responsible for the results of a survey when used for navigation purposes. The Corps of Engineers is not responsible for the results of a survey when used for navigation purposes.

U.S. ARMY CORPS OF ENGINEERS NEW ORLEANS DISTRICT	
Submitted:	RYLAND/SOUKI
Recommended:	Chief, Survey Section
Approved:	Chief, Waterways Maintenance Section
Surveyed By:	RYLAND/SOUKI
Plotted By:	BD
Checked By:	AC

**MISSISSIPPI RIVER - SHALLOW DRAFT  
SMITHLAND - SHEET 1  
MS\_09\_SM1\_20190509\_CS  
09 May 2019**



LEGEND	
--- Federal Navigation Channel	○ Cable Area
— Federal Navigation Center Line	□ Placement Area
— As-built Pipeline/Cable	□ Anchorage Area
..... Unconfirmed Pipeline/Cable	⊗ Obstruction Point
— Project Depth Contour	⚓ Wrecks-Submerged
■ Shoaling Area	★ Beacon, General
● Shoalest Sounding**	◆ Red Navigation Buoy
■ 0' and above	◆ Green Navigation Buoy
■ 0' to -5'	
■ -5' to -9'	
■ -9' and below	



LWRP: 14.2  
 Gage Reading: KL:62.12 RR:59.25 USED:59.50 NGVD  
 Sea Conditions: CALM  
 Vessel Name: OB-189  
 Survey Type: CONDITION  
 Sounding Frequency\*\*\*: HIGH

**NOTES:**  
 Horizontal Coordinate System: North American Datum of 1983 (NAD83), projected to the State Plane Coordinate System (SPCS), Louisiana South Zone. Distance units in U.S. Survey Feet.  
 Vertical Datum: Soundings are shown in feet and indicate depths below Low Water Reference Plane 2007 (NGVD).  
 Distances on the Mississippi River, above and below Head of Passes are shown at 1 mile intervals.  
 The location of navigation aids are based on and provided by the U.S. Coast Guard and USACE crew.  
 2015 Aerial Photography data source: NAIP, USDA-FSA-APFO Aerial Photography Field Office.  
 Reference is USACE IENC U35LM236.  
 \*\*\* Shoalest Sounding per Quarter per Reach.  
 \*\*\* High frequency (200 kHz) survey data represents the first signal return at a sounding location and will include suspended solids, known as "fluff", if present. Low frequency (20 kHz) survey data normally penetrates through this "fluff" layer to depict elevations of consolidated bottom material. Low frequency accuracies may vary depending on channel conditions and fathometer settings.

**Sheet Reference Number  
9 of 39**