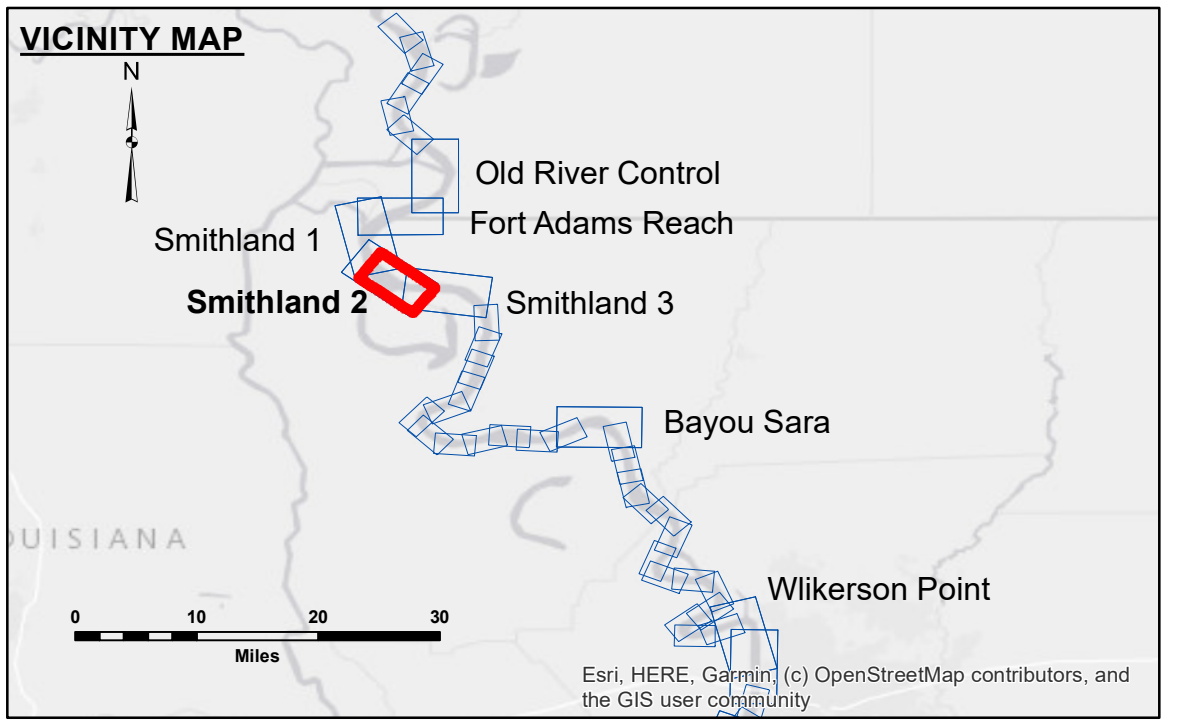


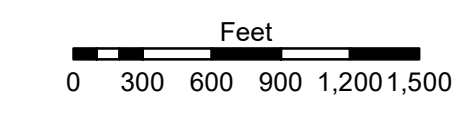
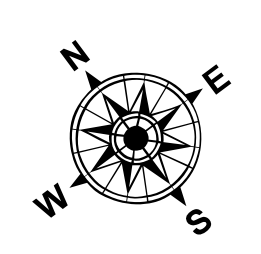
**DISCLAIMER**  
 The information depicted on this map represents the results of a survey conducted by the United States Government. The user is responsible for the accuracy, completeness, reliability, usability, or suitability for any particular purpose of the information. The user is responsible for the accuracy, completeness, reliability, usability, or suitability for any particular purpose of the information. The user is responsible for the accuracy, completeness, reliability, usability, or suitability for any particular purpose of the information. The user is responsible for the accuracy, completeness, reliability, usability, or suitability for any particular purpose of the information.

U.S. ARMY CORPS OF ENGINEERS NEW ORLEANS DISTRICT		
Submitted:	Surveyed By: RYLAND/SIMMONS	Plotted By: BD
Recommended:	Chief, Survey Section	Checked By: AOJH
Approved:	Chief, Waterways Maintenance Section	

**MISSISSIPPI RIVER - SHALLOW DRAFT  
 SMITHLAND - SHEET 2  
 MS\_10\_SM2X\_20250220\_CS  
 20 February 2025**



LEGEND			
--- Federal Navigation Channel	○ Cable Area	■ Shoaling Area	■ 0' and above
— Federal Navigation Center Line	□ Placement Area	● Shoalest Sounding**	■ 0' to -5'
— As-built Pipeline/Cable	□ Anchorage Area	☆ Beacon, General	■ -5' to -9'
..... Unconfirmed Pipeline/Cable	⊗ Obstruction Point	◆ Red Navigation Buoy	□ -9' and below
— Project Depth Contour	⚓ Wrecks-Submerged	◆ Green Navigation Buoy	



LWRP: 12.7  
 Gage Reading: RR:45.9 SF:35.9 USED:44.90 NAVD  
 Sea Conditions: CALM.  
 Vessel Name: OB-189  
 Survey Type: CS  
 Sounding Frequency\*\*\*: HIGH

**NOTES:**  
 Horizontal Coordinate System:  
 North American Datum of 1983 (NAD83), projected to the State Plane Coordinate System (SPCS), Louisiana South Zone. Distance units in U.S. Survey Feet.  
 Vertical Datum:  
 Soundings are shown in feet and indicate depths below Low Water Reference Plane 2007 (NAVD).  
 Distances on the Mississippi River, above and below Head of Passes are shown at 1 mile intervals.  
 The location of navigation aids are base on and provided by the U.S. Coast Guard and USACE crew.  
 2015 Aerial Photography data source: NAIP, USDA-FSA-APFO Aerial Photography Field Office.  
 Reference is USACE IENC U35LM236.  
 \*\* Shoalest Sounding per Quarter per Reach.  
 \*\*\* High frequency (200 kHz) survey data represents the first signal return at a sounding location and will include suspended solids, known as "fluff", if present. Low frequency (20 kHz) survey data normally penetrates through this "fluff" layer to depict elevations of consolidated bottom material. Low frequency accuracies may vary depending on channel conditions and fathometer settings.

**Sheet Reference Number  
 10 of 39**

Revision Number:  
 4-2-2024(42)