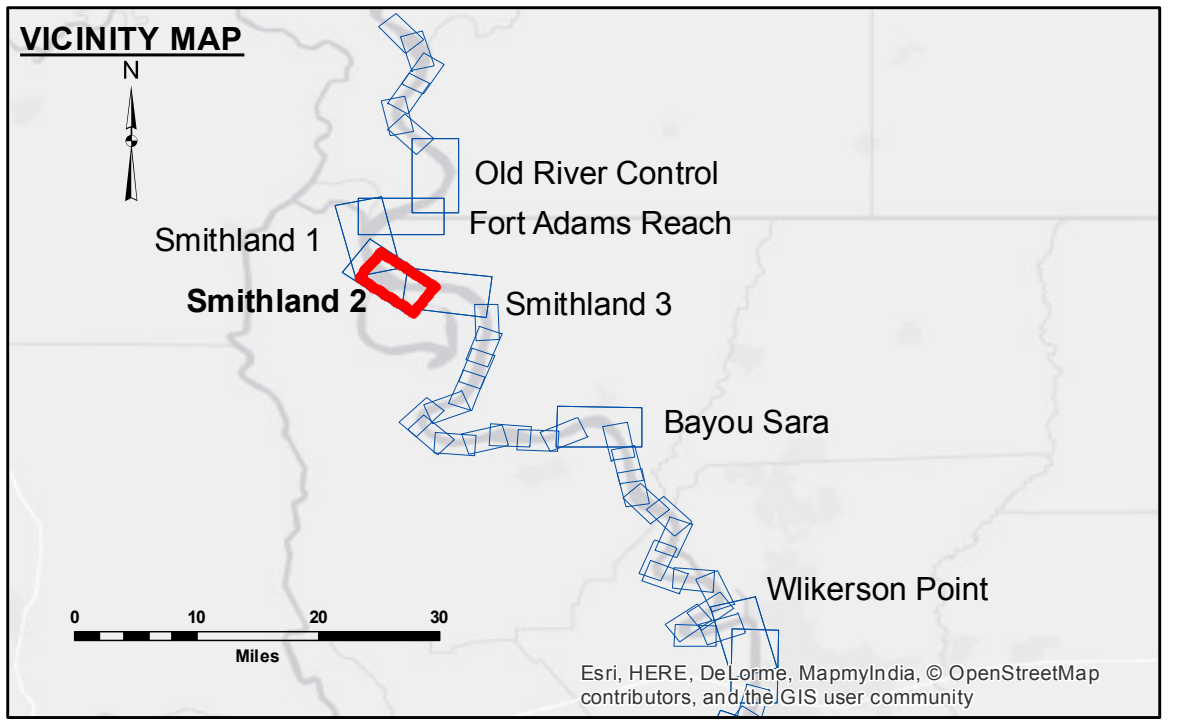


**DISCLAIMER**  
 The information depicted on this map represents the results of a data collection project for a specific US Army Corps of Engineers project. The data is not intended for use in any other project or for any purpose other than that for which it was collected. The user is responsible for the accuracy, reliability, usability, or suitability of the data for their intended use. The user is responsible for the accuracy, reliability, usability, or suitability of the data for their intended use. The user is responsible for the accuracy, reliability, usability, or suitability of the data for their intended use.

Submitted:	DR, JA
Recommended:	BTD
Approved:	MSK

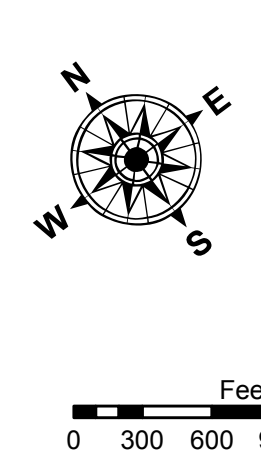
U.S. ARMY CORPS OF ENGINEERS  
 NEW ORLEANS DISTRICT

**MISSISSIPPI RIVER - SHALLOW DRAFT  
 SMITHLAND - SHEET 2  
 MS\_10\_SM2\_20160224  
 24 February 2016**



**LEGEND**

--- Federal Navigation Channel	○ Cable Area	■ Shoaling Area	■ 0' and above
— Federal Navigation Center Line	□ Placement Area	● Shoalest Sounding**	■ 0' to -5'
— As-built Pipeline/Cable	□ Anchorage Area	☆ Beacon, General	■ -5' to -9'
..... Unconfirmed Pipeline/Cable	⊗ Obstruction Point	◆ Red Navigation Buoy	□ -9' and below
— Project Depth Contour	⚓ Wrecks-Submerged	◆ Green Navigation Buoy	



LWRP: 13.1  
 Gage Reading: RR:43.85 BR:28.3 USED:43.20 NGVD  
 Sea Conditions: CALM  
 Vessel Name: OB-189  
 Survey Type: CONDITION  
 Sounding Frequency\*\*\*: HIGH

**NOTES:**  
 Horizontal Coordinate System: North American Datum of 1983 (NAD83), projected to the State Plane Coordinate System (SPCS), Louisiana South Zone. Distance units in U.S. Survey Feet.  
 Vertical Datum: Soundings are shown in feet and indicate depths below Low Water Reference Plane 2007 (NGVD).  
 Distances on the Mississippi River, above and below Head of Passes are shown at 1 mile intervals.  
 The location of navigation aids are base on and provided by the U.S. Coast Guard and USACE crew.  
 2010 Aerial Photography data source: NAIP, USDA-FSA-APFO Aerial Photography Field Office.  
 Reference is USACE IENC U35LM236.  
 \*\* Shoalest Sounding per Quarter per Reach.  
 \*\*\* High frequency (200 kHz) survey data represents the first signal return at a sounding location and will include suspended solids, known as "fluff", if present. Low frequency (20 kHz) survey data normally penetrates through this "fluff" layer to depict elevations of consolidated bottom material. Low frequency accuracies may vary depending on channel conditions and bathymeter settings.

**Sheet Reference Number  
 10 of 39**

Revision Number:  
 3.8-0-20150202