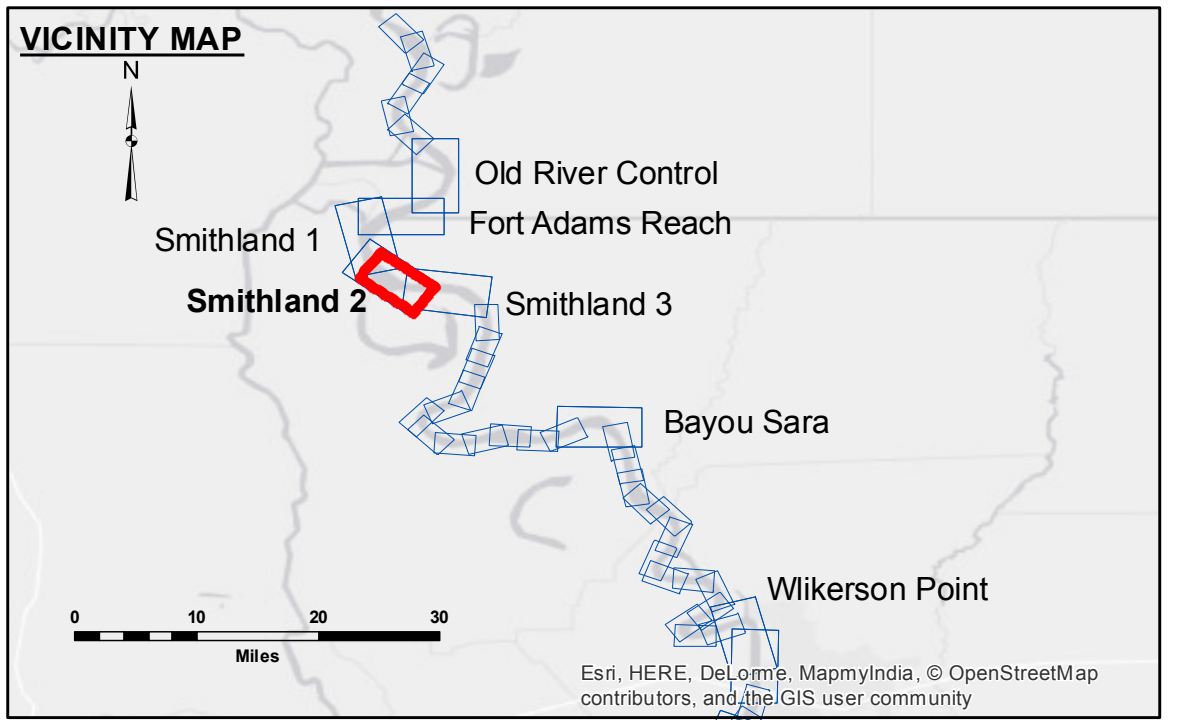


DISCLAIMER
 The information depicted on this map represents the results of a data collection project. The data represents the results of data collection processing for a specific US Army Corps of Engineers project. It is not intended for use in any other project or for any other purpose. The user is responsible for the results of any use of this information. The application of the data for other than its intended purpose is not supported. The information depicted on this map represents the results of a data collection project. The data represents the results of data collection processing for a specific US Army Corps of Engineers project. It is not intended for use in any other project or for any other purpose. The user is responsible for the results of any use of this information. The application of the data for other than its intended purpose is not supported.

Submitted:	DR, JA
Recommended:	BD
Approved:	AC

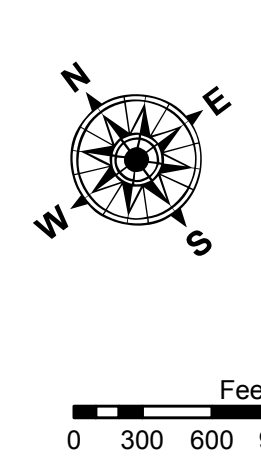
U.S. ARMY CORPS OF ENGINEERS
 NEW ORLEANS DISTRICT

**MISSISSIPPI RIVER - SHALLOW DRAFT
 SMITHLAND - SHEET 2
 MS_10_SM2_20160914
 14 September 2016**



LEGEND

--- Federal Navigation Channel	○ Cable Area	■ Shoaling Area	■ 0' and above
— Federal Navigation Center Line	□ Placement Area	● Shoalest Sounding**	■ 0' to -5'
— As-built Pipeline/Cable	□ Anchorage Area	☆ Beacon, General	■ -5' to -9'
..... Unconfirmed Pipeline/Cable	⊗ Obstruction Point	◆ Red Navigation Buoy	□ -9' and below
— Project Depth Contour	⚓ Wrecks-Submerged	◆ Green Navigation Buoy	



LWRP: 13.1
 Gage Reading: RR:30.75 BR:16.05 USED:30.30 NGVD
 Sea Conditions: CALM
 Vessel Name: OB-189
 Survey Type: CONDITION
 Sounding Frequency***: HIGH

NOTES:
 Horizontal Coordinate System: North American Datum of 1983 (NAD83), projected to the State Plane Coordinate System (SPCS), Louisiana South Zone. Distance units in U.S. Survey Feet.
 Vertical Datum: Soundings are shown in feet and indicate depths below Low Water Reference Plane 2007 (NGVD).
 Distances on the Mississippi River, above and below Head of Passes are shown at 1 mile intervals.
 The location of navigation aids are base on and provided by the U.S. Coast Guard and USACE crew.
 2010 Aerial Photography data source: NAIP, USDA-FSA-APFO Aerial Photography Field Office.
 Reference is USACE IENC U35LM236.
 ** Shoalest Sounding per Quarter per Reach.
 *** High frequency (200 kHz) survey data represents the first signal return at a sounding location and will include suspended solids, known as "fluff", if present. Low frequency (20 kHz) survey data normally penetrates through this "fluff" layer to depict elevations of consolidated bottom material. Low frequency accuracies may vary depending on channel conditions and fathometer settings.

**Sheet Reference Number
 10 of 39**

Revision Number:
 3.8.9-20150202