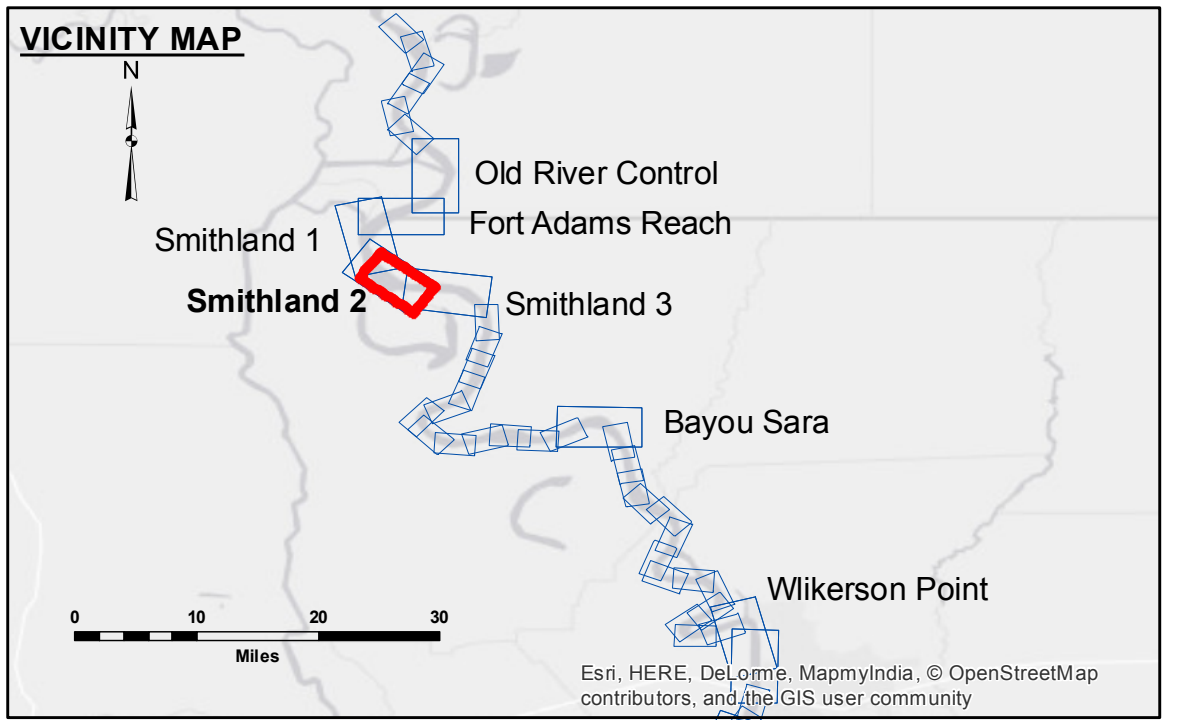


**DISCLAIMER:** The data represents the results of data collection processing for a specific US Army Corps of Engineers project. The data is not intended for use in any other application. The user is responsible for the results. The application of the data for other than its intended purpose is at the user's risk. The user is responsible for the results. The application of the data for other than its intended purpose is at the user's risk. The user is responsible for the results. The application of the data for other than its intended purpose is at the user's risk.

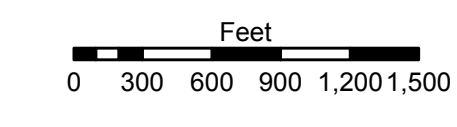
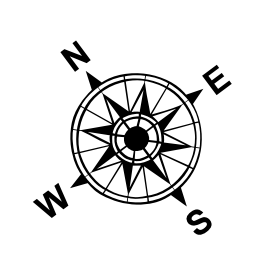
Submitted:	Surveyed By:	RYLAND/ADAMS
Recommended:	Plotted By:	BD
Approved:	Checked By:	AC

U.S. ARMY CORPS OF ENGINEERS  
NEW ORLEANS DISTRICT

**MISSISSIPPI RIVER - SHALLOW DRAFT  
SMITHLAND - SHEET 2  
MS\_10\_SM2\_20170112  
12 January 2017**



LEGEND			
--- Federal Navigation Channel	○ Cable Area	■ Shoaling Area	■ 0' and above
— Federal Navigation Center Line	□ Placement Area	● Shoalest Sounding**	■ 0' to -5'
— As-built Pipeline/Cable	□ Anchorage Area	☆ Beacon, General	■ -5' to -9'
..... Unconfirmed Pipeline/Cable	⊗ Obstruction Point	◆ Red Navigation Buoy	□ -9' and below
— Project Depth Contour	⚓ Wrecks-Submerged	◆ Green Navigation Buoy	



LWRP: 13.1  
Gage Reading: RR:34.35 BR:20.05 USED:33.80 NGVD  
Sea Conditions: CALM  
Vessel Name: OB-189  
Survey Type: CONDITION  
Sounding Frequency\*\*\*: HIGH

**NOTES:**  
Horizontal Coordinate System: North American Datum of 1983 (NAD83), projected to the State Plane Coordinate System (SPCS), Louisiana South Zone. Distance units in U.S. Survey Feet.  
Vertical Datum: Soundings are shown in feet and indicate depths below Low Water Reference Plane 2007 (NGVD).  
Distances on the Mississippi River, above and below Head of Passes are shown at 1 mile intervals.  
The location of navigation aids are base on and provided by the U.S. Coast Guard and USACE crew.  
2010 Aerial Photography data source: NAIP, USDA-FSA-APFO Aerial Photography Field Office.  
Reference is USACE IENC U35LM236.  
\*\* Shoalest Sounding per Quarter per Reach.  
\*\*\* High frequency (200 kHz) survey data represents the first signal return at a sounding location and will include suspended solids, known as "fluff", if present. Low frequency (20 kHz) survey data normally penetrates through this "fluff" layer to depict elevations of consolidated bottom material. Low frequency accuracies may vary depending on channel conditions and fathometer settings.

**Sheet Reference Number  
10 of 39**