

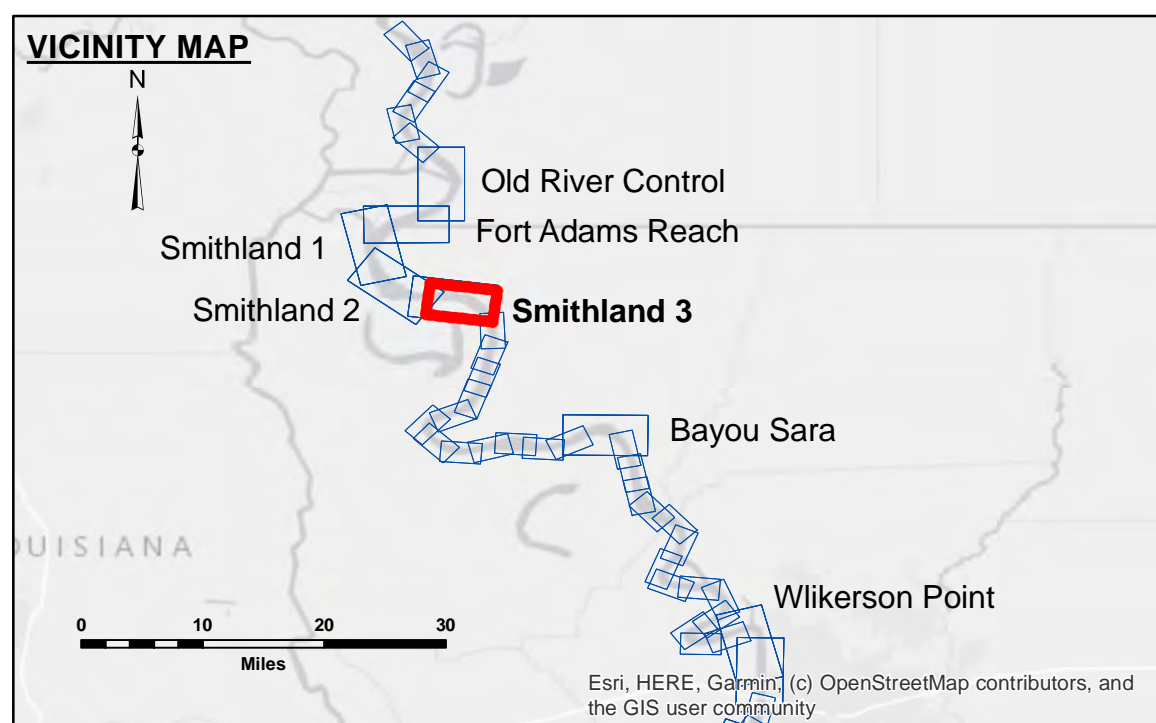
DISCLAIMER: The data represents the results of data collection/processing for a specific US Army Corps of Engineers project. It is only valid for its intended use, control, time and accuracy specifications. The user is responsible for the results and any errors. The application of the data for other than its intended purpose. Data Collection Hydrographic survey data is subject to change rapidly due to several factors including but not limited to changing hydrographic conditions which develop after the date of the survey. US Army Corps of Engineers accepts no responsibility for changes in the hydrographic conditions when used after the date of the survey. The information depicted on this map represents the results of a survey and should not be considered as a guarantee of accuracy. The Corps of Engineers is not responsible for the general condition existing at that time.

Distribution Liability: The data represents the results of data collection/processing for a specific US Army Corps of Engineers project. It is only valid for its intended use, control, time and accuracy specifications. The user is responsible for the results and any errors. The application of the data for other than its intended purpose. Data Collection Hydrographic survey data is subject to change rapidly due to several factors including but not limited to changing hydrographic conditions which develop after the date of the survey. US Army Corps of Engineers accepts no responsibility for changes in the hydrographic conditions when used after the date of the survey. The information depicted on this map represents the results of a survey and should not be considered as a guarantee of accuracy. The Corps of Engineers is not responsible for the general condition existing at that time.

Submitted:	Surveyed By: RYLAND/SIMMONS
Recommender:	Plotted By: BD
Approved:	Checked By: ADU/JH

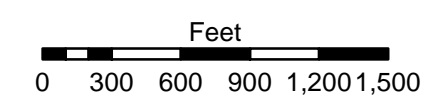
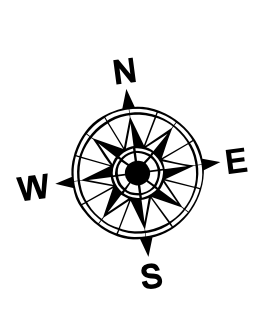
U.S. ARMY CORPS OF ENGINEERS
NEW ORLEANS DISTRICT

**MISSISSIPPI RIVER - SHALLOW DRAFT
SMITHLAND - SHEET 3**
MS_11_SM3X_20230213_CS
13 February 2023



LEGEND

--- Federal Navigation Channel	● Cable Area	■ Shoaling Area	■ 0' and above
— Federal Navigation Center Line	□ Placement Area	● Shoalest Sounding**	■ 0' to -5'
— As-built Pipeline/Cable	⊗ Anchorage Area	★ Beacon, General	■ -5' to -9'
..... Unconfirmed Pipeline/Cable	⊗ Obstruction Point	◆ Red Navigation Buoy	■ -9' and below
— Project Depth Contour	⊗ Wrecks-Submerged	◆ Green Navigation Buoy	



LWRP: 11.8
Gage Reading: RR:42.0 BR:25.5 USED:40.30 NAVD
Sea Conditions: CHOPPY
Vessel Name: OB-189
Survey Type: CS
Sounding Frequency***: HIGH

NOTES:
Horizontal Coordinate System: North American Datum of 1983 (NAD83), projected to the State Plane Coordinate System (SPCS), Louisiana South Zone. Distance units in U.S. Survey Feet.
Vertical Datum: Soundings are shown in feet and indicate depths below Low Water Reference Plane 2007 (NAVD).
Distances on the Mississippi River, above and below Head of Passes are shown at 1 mile intervals.
The location of navigation aids are based on and provided by the U.S. Coast Guard and USACE crew.
2015 Aerial Photography data source: NAIP, USDA-FSA-APFO Aerial Photography Field Office.
Reference is USACE IENC U35LM236.
** Shoalest Sounding per Quarter per Reach.
*** High frequency (200 kHz) survey data represents the first signal return at a sounding location and will include suspended solids, known as "fluff", if present. Low frequency (20 kHz) survey data normally penetrates through this "fluff" layer to depict elevations of consolidated bottom material. Low frequency accuracies may vary depending on channel conditions and fathometer settings.

Sheet Reference Number
11 of 39