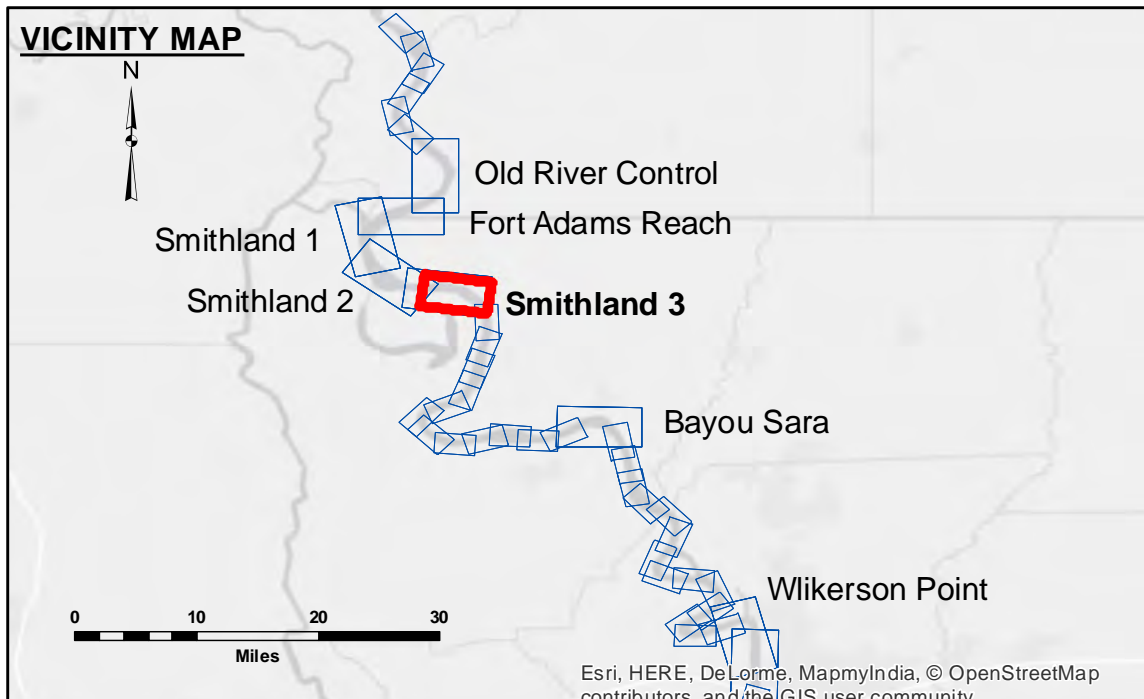
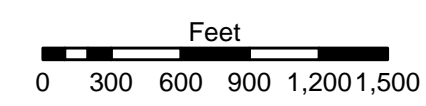
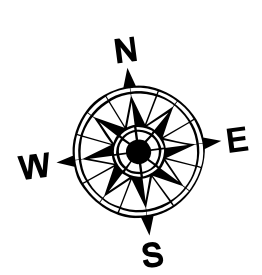


DISCLAIMER: The United States Government furnishes these data and the recipient accepts and uses them with the express understanding that the data are provided for informational purposes only and are not to be used for any purpose other than that intended. The user is responsible for the results of their use. The application of the data for other than its intended purpose may be hazardous to life or property. Data furnished by the United States Government are subject to change without notice and are not to be used for any purpose other than that intended. The information depicted on this map represents the results of a survey conducted on the ground and is not to be used for any purpose other than that intended. The information is provided as a reference only and is not to be used for any purpose other than that intended.

U.S. ARMY CORPS OF ENGINEERS NEW ORLEANS DISTRICT	
Submitted:	Surveyed By: DR, PS
Recommended: Chief, Survey Section	Plotted By: BTJ
Approved: Chief, Waterways Maintenance Section	Checked By: HL



LEGEND	
--- Federal Navigation Channel	● Cable Area
— Federal Navigation Center Line	□ Placement Area
— As-built Pipeline/Cable	⊠ Anchorage Area
..... Unconfirmed Pipeline/Cable	⊠ Obstruction Point
— Project Depth Contour	★ Wrecks-Submerged
■ Shoaling Area	★ Beacon, General
● Shoalest Sounding**	◆ Red Navigation Buoy
★ Green Navigation Buoy	
■ 0' and above	
■ 0' to -5'	
■ -5' to -9'	
■ -9' and below	



LWRP: 12.6
 Gage Reading: RR:43.4 BR:27.4 USED:41.80 NGVD
 Sea Conditions: CALM
 Vessel Name: M/V OB 189
 Survey Type: CONDITION
 Sounding Frequency***: HIGH

NOTES:
 Horizontal Coordinate System: North American Datum of 1983 (NAD83), projected to the State Plane Coordinate System (SPCS), Louisiana South Zone. Distance units in U.S. Survey Feet.
 Vertical Datum: Soundings are shown in feet and indicate depths below Low Water Reference Plane 2007 (NGVD).
 Distances on the Mississippi River, above and below Head of Passes are shown at 1 mile intervals.
 The location of navigation aids are base on and provided by the U.S. Coast Guard and USACE crew.
 2010 Aerial Photography data source: NAIP, USDA-FSA-APFO Aerial Photography Field Office.
 Reference is USACE IENC U35LM236.
 *** Shoalest Sounding per Quarter per Reach.
 **** High frequency (200 kHz) survey data represents the first signal return at a sounding location and will include suspended solids, known as "fluff", if present. Low frequency (20 kHz) survey data normally penetrates through this "fluff" layer to depict elevations of consolidated bottom material. Low frequency accuracies may vary depending on channel conditions and bathymeter settings.

**MISSISSIPPI RIVER - SHALLOW DRAFT
 SMITHLAND - SHEET 3
 MS_11_SM3_20150518
 18 May 2015**

**Sheet Reference Number
 11 of 39**